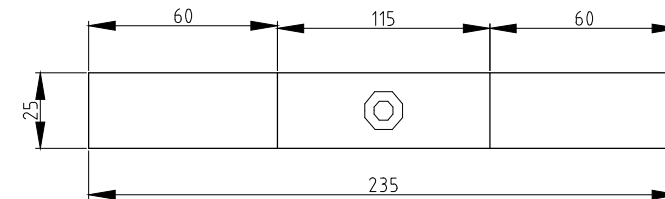
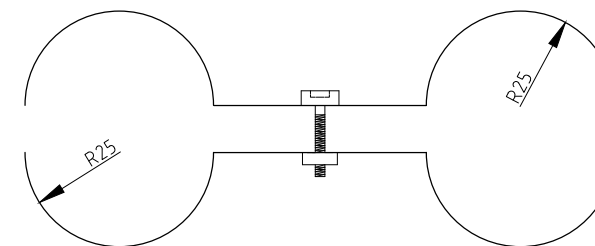


INSTALLATION DETAILS

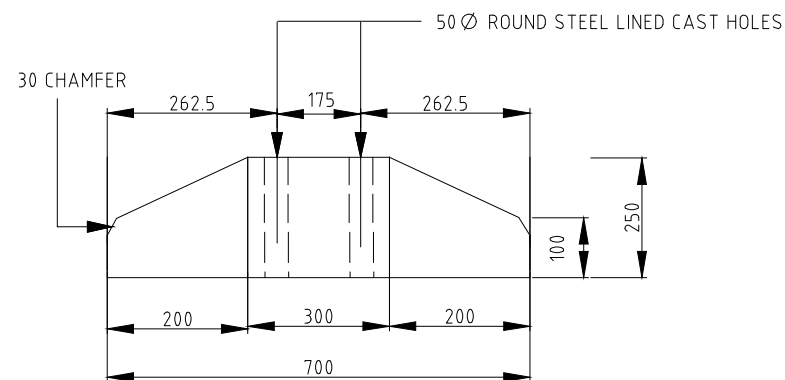


SIDE ELEVATION

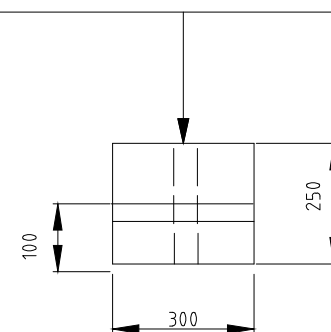


PLAN

CONNECTING BRACKET DETAILS

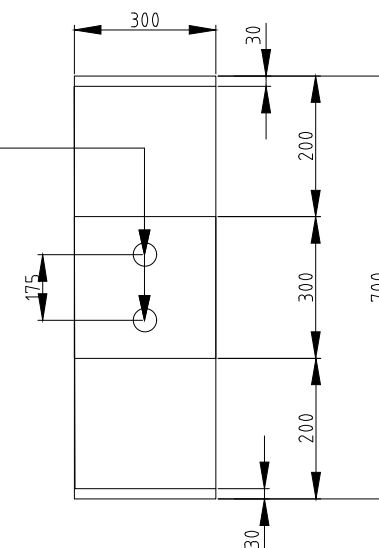


SIDE ELEVATION



END ELEVATION

CONCRETE FOOT-STAND DETAILS



PLAN

NOTES:

1. INSERT PANEL TO BE SQUARE WELDED, HOT-DIPPED GALVANIZED STEEL WIRE-MESH 50x50x3 mm.
2. INSERT-PANEL TO BE SECURELY WELDED TO THE STEEL FRAME.
3. STEEL FRAME TO BE HOT-DIPPED GALVANIZED PIPE 40mm DIAMETER AND 3.6mm WALL THICKNESS.
4. STEEL FRAME TO BE SECURELY WELDED ON ALL SIDES AND TREATED WITH GALVANIZED PAINT.
5. SHADE CLOTH IS TO BE DARK GREEN HEAVY DUTY 80% MONO-FILAMENT WITH 306 gsm (GRAMS PER SQUARE METER).
6. SHADE CLOTHE IS TO BE SECURELY ATTACHED TO THE WELDED MESH INSERT PANEL WITH CABLE TIES.
7. FLASHING LAMPS OR BEACONS MAY BE ATTACHED TO THE WELDED MESH INSERT PANEL AS REQUIRED AND SHOULD BE INSTALLED AT APPROXIMATELY 1m FROM THE ROAD SURFACE.
8. CONCRETE FOOT-STAND TO HAVE COMPRESSIVE STRENGTH OF 40 N/mm² (C-40).
9. ON HIGH-SPEED ROADS, 80 km/h AND ABOVE , THE GROUND-MOUNTED WORK-ZONE SCREEN MUST BE INSTALLED BEHIND THE CONCRETE BARRIER.
10. SCREEN MUST BE INSTALLED WITH CONNECTING BRACKET SHOWN.
11. DIAGRAMS ARE NOT TO SCALE.
12. ALL DIMENSIONS QUOTED ARE IN MILLIMETERS.

0	15SEP13	ISSUED FOR USE	
Rev.	Date	Revision Details	Appd.

هيئة الأشغال العامة
Public Works Authority

P.O.Box 22188
Tel. : (0974) 44950000
Fax. : (0974) 44950999
www.ashghal.gov.qa

قطر تستحق الأفضل
Qatar Deserves The Best

PA
PROJECTS AFFAIRS

QCS Section:
Section 1 - General
Part 14 - Temporary Works

Drawing Title:
**TEMPORARY GROUND
MOUNTED WORK-ZONE
SCREENS**

Approved:	Sheet No:	1 OF 2
Date:	SEPTEMBER 2013	Scale: N.T.S.
Drawing Number:	SD 1-14-201	Revision: 0