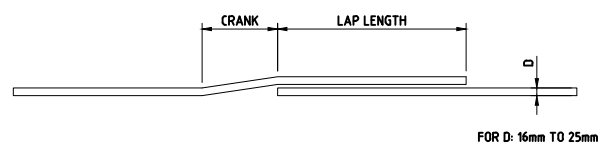


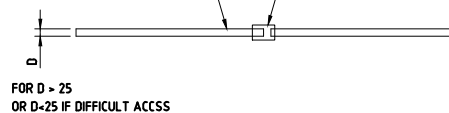
* END DIAPHRAGM DETAIL SHOWN AT 800mm. DIAPHRAGM WIDTH IS TO SUIT DESIGN REQUIREMENTS, MINIMUM WIDTH 500mm. (IF 800mm DIMENSION SIZE IS ALTERED, OTHER DIMENSIONS MAY CHANGE).

5 No. HOLES SHALL BE PROVIDED FOR DIAPHRAGMS 800mm WIDE. (IF THIS DIMENSION/SIZE IS ALTERED THEN THE NUMBER OF HOLES WILL BE CHANGED)

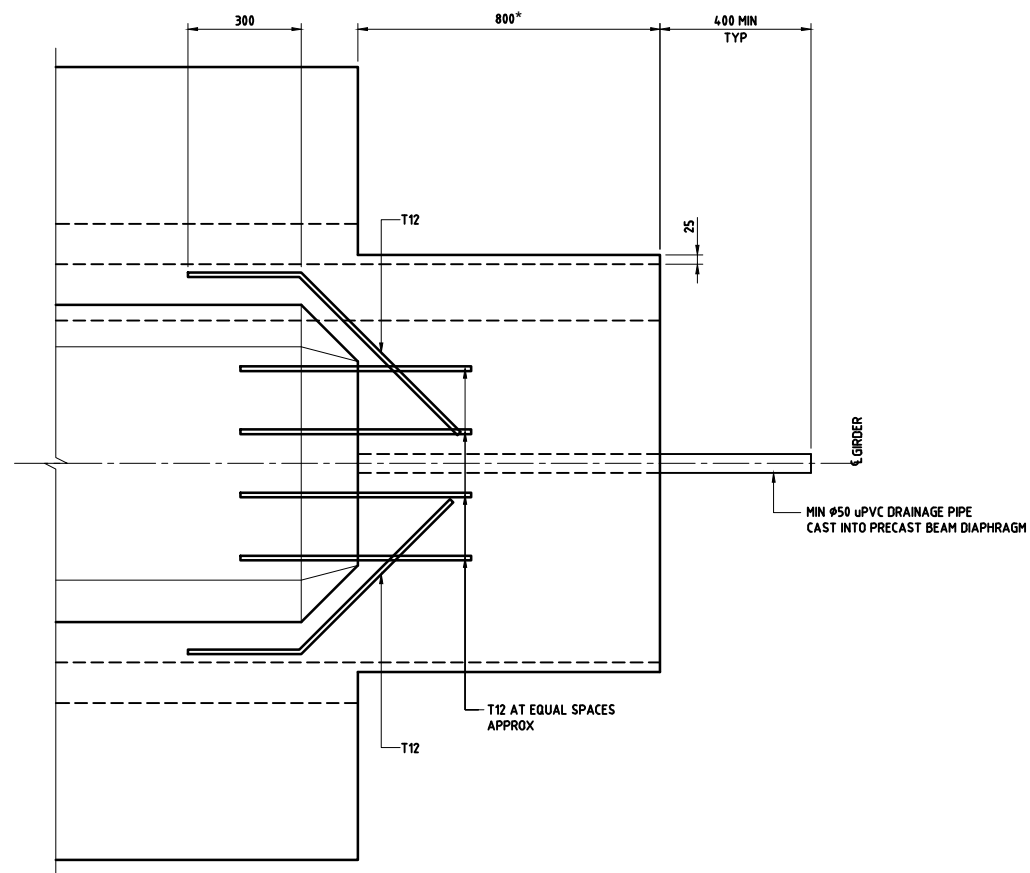


BARS SHALL BE THREADED TO SUIT SIZE OF COUPLER IN ACCORDANCE WITH COUPLER MANUFACTURER'S SPECIFICATION

STANDARD THREADED MECHANICAL COUPLER USED SHALL DEVELOP THE NOMINAL ULTIMATE TENSILE OR COMPRESSIVE STRENGTH OF THE BARS AS A MINIMUM REQUIREMENT



BOTTOM FLANGE REINFORCING BAR SPLICE DETAIL
SCALE 1:10 (TYPICAL FOR ALL SECTIONS)



NOTES:

1. ALL DIMENSIONS ARE IN MILLIMETRES UNLESS OTHERWISE STATED.
2. MINIMUM COVER TO BE 50mm UNLESS OTHERWISE SHOWN.
3. REINFORCEMENT TO BE DEFORMED ROUND STEEL BARS TYPE 2 GRADE 500 COMPLYING WITH REQUIREMENTS OF BS 4449 AND CUT AND BENT IN ACCORDANCE WITH BS 8666.
4. REINFORCEMENT SHOWN IS INDICATIVE. DESIGN DRAWINGS SHALL BE PREPARED AND DESIGNERS SHALL PROVIDE THE BAR DIAMETERS REQUIRED BY THE DESIGN.

Rev.	Date	Revision Details	Appd.
1	23/10/2013	REVISED LOGO AND DWG NUMBER	I. FLYNN

هيئة الأشغال العامة
Public Works Authority

P.O.Box 22188
Tel. : (0874) 44950000
Fax. : (0874) 44950999
www.ashghal.gov.qa

قطر يستحق الأفضل
Qatar Deserves The Best

PA
PROJECTS AFFAIRS

QCS Section: 5 (CONCRETE)
PART 1 (GENERAL)

Drawing Title:
OPEN FLANGE Q-GIRDER
END DIAPHRAGM
REINFORCEMENT
SHEET 1

Approved: I. FLYNN	Sheet No: 1 OF 1
Date: OCTOBER 2013	Scale: AS SHOWN @ A1
Drawing Number: SD 5-1-104	Revision: 1