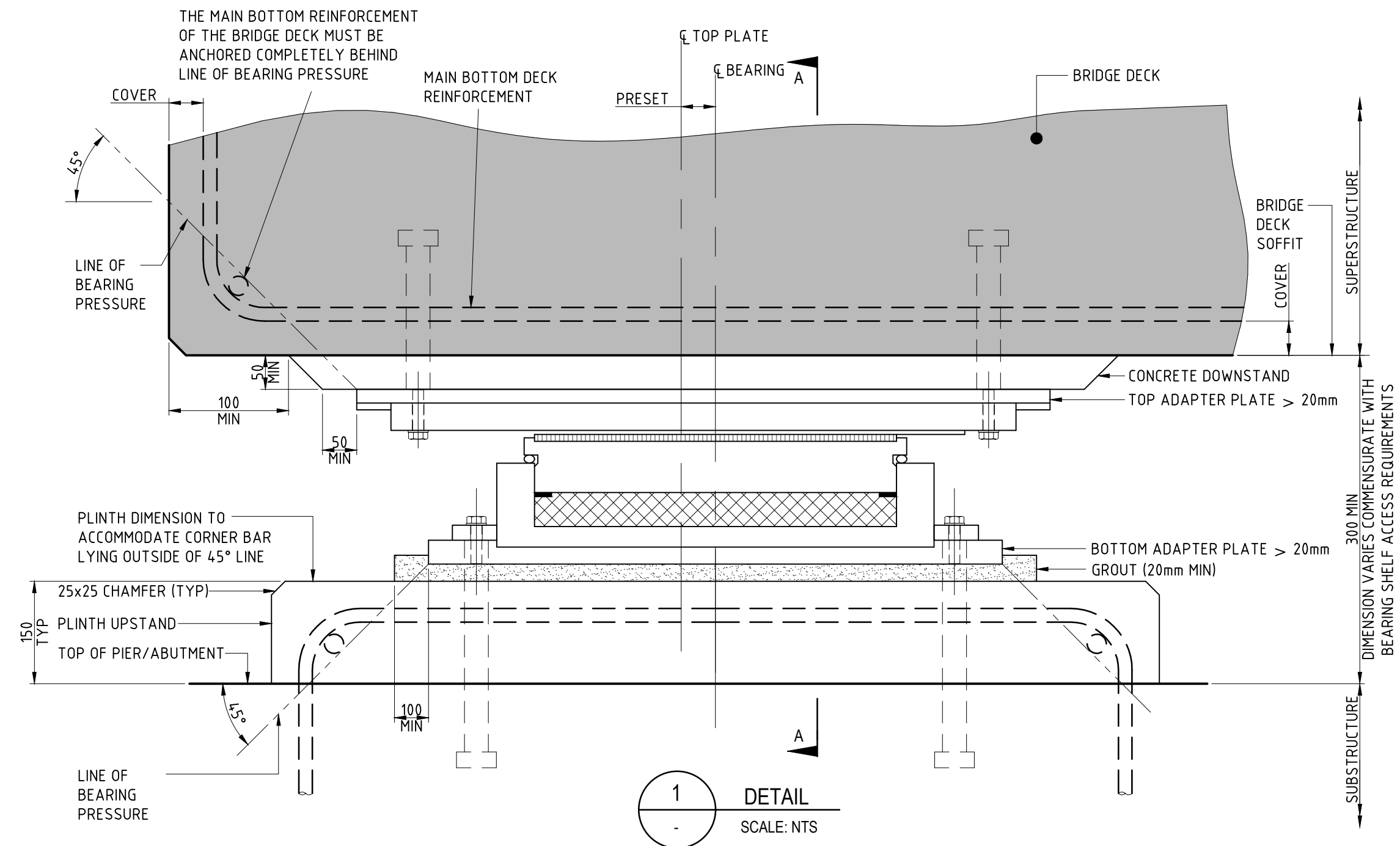


NOTE:  
THE BEARINGS SHOULD BE INSTALLED IN ACCORDANCE WITH THE SPECIFICATIONS OF THE BEARING INSTALLATION PLAN SHOWN IN SHOP DRAWINGS (DIMENSIONS, INSTALLATION LEVELS AND POSITIONS, DISPLACEMENT ORIENTATION, INCLINATIONS, LATERAL AND LONGITUDINAL POSITION, MATERIAL QUALITY OF THE BEARING JOINT, PRE-SETTING). GRADUATES SCALES OF IAN 006 SHALL INCLUDE THE INDICATIONS SHOWN IN THE SKETCH AS A MINIMUM.

GRADUATED SCALE SKETCH  
SCALE: NTS



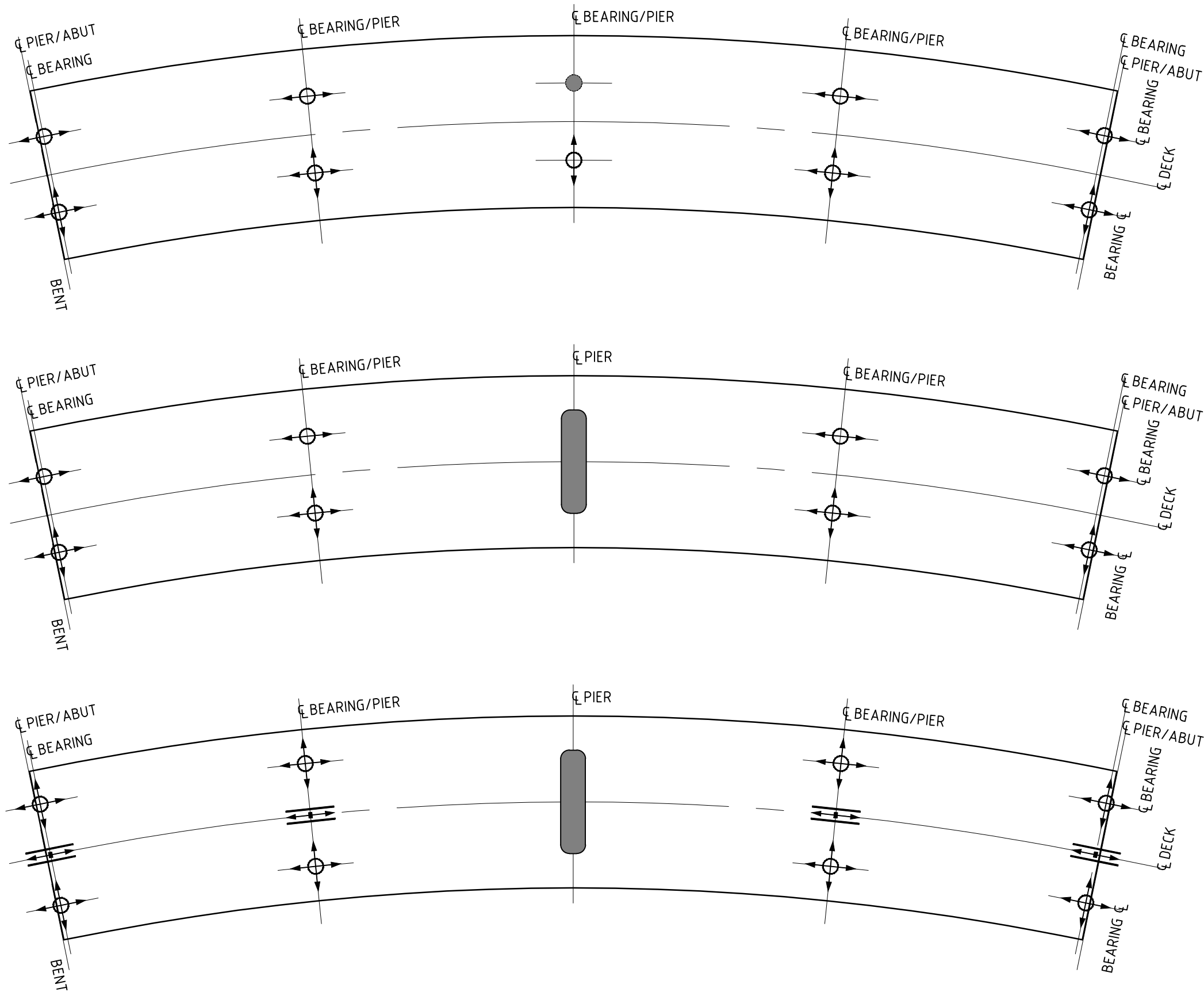
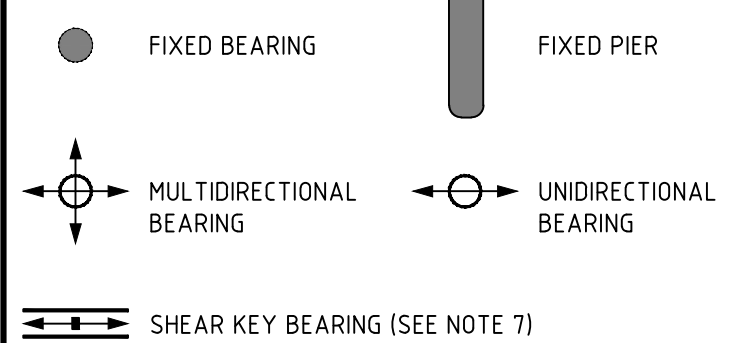
#### USE OF STANDARD DETAILS:

1. THIS DRAWING SHOWS STANDARD DETAILS WHICH ARE INDICATIVE OF THE BASIC PRINCIPLES WHICH ARE PREFERRED BY ASHGHAL.
2. THE STANDARD DETAILS ARE GENERIC IN NATURE AND MUST BE FURTHER DEVELOPED BY THE DESIGNER AS NECESSARY TO SUIT THE PARTICULAR APPLICATION.
3. WHERE THESE STANDARD DETAILS ARE ADOPTED AS THE BASIS OF ANY DETAIL INCLUDED IN A DESIGN, THE DESIGNER SHALL BE ENTIRELY RESPONSIBLE FOR THE COMPLETED DETAIL AND ALL ASSOCIATED LIABILITY. DESIGNERS MUST THEREFORE SATISFY THEMSELVES AS TO THE SUITABILITY OF THE STANDARD DETAIL FOR THE PROPOSED APPLICATION.
4. DESIGNERS SHALL ADOPT THE STANDARD DETAILS SHOWN AS THE BASIS OF THEIR DESIGN UNLESS THEY CONSIDER THAT A DETAIL IS UNSUITABLE AND AGREE WITH ASHGHAL THAT IT SHALL NOT BE USED.
5. THIS DRAWING SHALL BE USED IN CONJUNCTION WITH ALL APPLICABLE ASHGHAL DESIGN INSTRUCTIONS, CIRCULARS, ADVICE NOTES ETC.
6. DESIGNERS SHALL REFER ANY DISCREPANCIES OR CONTRADICTIONS BETWEEN THIS DRAWING AND OTHER APPLICABLE ASHGHAL DESIGN INSTRUCTIONS, CIRCULARS, ADVICE NOTES ETC. TO ASHGHAL FOR DIRECTION.

#### NOTES:

1. THIS DRAWING INDICATES THE PRINCIPLES OF BEARING / STRUCTURE INTERFACES, LOCATION AND ORIENTATION OF BEARINGS.
2. THE DETAILS SHOWN ARE BASED ON POT BEARINGS, HOWEVER SIMILAR PRINCIPLES SHALL BE ADOPTED AS APPROPRIATE FOR OTHER TYPES OF BEARINGS.
3. THE DETAILS ARE SHOWN FOR A CONCRETE STRUCTURE, HOWEVER SIMILAR PRINCIPLES SHALL BE ADOPTED AS APPROPRIATE FOR STRUCTURES CONSTRUCTED FROM OTHER MATERIALS.
4. DETAILS ARE SHOWN FOR A PIER SUPPORT AT AN INTERMEDIATE EXPANSION JOINT, HOWEVER SIMILAR PRINCIPLES SHALL BE ADOPTED AS APPROPRIATE AT OTHER BEARING LOCATIONS.
5. ALL BEARING PRODUCTS AND ASSOCIATED COMPONENTS SHALL BE INSTALLED STRICTLY IN ACCORDANCE WITH THE MANUFACTURERS INSTRUCTIONS AND IAN006.
6. ALL DIMENSIONS ARE IN MILLIMETRES UNLESS OTHERWISE STATED.
7. THE SHEAR KEY BEARING AS PER BS EN 1337-8 IS DESIGNED TO ACCOMMODATE HORIZONTAL MOVEMENT ALONG THE LONGITUDINAL AXIS OF THE DECK AND TRANSFER THE TRANSVERSE LOADS TO SUBSTRUCTURES. IT DOES NOT CARRY ANY VERTICAL LOAD. A SHEAR KEY BEARING SHALL BE USED TO ACCOMMODATE LARGE HORIZONTAL LOADS (E.G. SEISMIC) AND ALSO IN CASES WHERE IAN 006/14 Rev A2 CL.3.4.1.2 SLS CHECKS CANNOT BE SATISFIED.
8. THE BENEFICIAL EFFECT OF ELASTOMERIC BEARINGS (RECTANGULAR / CIRCULAR) FOR THE REDUCTION IN THE ACCELERATION TRANSMITTED TO THE SUPERSTRUCTURE SHALL BE UTILIZED WHERE APPROPRIATE, ALLOWING THEIR USE AS DYNAMIC ISOLATORS IN BRIDGES, FOR MODERATE VERTICAL LOADS (UP TO 12 MN), DISPLACEMENTS (UP TO +/- 250 MM), HORIZONTAL FORCES (UP TO 1 MN) AND ROTATION (UP TO 30 MRAD) FOR OPERATION TEMPERATURES OF 50 °C (PEAK 70 °C). GREAT CARE SHALL BE GIVEN TO THE SPECIFICATION OF THE RUBBER COMPOUND, THE SURFACE TREATMENT OF THE STEEL SHEETS, THE ASSEMBLY AND THE MOULDING.
9. FOR DETAILS ON GRADUATED SCALES, MEASURING PLANE, LOAD & SLIDING PATH MEASURING DEVICES, REFER TO IAN 006.

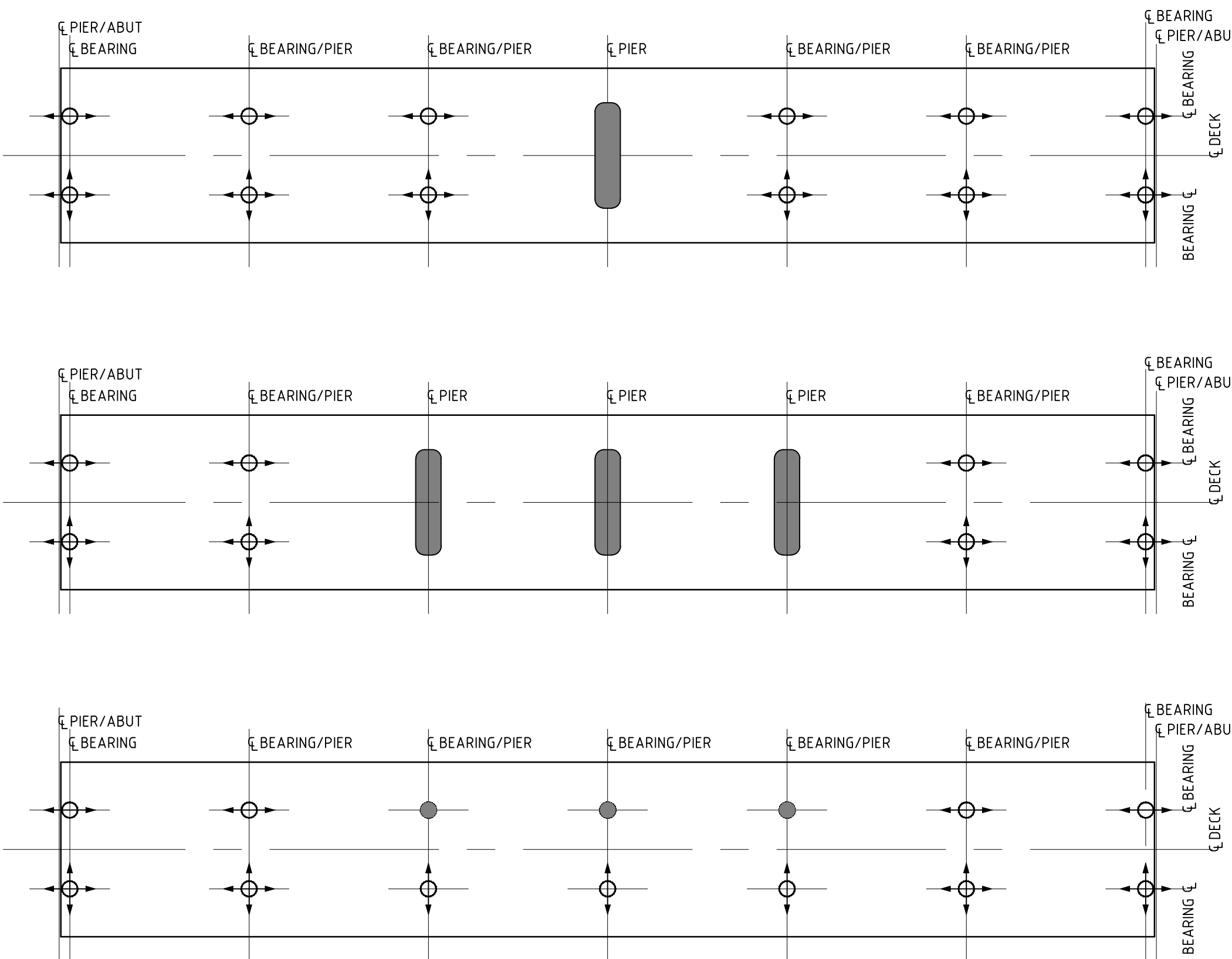
#### LEGEND:



CURVED DECK WITH MOVEMENT GUIDED TANGENTIALLY TO THE CURVE

NOTE:  
THIS PLAN SHOWS ONLY THE PREFERRED ORIENTATION OF BEARINGS. THE LAYOUT AND RELATIVE POSITIONS OF FIXED, GUIDED AND FREE BEARINGS IS INDICATIVE ONLY.

TYPICAL BEARING ORIENTATION PLAN  
NTS



STRAIGHT DECK WITH MOVEMENT GUIDED WITH LONGITUDINAL AXIS

Rev.	Date	Revision Details	Appd.
01	DEC 23	ISSUED FOR USE	
00	SEP 13	ISSUED FOR USE	

هيئة الأشغال العامة  
Public Works Authority

P.O.Box: 22188  
Tel.: 00974 44950000  
Fax: 00974 44950999

قطر تستحق الأفضل  
Qatar Deserves The Best  
www.ashghal.gov.qa

PROJECTS AFFAIRS  
QCS Section: 5 (CONCRETE)  
PART 1 (GENERAL)

Drawing Title:

BRIDGE BEARINGS

Author: F. ALKADOUR	Approved: T. TZAVEAS	Sheet No: 1 OF 1
Date: DECEMBER 2023	Scale: AS NOTED FOR A1	Revision: 1
Drawing Number: SD 5-1-401		