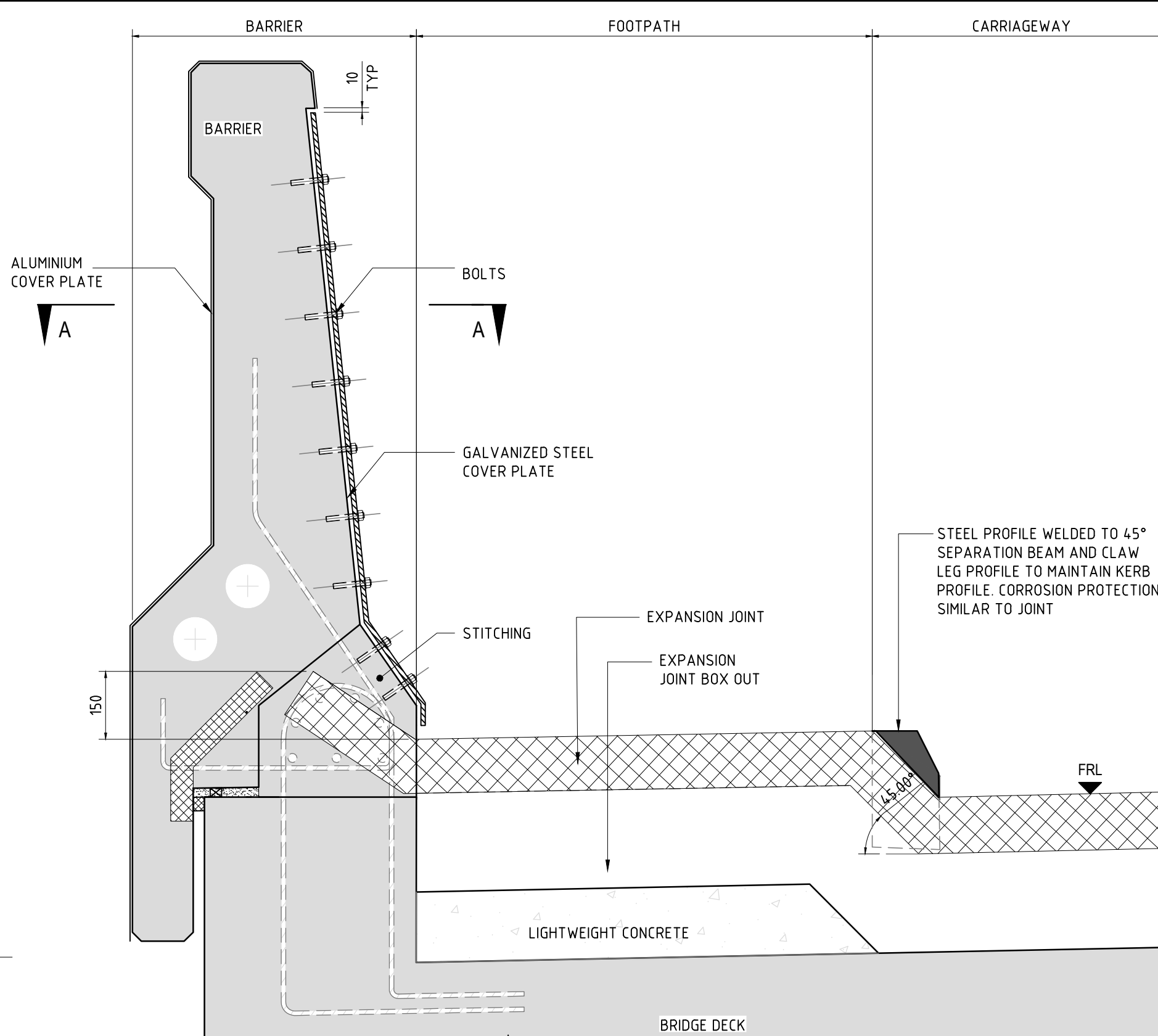
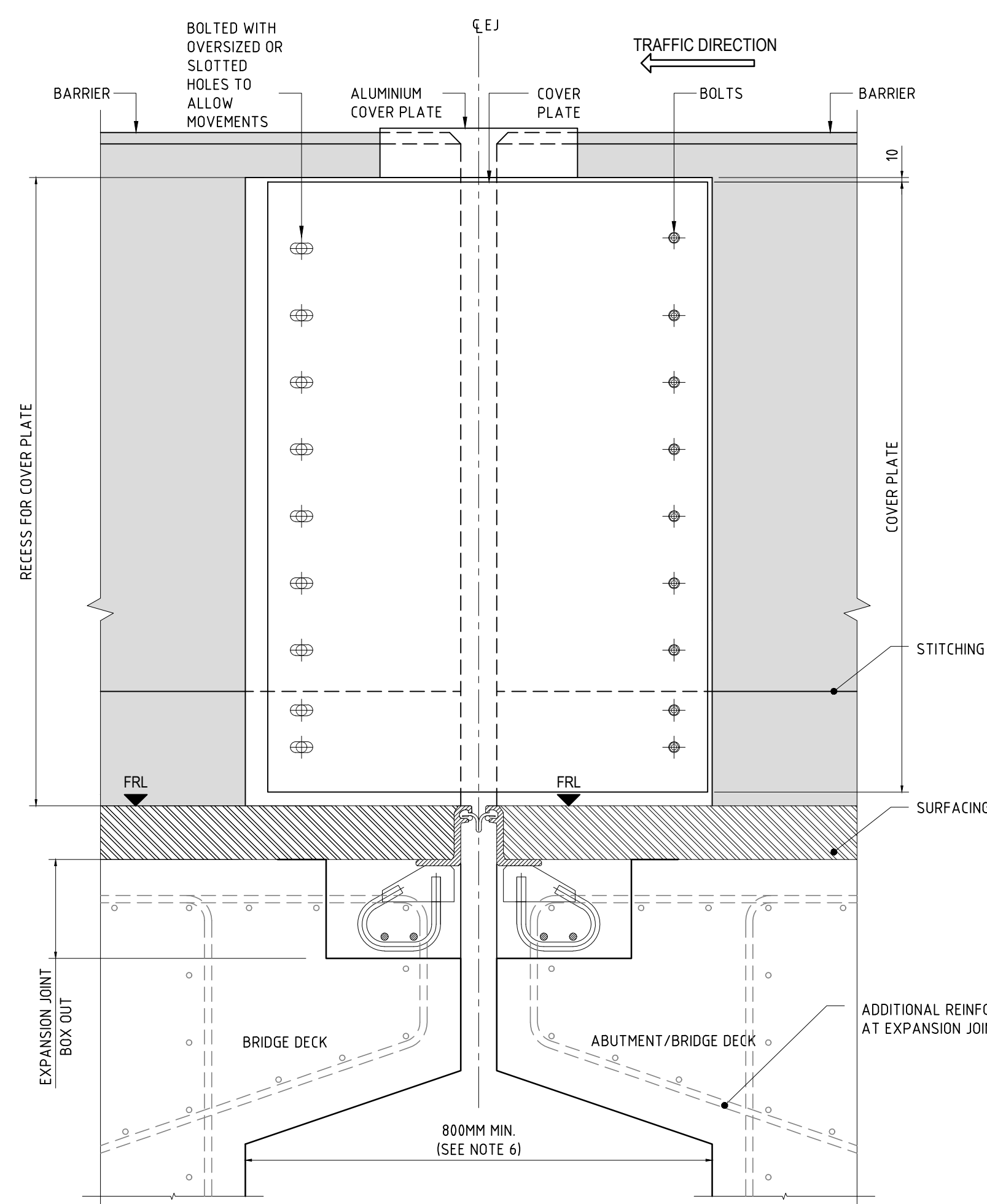


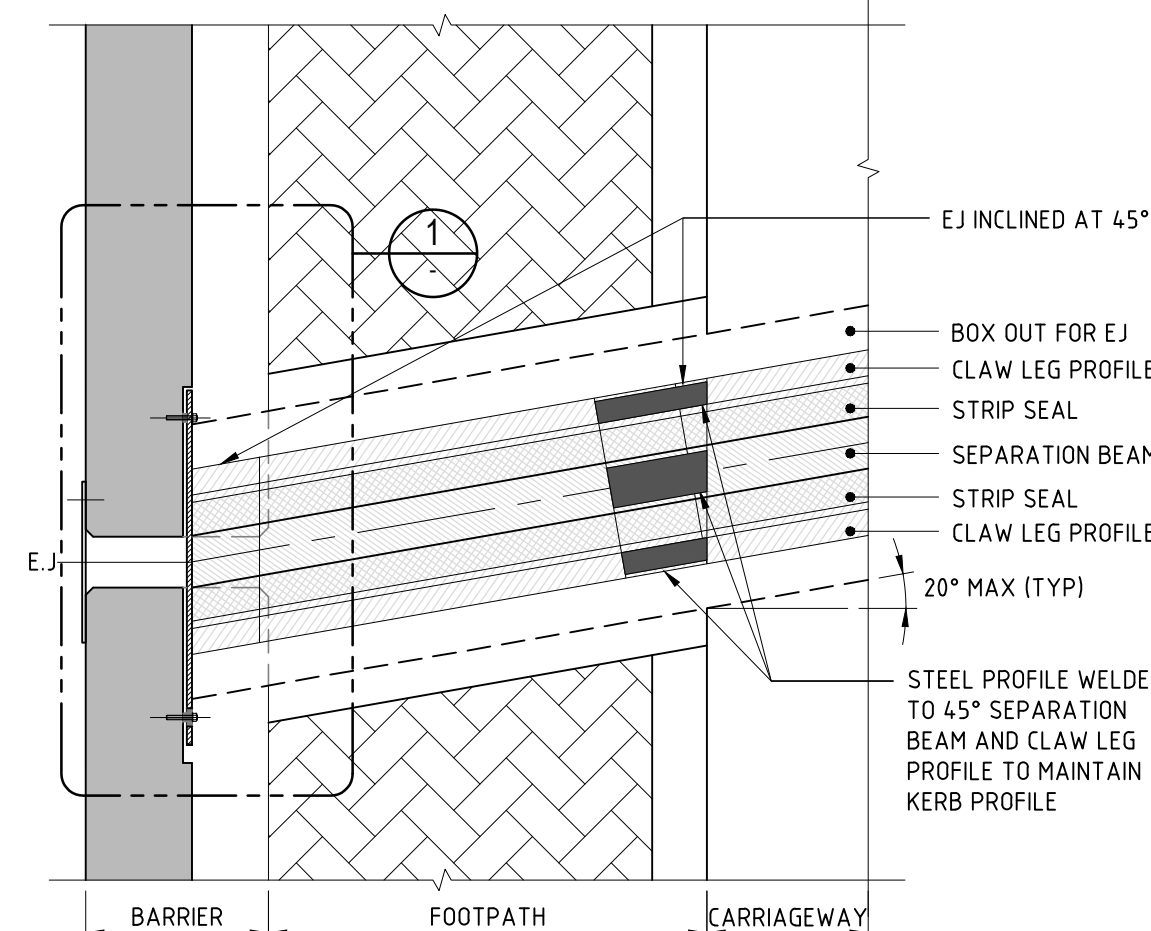
TYPICAL TRANSVERSE EXPANSION JOINT DETAIL ADJACENT TO CARRIAGEWAY



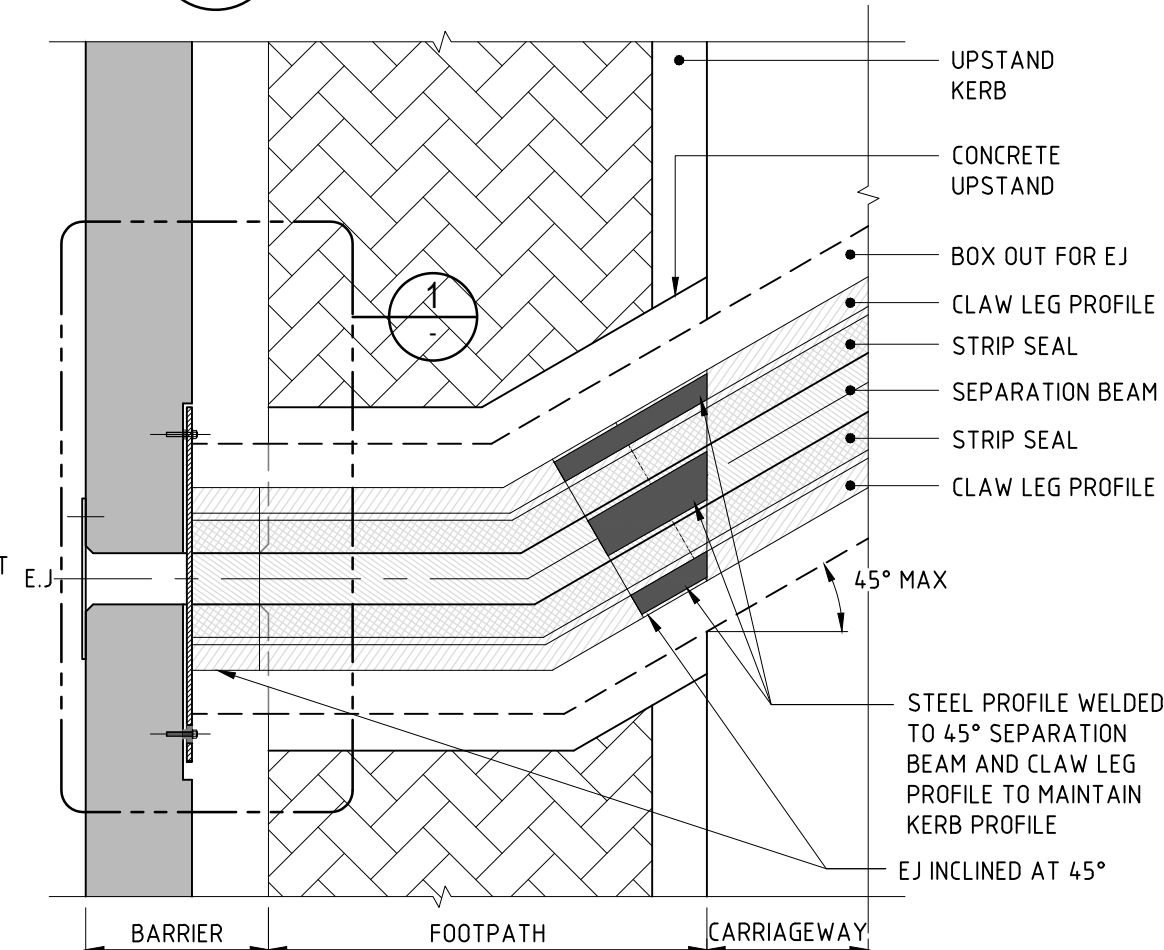
TYPICAL TRANSVERSE EXPANSION JOINT DETAIL ADJACENT TO WALKWAY



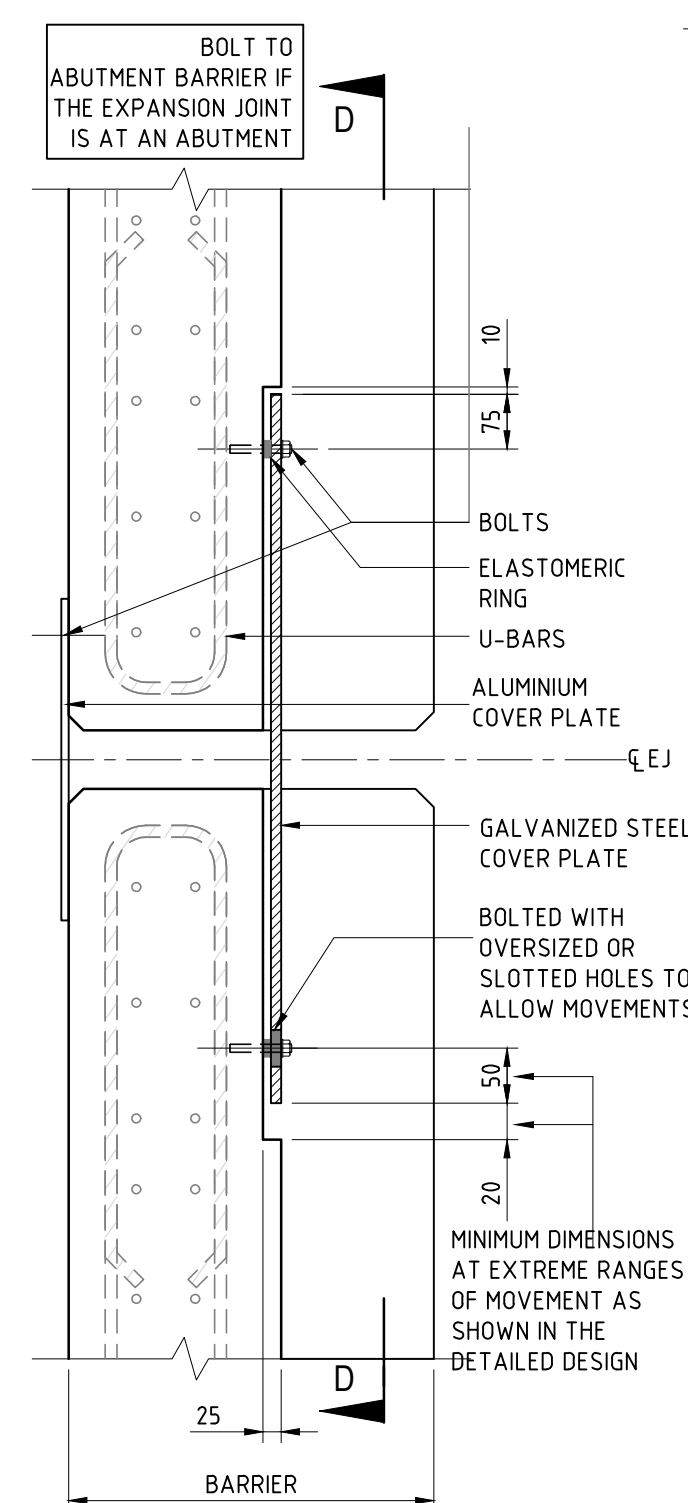
B ELEVATION



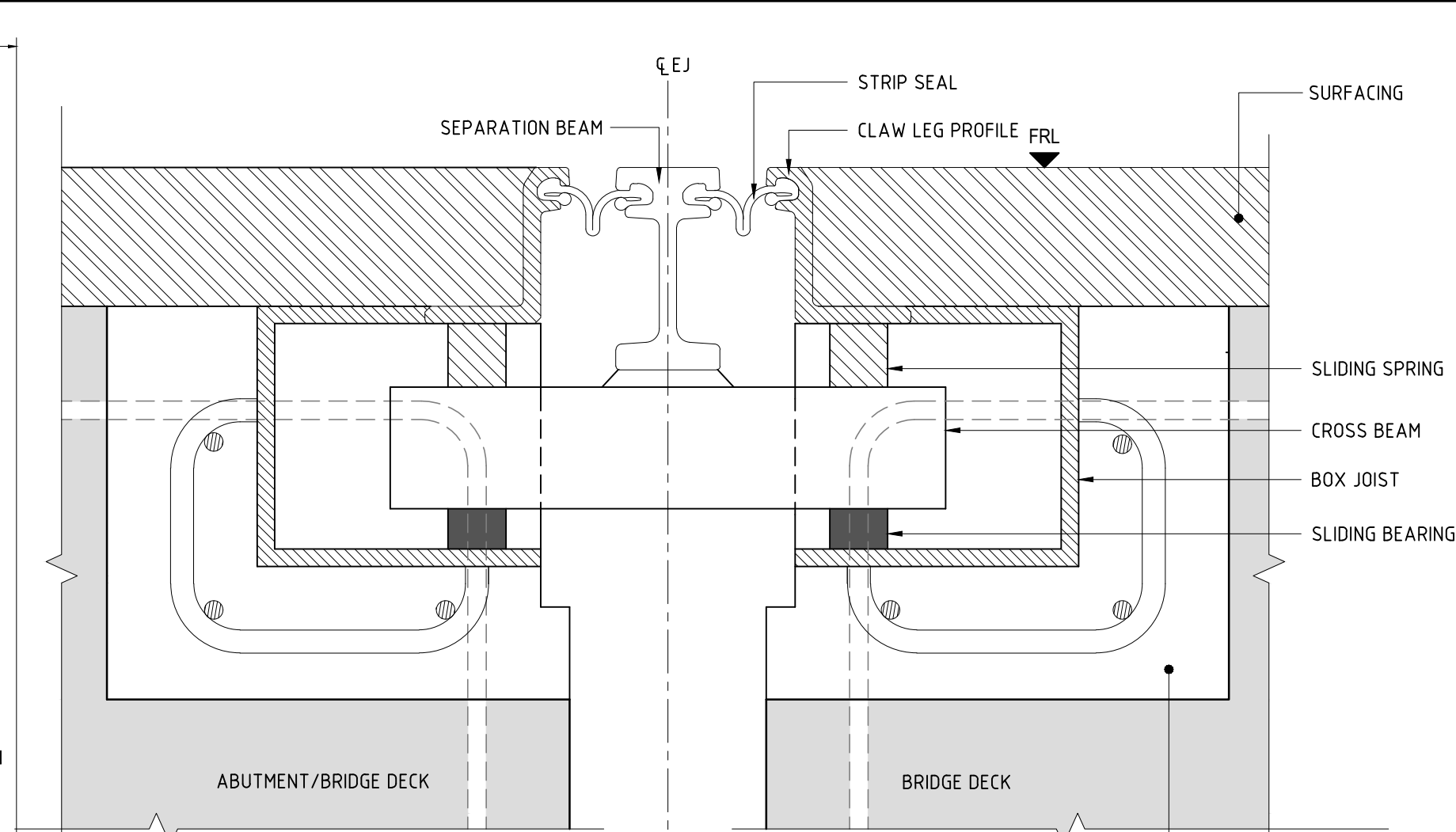
A SECTION (TYPICALLY FOR SKEW < 20°)



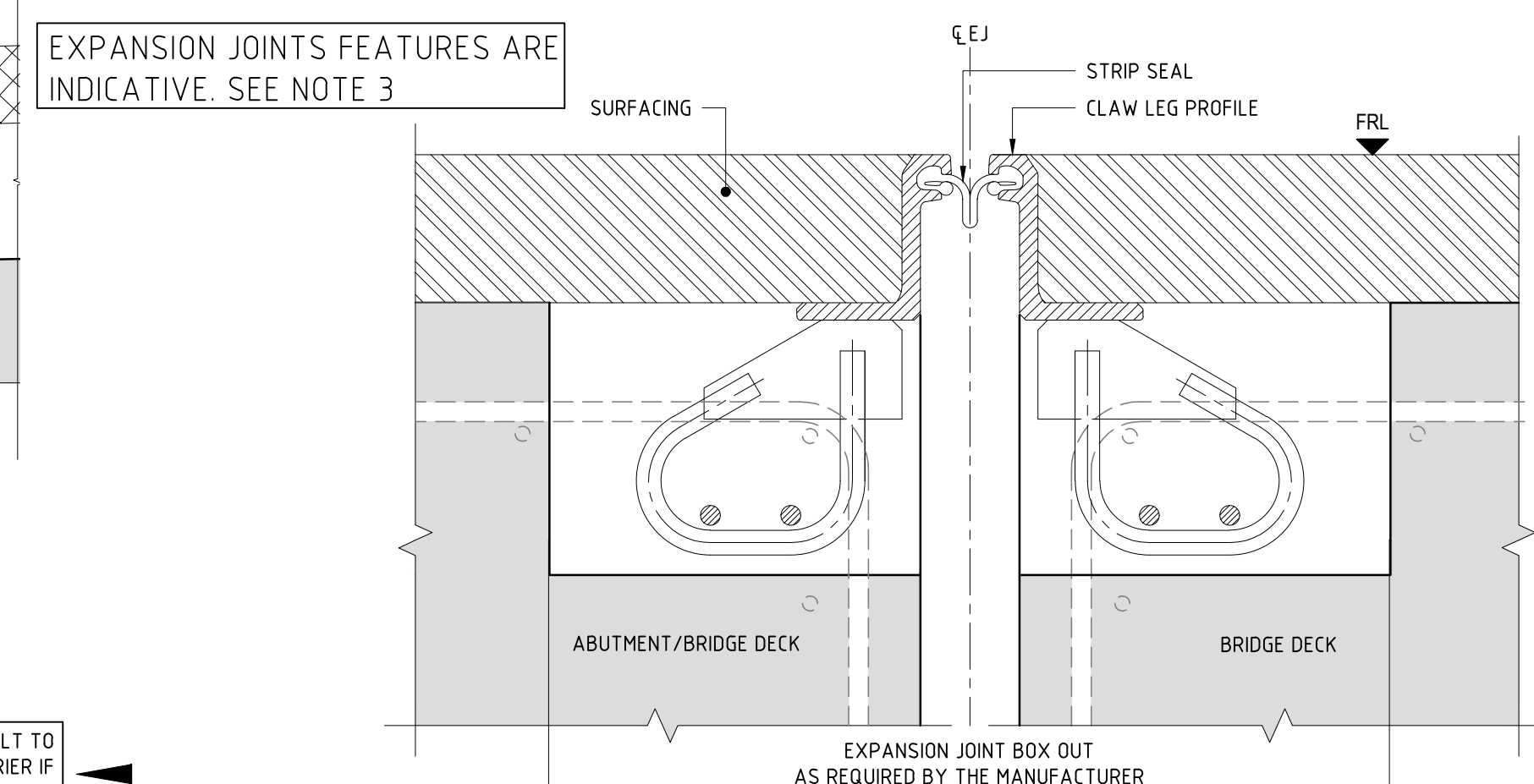
A SECTION (SKEW > 20° < 45°)



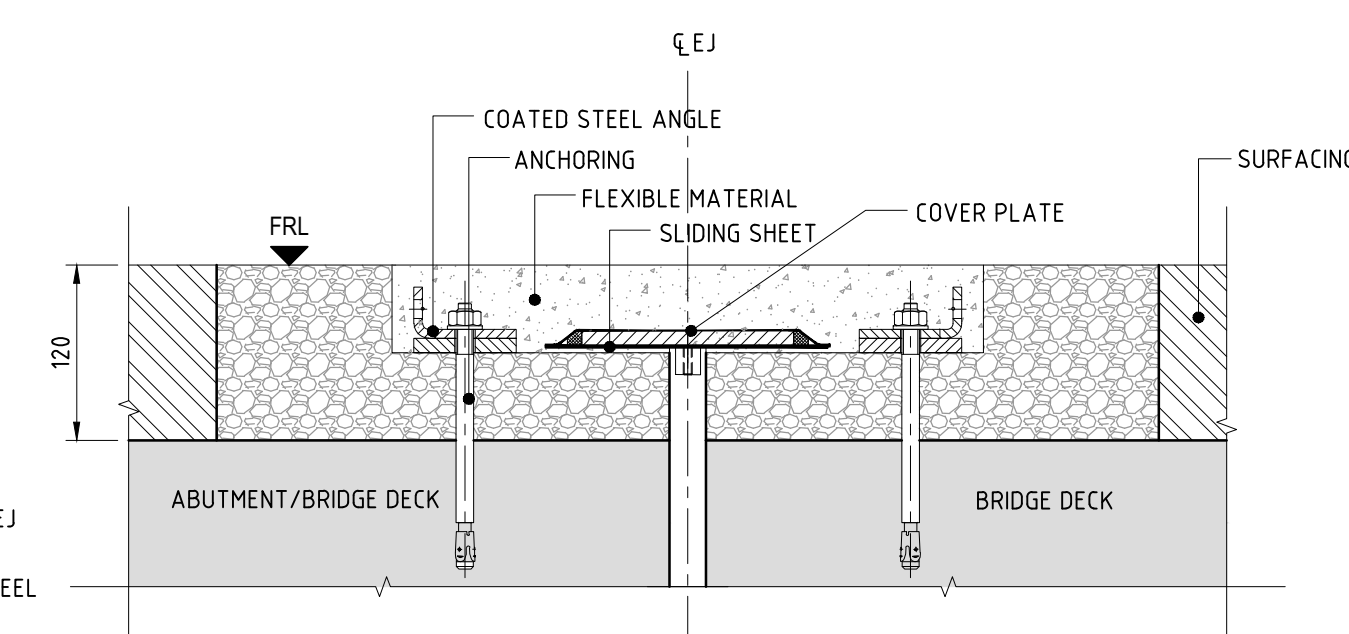
1 DETAIL



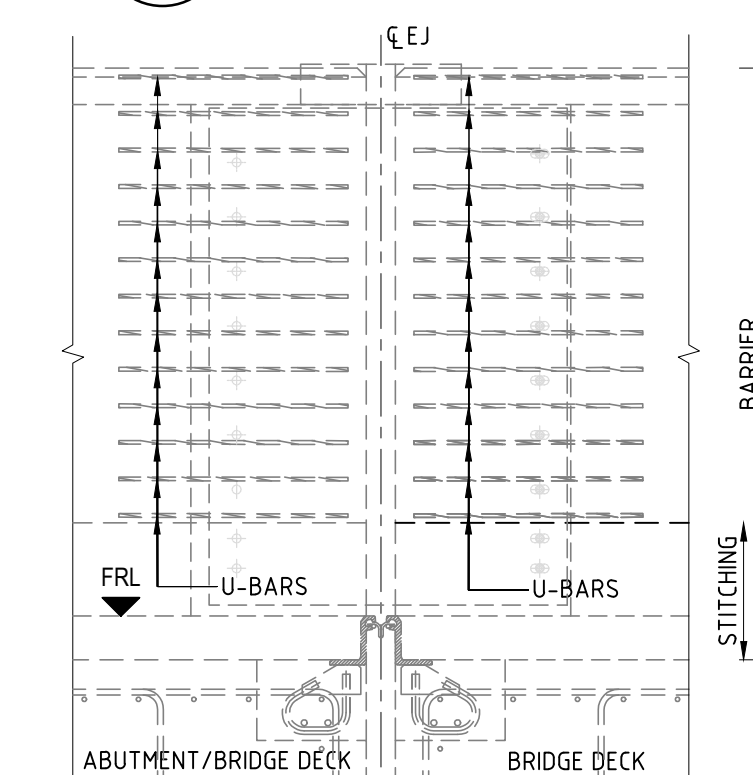
C SECTION - MODULAR



C SECTION - STRIP SEAL



C SECTION - FLEXIBLE PLUG



D ELEVATION - ADDITIONAL PARAPET REINFORCEMENT DETAILS IN THE AREAS OF EXPANSION JOINTS

#### USE OF STANDARD DETAILS:

- THIS DRAWING SHOWS STANDARD DETAILS WHICH ARE INDICATIVE OF THE BASIC PRINCIPLES WHICH ARE PREFERRED BY ASHGHAL.
- THE STANDARD DETAILS ARE GENERIC IN NATURE AND MUST BE FURTHER DEVELOPED BY THE DESIGNER AS NECESSARY TO SUIT THE PARTICULAR APPLICATION.
- WHERE THESE STANDARD DETAILS ARE ADOPTED AS THE BASIS OF ANY DETAIL INCLUDED IN A DESIGN, THE DESIGNER SHALL BE ENTIRELY RESPONSIBLE FOR THE COMPLETED DETAIL AND ALL ASSOCIATED LIABILITY. DESIGNERS MUST THEREFORE SATISFY THEMSELVES AS TO THE SUITABILITY OF THE STANDARD DETAIL FOR THE PROPOSED APPLICATION.
- DESIGNERS SHALL ADOPT THE STANDARD DETAILS SHOWN AS THE BASIS OF THEIR DESIGN UNLESS THEY CONSIDER THAT A DETAIL IS UNSUITABLE AND AGREE WITH ASHGHAL THAT IT SHALL NOT BE USED.
- THIS DRAWING SHALL BE USED IN CONJUNCTION WITH ALL APPLICABLE ASHGHAL STANDARD DETAILS, DESIGN INSTRUCTIONS, CIRCULARS, ADVICE NOTES ETC.
- DESIGNERS SHALL REFER ANY DISCREPANCIES OR CONTRADICTIONS BETWEEN THIS DRAWING AND OTHER APPLICABLE ASHGHAL STANDARD DETAILS, DESIGN INSTRUCTIONS, CIRCULARS, ADVICE NOTES ETC. TO ASHGHAL FOR DIRECTION.

#### NOTES:

- THE STANDARD DETAILS SHOWN ARE BASED ON THE PREFERRED EXPANSION JOINTS FORMS WITH AVAILABLE ETA AS PER JAN031. WHERE THE USE OF ALTERNATIVE FORMS OF JOINTS ARE NECESSARY, A VALID ETA SHALL BE DEMONSTRATED AND SIMILAR PRINCIPLES SHALL BE ADOPTED.
- MATERIALS/SYSTEMS/PRODUCTS SHALL BE OBTAINED FROM THE SAME MANUFACTURER WHEN AXES OF MOVEMENTS ARE JOINED, TO ENSURE COMPATIBILITY, VALIDITY OF WARRANTIES AND UNIFORMITY IN DESIGN/MAINTENANCE/OPERATION.
- SHAPES, PROPORTIONS AND FEATURES OF EXPANSION JOINTS SHOWN ARE INDICATIVE ONLY AND WILL VARY DEPENDING ON MANUFACTURER.
- DETAILS AT BARRIERS ARE SHOWN FOR CONCRETE BARRIERS. SIMILAR PRINCIPLES SHALL BE ADOPTED AS APPROPRIATE WHERE METAL PARAPETS ARE USED.
- BRIDGE PARAPETS SHALL COMPLY WITH QATAR HIGHWAY DESIGN MANUAL (QHDN 2020) VOLUME 3 PART 23 SECTION 6 AND IN PARTICULAR SUB-SECTIONS 6.8 & 6.12.
- AT INTERMEDIATE EXPANSION JOINT LOCATION (OVER PIERS), A MIN. 800MM GAP SHALL BE PROVIDED BETWEEN ENDS OF DIAPHRAGMS FOR INSPECTION.
- ALL DIMENSIONS ARE IN MILLIMETERS UNLESS NOTED OTHERWISE.

01	DEC 23	ISSUED FOR USE	
00	SEPT 13	ISSUED FOR USE	
Rev	Date	Revision Details	Appd.
هيئة الأشغال العامة Public Works Authority			
P.O.Box: 22188 Tel.: 00974 44950000 Fax: 00974 44950999 <b>PA</b> PROJECTS AFFAIRS			
QCS Section: 5 (CONCRETE) PART 1 (GENERAL)			
Drawing Title: <b>TRANSVERSE BRIDGE DECK          EXPANSION JOINTS</b>			
Author: C.ANAGNOSTAKI		Sheet No: 1 OF 1	
Approved: T.TZAVEAS		Scale: AS NOTED FOR A1	
Date: DECEMBER 2023		Revision: 1	
Drawing Number: SD 5-1-501			