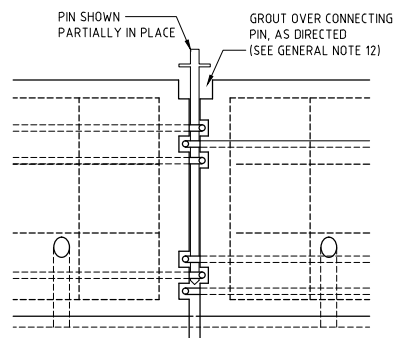
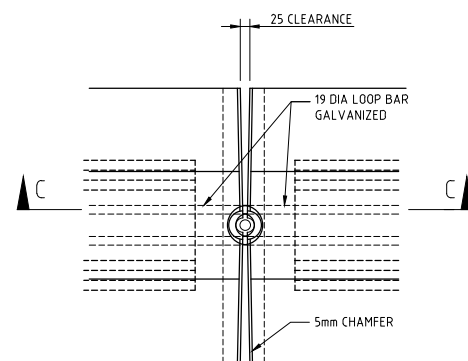


** DIMENSIONS MARKED THUS ARE TO THE INTERSECTION POINT OF THE BARRIER SLOPES. CONSTRUCT THE 250MM RADIUS TO PROVIDE A SMOOTH TRANSITION BETWEEN THE SLOPES.

50 DIA HOLES (WHEN REQUIRED) FINISH FLUSH WITH NON-SHRINKING GROUT, AS DIRECTED

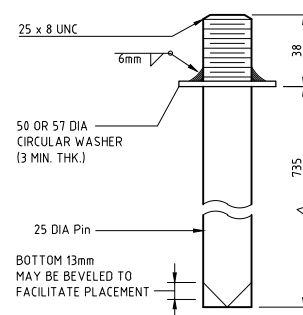


FOR DETAILS NOT SHOWN, SEE END VIEWS A-A AND B-B

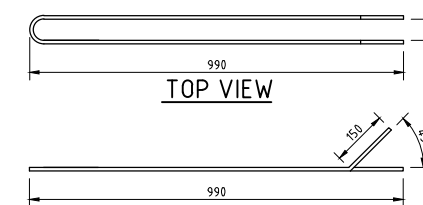
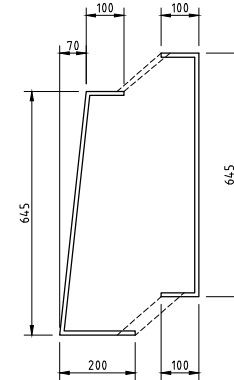
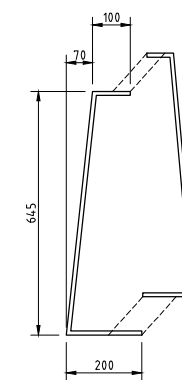
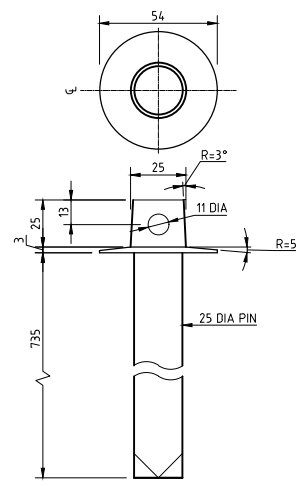


FOR DETAILS NOT SHOWN, SEE END VIEWS A-A AND B-B

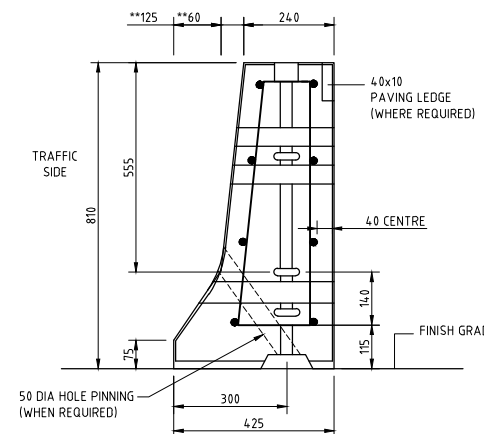
PIN NOTES:
x WASHER SHALL BE FORGED AS INTEGRAL PART OF PIN OR SHALL BE WELDED AS SHOWN.
x PINS SHALL BE GALVANIZED, CONFORM TO ASTM A449.



STANDARD BARRIER PIN

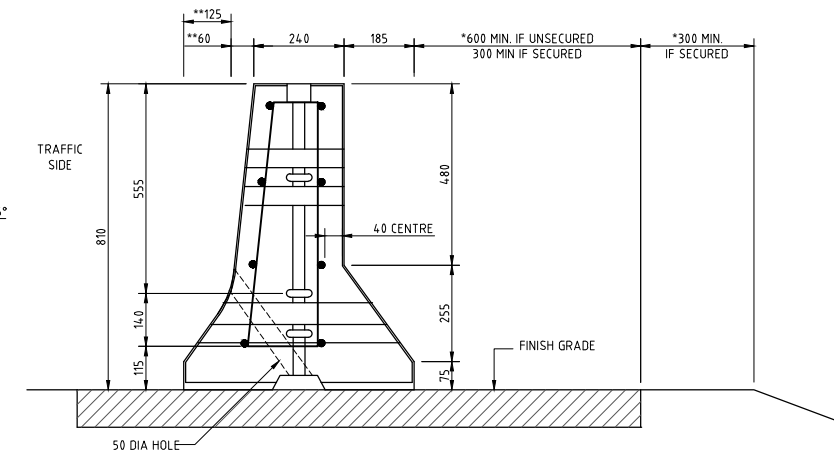


LOOP BAR DETAIL



(FOR ASSEMBLY DETAILS AND DIMENSIONS, SEE MEDIAN BARRIER AT LEFT)

* BARRIER USED AS SHOULDER BARRIER AND PLACED IN AREAS WHERE THESE DIMENSIONS CANNOT BE OBTAINED SHALL BE SECURED TO ROADWAY.



SHOULDER BARRIER (WIDE BASE)

NOTES:

- ALL DIMENSIONS ARE IN MILLIMETRES UNLESS OTHERWISE STATED.
- ALL MATERIALS AND WORKMANSHIP SHALL BE IN ACCORDANCE WITH THE CURRENT Q.C.S. UNLESS OTHERWISE AGREED WITH THE ENGINEER.
- NORMAL USE OF PRECAST BARRIER UNITS IS RESTRICTED TO CURVATURES WITH RADII GREATER THAN 235mm.
- PRECAST BARRIER USED AS SEMI-PERMANENT BARRIER SHALL BE SECURED TO ROADWAY AS DIRECTED. SEE DRG. No. SD 6-10-1002 FOR ANCHORING DETAILS.
- NARROW BASE SHOULDER BARRIER TO BE USED ONLY AT LOCATIONS WITH BACKFILL BEHIND BARRIER AS SHOWN ON PLANS.
- TEMPORARY CONCRETE BARRIER TO BE PRECAST CONCRETE MEDIAN BARRIER WITH PIN AND LOOP ASSEMBLY.
- CONCRETE MEDIAN BARRIER IS AN ACCEPTABLE ALTERNATIVE TO WIDE BASE SHOULDER BARRIER.
- CONCRETE TO BE CLASS 40/20 AS PER QCS.
- ALL REINFORCEMENT SHALL BE FULL LENGTH AS SHOWN AND SHALL BE 50mm CLEAR OF NEAREST FACE OF CONCRETE UNLESS OTHERWISE SHOWN.
- ALL PINS, BOLTS, DOWELS, LOOP BARS, AND CONNECTORS SHALL BE HOT-DIP GALVANIZED AFTER FABRICATION.
- WHEN SCUPPERS ARE NOT REQUIRED, PLUG THEM WITH A MINIMUM 50mm OF GROUT, AS DIRECTED.
- CONCRETE GROUT FOR GROUTING OVER PINS, PINNING HOLES OR GROUTING OF SCUPPERS SHALL BE A NON-SHRINKING GROUT, WEAK IN STRENGTH AND OF THICK CONSISTENCY, AS DIRECTED.
- MAXIMUM CHORD LENGTH FOR CURVES WITH A 435mm RADIUS OR LESS SHALL BE 3.810m. MAX. CHORD LENGTH FOR CURVES WITH RADII EXCEEDING 435mm SHALL BE 7.620m.
- MAXIMUM DEFLECTION UNDER NCHRP350 TL-3 CONDITIONS IS 760mm. REFER TO REPORT NO. FHWA-OR-RD-02-07.

0	20MAR16	ISSUED FOR USE	
Rev.	Date	Revision Details	Appd.
هيئة الأشغال العامة Public Works Authority P.O.Box 22188 Tel.: (0874) 44950000 Fax.: (0874) 44950999 www.ashghal.gov.qa			
PA PROJECTS AFFAIRS QCS Section: Section 6 - Road Works Part 10 - Vehicle Crash Barriers			
Drawing Title: TEMPORARY PRECAST CONCRETE BARRIER PIN AND LOOP ASSEMBLY			
Approved:	Sheet No:	1 OF 1	
Date:	MARCH 2016	Scale:	N.T.S.
Drawing Number:	SD 6-10-1001	Revision:	0