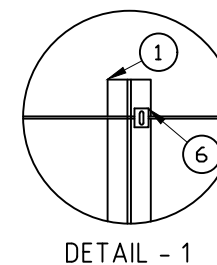


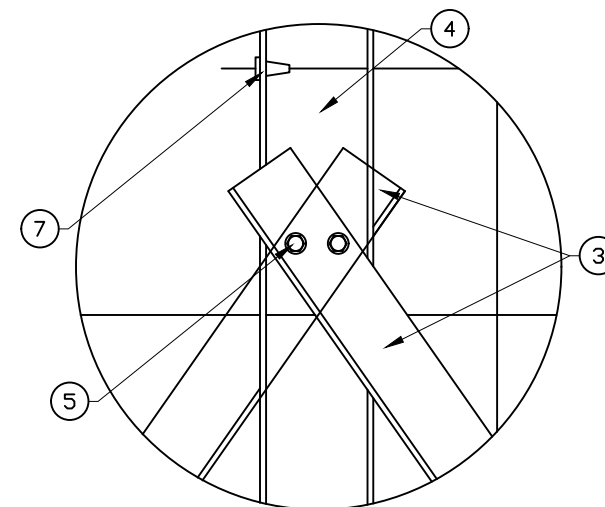
FENCE DETAIL

A	SELVAGE WIRE	3,55	1050 N/mm	2
B	SELVAGE WIRE	3,55	1050 N/mm	2
C	STAY WIRE	2,50	695/850 N/mm	2
D	LINE WIRE	2,50	1235/1390 N/mm	2
E	KNOT WIRE	2,24	415/495 N/mm	2

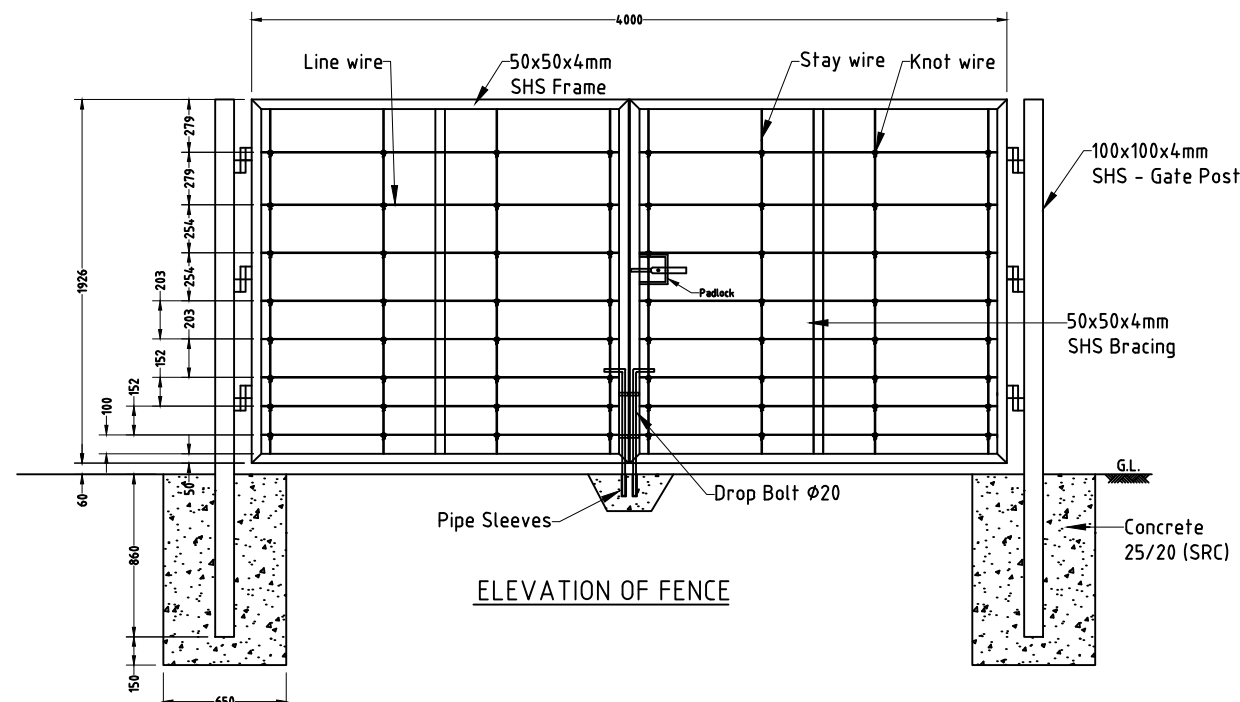
1	INTERMEDIATE POST	IPE80	L=2500 mm
2	END POST	IPE120	L=2500 mm
3	STRUT	L80X40X6	L=2500 mm
4	STRAINING POST	IPE120	L=2500 mm
5	BOLT, NUT AND WASHER	M10	
6	CLIP		PVC/STAINLESS STEEL
7	WIREVISE		
8	CAMEL FENCE		



DETAIL - 1



DETAIL - 2



ELEVATION OF FENCE

NOTES:

1. ALL DIMENSIONS ARE IN MILLIMETERS UNLESS OTHERWISE NOTED.
2. ALL STEEL FOR POSTS AND STRUTS SHALL BE S 275 JR.
3. ALL POSTS, STRUTS AND STRAINING FITTINGS TO BE GALVANIZED AS SPECIFIED.
4. ALL WIRES ARE HOT-DIP GALVANIZED ZINC COATING.
5. STRAINING POSTS SHALL BE PROVIDED AT ALL ENDS AND CORNERS, AT CHANGES IN DIRECTION OR ACUTE VARIATIONS IN LEVEL AND AT INTERVALS NOT EXCEEDING 150M IN STRAIGHT LENGTH.
6. THE CONTRACTOR SHALL PREPARE DETAIL SHOP DRAWINGS FOR THE FENCE SYSTEM WITH THE SCHEDULE BY MAJOR COMPONENTS FOR THE APPROVAL OF THE ENGINEER BEFORE ERECTION.
7. THE CONTRACTOR SHALL SUPPLY SHOP DRAWINGS FOR 4M WIDE GATES INCLUDING DRAWING OF SLIDING LATCH, DROP BOLTS AND HINGE DETAILS. THE LATCH WILL INCLUDE PROVISION FOR A HEAVY DUTY PADLOCK, LOCK & KEY AND CHAIN AND SHALL OBTAIN THE APPROVAL OF THE ENGINEER BEFORE ERECTION.
8. THE CONTRACTOR SHALL SUBMIT SAMPLES OF FENCE AND GATE MATERIALS FOR THE ENGINEER'S APPROVAL.
9. ALL CONCRETE FOUNDATIONS TO BE GRADE 25 (SRC).

09	DEC 2018	REVISED AS PER RMD COMMENTS	
01	JUL 2017	REVISED AS PER RMD COMMENTS	
00	JAN 2016	NEW ISSUE TO QCS 2014	

هيئة الأشغال العامة
 Public Works Authority
 P.O.Box 22188
 Tel.: (0974) 44950000
 Fax.: (0974) 44950999
 www.ashghal.gov.qa

قطر نستحق الأفضل
 Qatar Deserves The Best

PROJECTS AFFAIRS

QCS Section:
 6 ROADWORKS
 PART 12 FENCING

Drawing Title:
 CAMEL FENCE
 (STOCK PROOF FENCE)

Approved:	Sheet No: 1 OF 1
Date:	Scale: NTS
Drawing Number: SD 6-12-306	Revision: 2