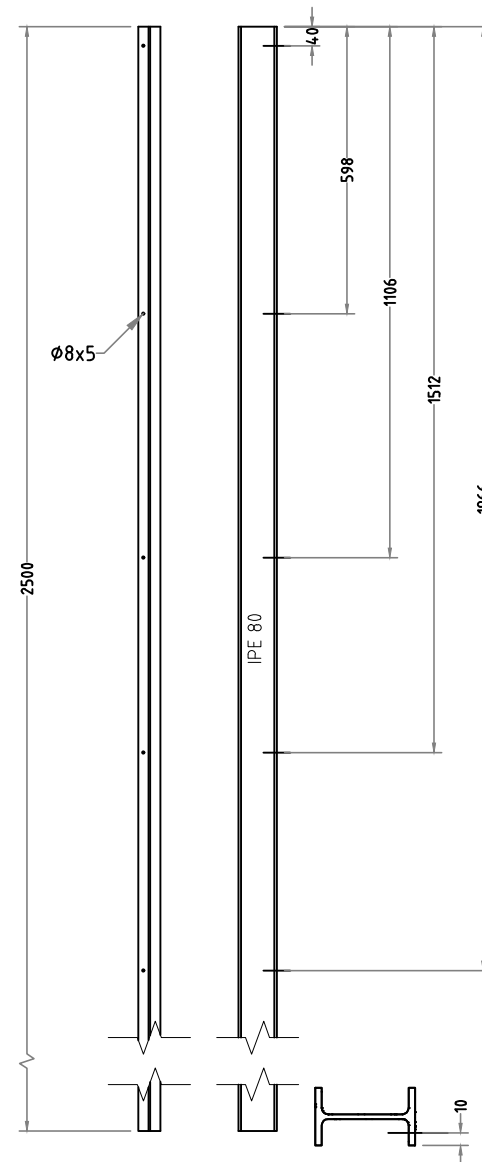
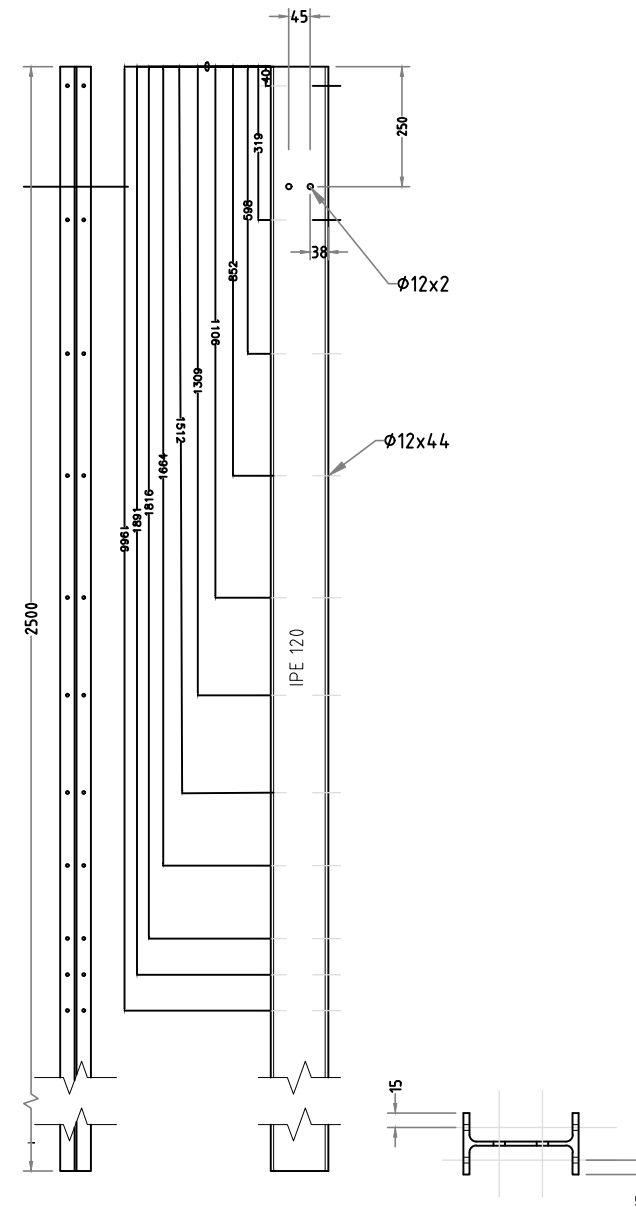


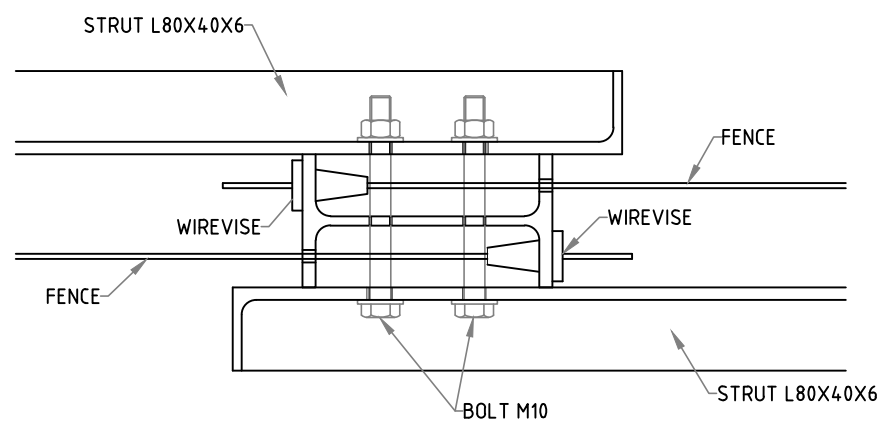
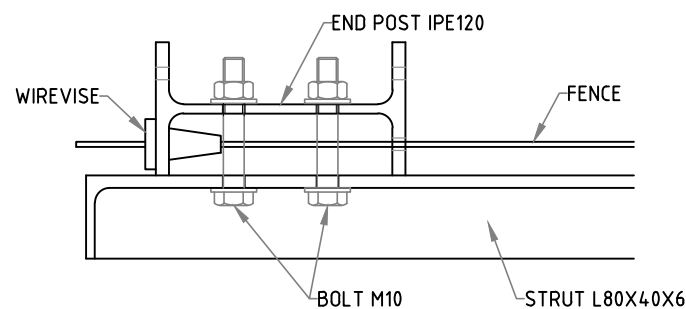
STRUT L 80x40x6
FOR END POST AND STRAINING POST



INTERMEDIATE POST (IPE 080)



END POST/STRAINING POST (IPE 120)



NOTES:

1. ALL DIMENSIONS ARE IN MILLIMETERS UNLESS OTHERWISE NOTED.
2. ALL STEEL FOR POSTS AND STRUTS SHALL BE S 275 JR.
3. ALL POSTS, STRUTS AND STRAINING FITTINGS TO BE GALVANIZED AS SPECIFIED.
4. ALL WIRES ARE HOT-DIP GALVANIZED ZINC COATING.
5. STRAINING POSTS SHALL BE PROVIDED AT ALL ENDS AND CORNERS, AT CHANGES IN DIRECTION OR ACUTE VARIATIONS IN LEVEL AND AT INTERVALS NOT EXCEEDING 150M IN STRAIGHT LENGTH.
6. THE CONTRACTOR SHALL PREPARE DETAIL SHOP DRAWINGS FOR THE FENCE SYSTEM WITH THE SCHEDULE BY MAJOR COMPONENTS FOR THE APPROVAL OF THE ENGINEER BEFORE ERECTION.
7. THE CONTRACTOR SHALL SUPPLY SHOP DRAWINGS FOR 4M WIDE GATES INCLUDING DRAWING OF SLIDING LATCH, DROP BOLTS AND HINGE DETAILS. THE LATCH WILL INCLUDE PROVISION FOR A HEAVY DUTY PADLOCK, LOCK & KEY AND CHAIN AND SHALL OBTAIN THE APPROVAL OF THE ENGINEER BEFORE ERECTION.
8. THE CONTRACTOR SHALL SUBMIT SAMPLES OF FENCE AND GATE MATERIALS FOR THE ENGINEER'S APPROVAL.
9. ALL CONCRETE FOUNDATIONS TO BE GRADE 25 (SRC).

Rev.	Date	Revision Details	Appd.
09	DEC 2018	REVISED AS PER RMD COMMENTS	
01	JUL 2017	REVISED AS PER RMD COMMENTS	
00	JAN 2016	NEW ISSUE TO QCS 2014	

هيئة الأشغال العامة
Public Works Authority
P.O.Box 22188
Tel. : (0874) 44950000
Fax. : (0874) 44950999
www.ashghal.gov.qa

PA
PROJECTS AFFAIRS

QCS Section:
6 ROADWORKS
PART 12 FENCING

Drawing Title:
**CAMEL FENCE
(STOCK PROOF FENCE)
POST DETAILS**

Approved:	Sheet No:	1 OF 1
Date:	Scale:	NTS
Drawing Number:	Revision:	2

SD 6-12-307