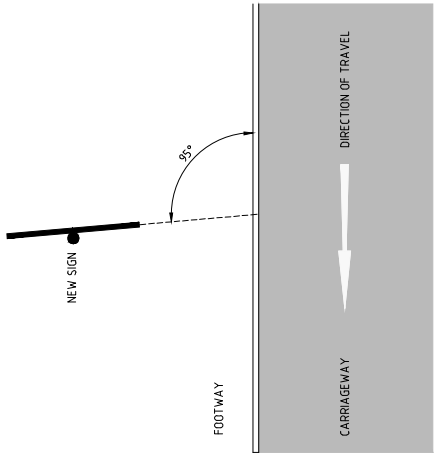
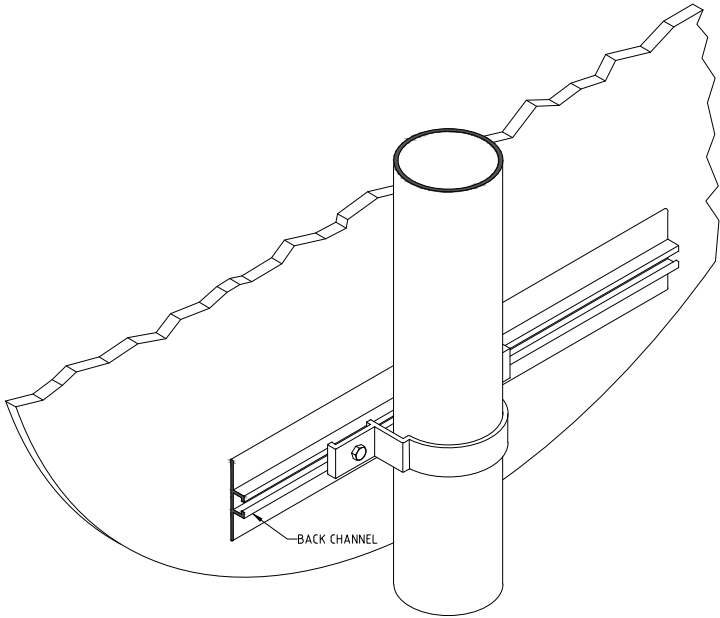


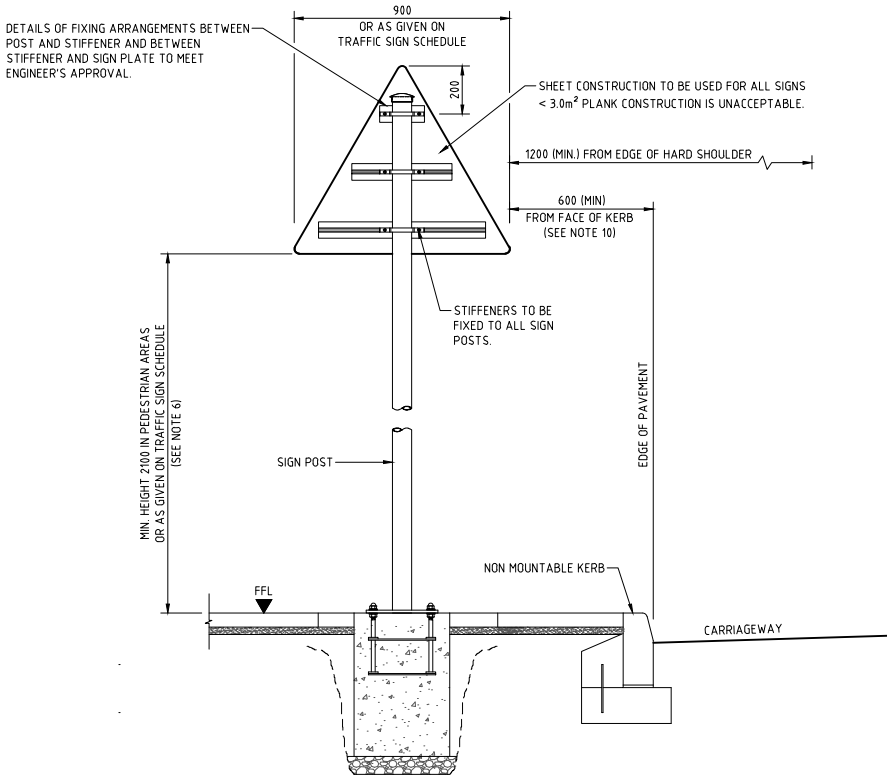
SIGN POSITION WITHIN TRAFFIC ISLAND



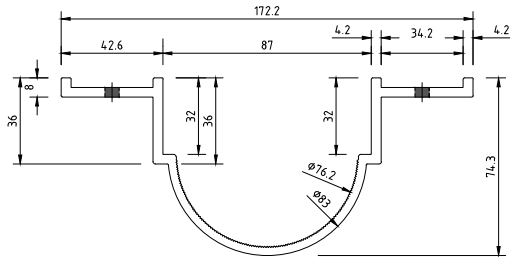
SIGN ORIENTATION ON STRAIGHT ROAD ALIGNMENT  
(OTHERWISE AS INSTRUCTED BY ENGINEER)



ISOMETRIC VIEW



SINGLE POST SIGN PLACEMENT



PLAN

DETAIL A  
TYPICAL MOUNTING DETAIL (CIRCULAR POST)  
SCALE N.T.S.

- NOTES:
1. ALL DIMENSIONS ARE IN MILLIMETRES, UNLESS OTHERWISE STATED.
  2. ALL MATERIALS AND WORKMANSHIP SHALL BE IN ACCORDANCE WITH THE CURRENT Q.C.S. UNLESS OTHERWISE AGREED WITH THE ENGINEER.
  3. FOR SET BACKS AND MOUNTING HEIGHTS REFERENCE SHALL BE MADE TO THE QATAR TRAFFIC CONTROL MANUAL.
  4. FOR SIGN POST FOUNDATION DETAILS REFER TO STANDARD DRAWING SD 6-13-110.
  5. SIGN PLATES LESS THAN 3.0m<sup>2</sup> MAY ONLY BE SUPPORTED BY HOLLOW SECTIONS.
  6. IN SHARED USE PATHS AND DESIGNATED CYCLE TRACKS NO SIGN EDGE SHALL BE PLACED LOWER THAN 2300mm FROM THE ADJACENT SURFACE.
  7. BRACKETS AND CLAMPS MUST BE ALUMINUM AND BOLTS, NUT, WASHER MUST BE STAINLESS STEEL GRADE A4.
  8. SIGN PLATES SHALL BE MANUFACTURED FROM SHEET ALUMINUM, MINIMUM 3mm THICK, IN ACCORDANCE WITH BS EN 485.
  9. THE REAR FACES OF SIGNS SHALL BE PAINTED WITH AN APPROVED ANTI-GLARE PAINT.
  10. AN INFORMATION PLATE OR STICKER IS TO BE ATTACHED TO THE REAR OF THE TRAFFIC SIGN PROVIDING THE PROJECT NUMBER AND BARCODE, DATE OF FABRICATION AND INSTALLATION, AND NAME OF THE MANUFACTURER.
  11. FOR LATERAL AND VERTICAL POSITIONS OF TRAFFIC AND DIRECTIONAL SIGNS REFER TO QATAR TRAFFIC CONTROL MANUAL, VOLUME 1 PART 1-TABLE 13.
  12. ALL RIVETS FIXING SIGN PLATES TO THEIR FRAMEWORK SHALL BE SELF-PIERCING TYPE AND AS PER Q.C.S. WELDING SHALL NOT BE ALLOWED TO THE BACK CHANNELS.
  13. DIGITAL PRINTING / SCREEN PRINTING SHALL NOT BE ALLOWED TO USE.

LEGEND:

FFL FINISHED FOOTWAY LEVEL

3	05 JUN 23	ISSUED FOR USE	
2	20 MAR 19	ISSUED FOR USE	
1	20 MAR 16	ISSUED FOR USE	
0	15 SEP 13	ISSUED FOR USE	
Rev.	Date	Revision Details	Appd.

هيئة الأشغال العامة  
Public Works Authority

P.O. Box 22188  
Tel.: (0974) 44950000  
Fax.: (0974) 44950999  
www.ashghal.gov.qa

قطر تستحق الأفضل  
Qatar Deserves The Best

**PA**  
PROJECTS AFFAIRS

QCS Section:  
Section 6 - Road Works  
Part 13 - Traffic Signs, Markings and Studs

Drawing Title:  
**TRAFFIC SIGN  
FIXING DETAILS  
SINGLE POST**

Approved:	Sheet No: 1 OF 1
Date: MARCH 2019	Scale: NTS
Drawing Number: SD 6-13-111	Revision: 3