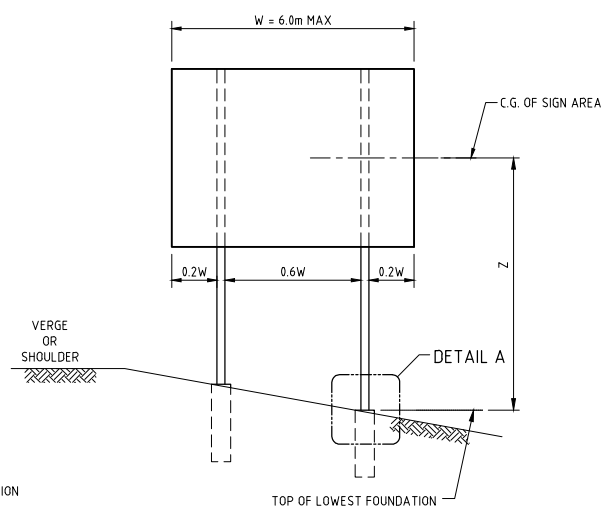
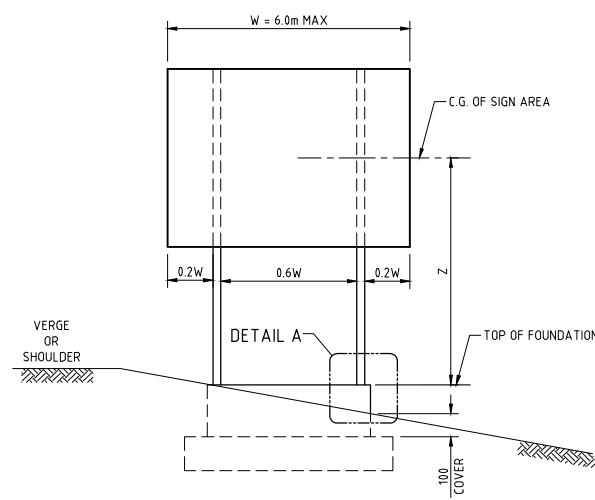


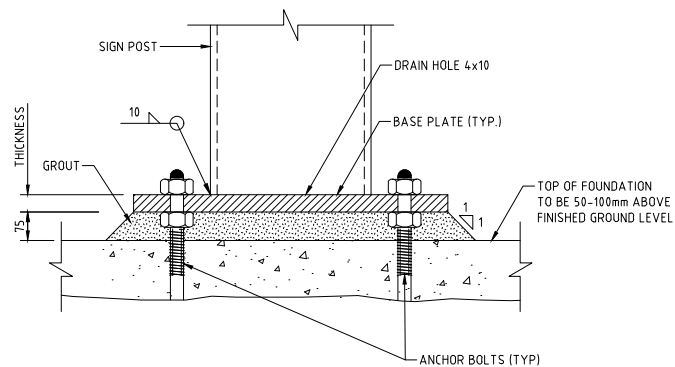
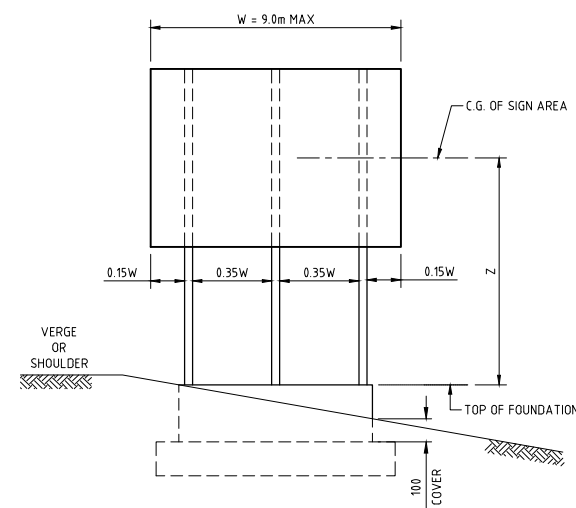
**CIDH FOUNDATION ALTERNATIVE**  
(PREFERRED IF GROUND CONDITIONS SUITABLE)



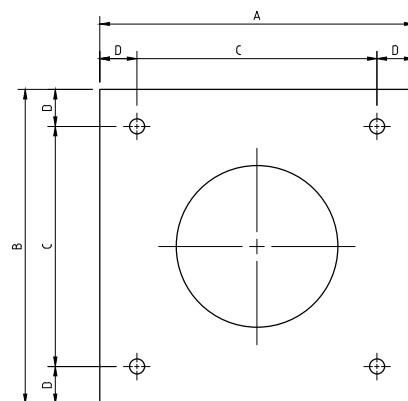
**MULTI-POST**



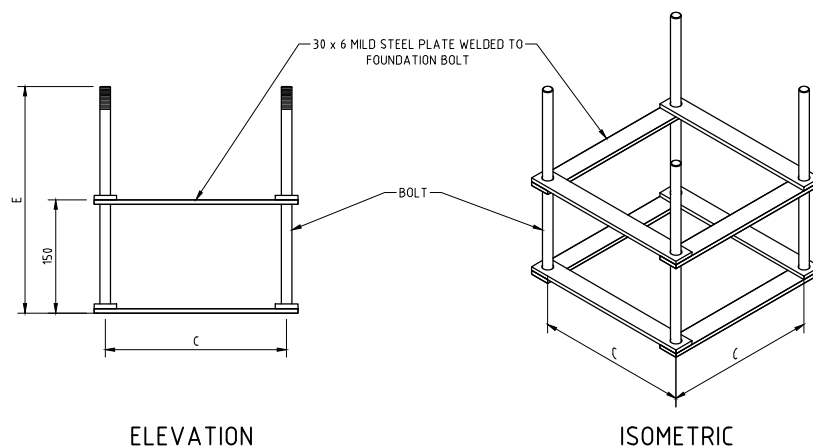
**SPREAD FOOTING FOUNDATION ALTERNATIVE**  
(OPTIONAL IF REQUIRED)



**DETAIL A**



**BASE PLATE - CIRCULAR HOLLOW POST**  
( PREFERRED OPTION )



**DETAIL B**

Base Plate & Bolt Data								
Circular Hollow Post								
Post Type	Base Plate					Bolts		
	A	B	C	D	Thickness	Diameter in MM	Number	Length in MM
A	-	-	-	-	-	-	-	-
B	300	300	240	30	12	12	4	400
C	300	300	240	30	14	14	4	400
D	300	300	240	30	20	14	4	400
E	350	350	250	50	22	16	4	550
F	350	350	250	50	22	16	4	550
G	400	400	300	50	32	20	4	550
H	400	400	300	50	35	20	4	650
I	500	500	400	50	35	25	4	650
J	500	500	400	50	40	25	4	650

#### NOTES:

1. ALL DIMENSIONS ARE IN MILLIMETRES UNLESS OTHERWISE STATED.
2. ALL MATERIALS AND WORKMANSHIP SHALL BE IN ACCORDANCE WITH THE CURRENT Q.C.S. UNLESS OTHERWISE AGREED WITH THE ENGINEER.
3. DIRECTIONAL SIGNS SHALL COMPLY WITH THE REQUIREMENTS OF THE LATEST EDITIONS OF BS 873 AND THE QATAR TRAFFIC CONTROL MANUAL.
4. STANDARD DETAILS SHOW THE MINIMUM FOUNDATION SIZE AND DEPTH IN ACCORDANCE WITH THE QATAR TRAFFIC CONTROL MANUAL. FOR EACH SIGN THE CONTRACTOR SHALL PREPARE DETAILED CALCULATIONS AND WORKSHOP DRAWINGS TO DEMONSTRATE THE SUITABILITY OF THE PROPOSED FOUNDATION FOR LOCAL CONDITIONS.
5. SIGN STRUCTURE ARE DESIGNED TO RESIST WIND VELOCITY OF 120 KILOMETRES PER HOUR WITH GUSTS UP TO 160KPH.
6. THE SIGN SUPPORT SYSTEM SHALL BE DESIGNED TO BE PASSIVELY SAFE AND TO CONFORM WITH THE REQUIREMENTS OF BS EN 12767.
7. LATERAL FORCES IN FOUNDATION DESIGN TO BE RESTRAINED BY UNDISTURBED GROUND ONLY.
8. STRUCTURAL STEELWORK TO BE GRADE S355 OR ASTM A50 GALVANIZED IN ACCORDANCE WITH QCS.
9. FOR FOUNDATION DETAILS REFER TO DRG No. SD 6-13-115.
10. MOUNTING HEIGHT SHALL BE IN ACCORDANCE WITH THE CURRENT VERSION OF QTCM.
11. BOLTS AND STEEL STRUCTURE MUST BE HOT DIP GALVANIZED

#### LEGEND:

- C.G. CENTRE OF GRAVITY  
CIDH CAST IN DRILLED HOLE

2	17MAR19	ISSUED FOR USED	
1	20MAR16	ISSUED FOR USE	
0	15SEP13	ISSUED FOR USE	
Rev.	Date	Revision Details	Appd.

هيئة الأشغال العامة  
Public Works Authority

P.O.Box 22188  
Tel.: (0974) 44950000  
Fax.: (0974) 44950999  
www.ashghal.gov.qa

قطر تستحق الأفضل  
Qatar Deserves The Best

**PA**  
PROJECTS AFFAIRS

QCS Section:  
Section 6 - Road Works  
Part 13 - Traffic Signs, Markings and Studs

Drawing Title:  
**ROUTE CONFIRMATION AND  
GENERAL INFORMATION SIGN  
TYPICAL FIXING DETAILS**

Approved:	Sheet No: 1 OF 1
Date: MARCH 2019	Scale: N.T.S.
Drawing Number: SD 6-13-114	Revision: 2