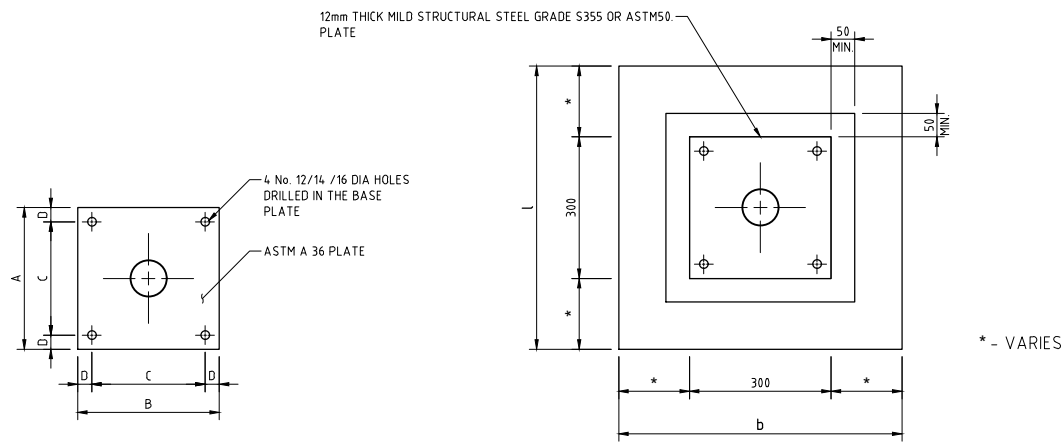


ELEVATION

SECTION



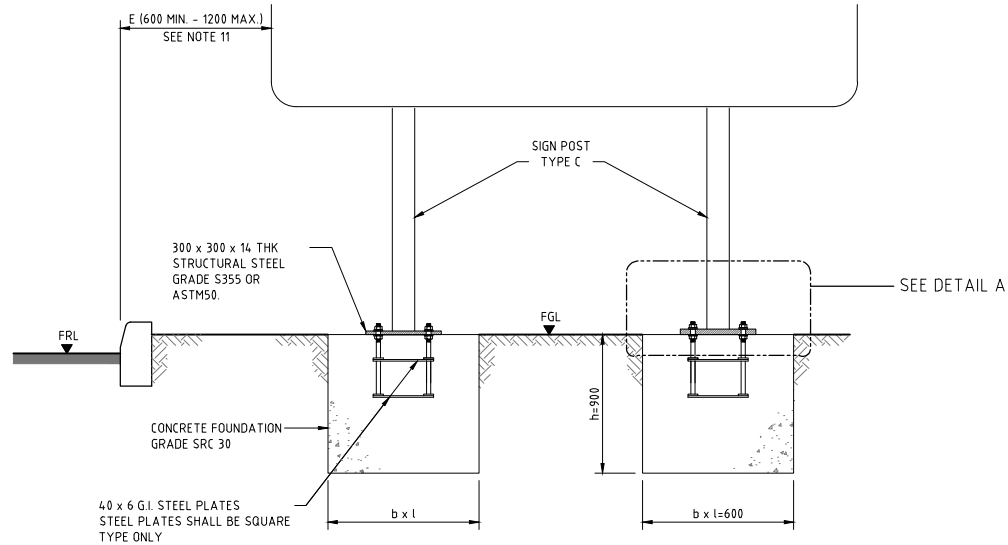
PLAN

PLAN

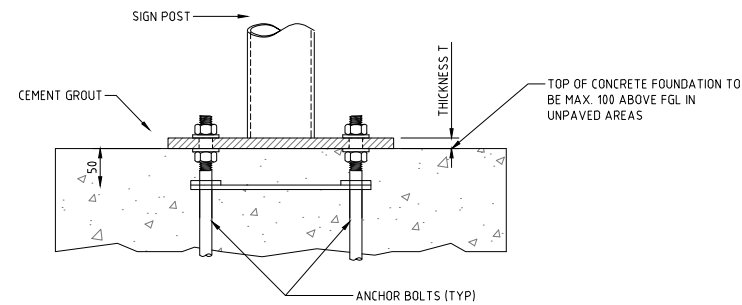
POST FOUNDATION DETAIL

BASE PLATE AND BOLT DATA								
FOUNDATION TYPE	BASE PLATE					BOLTS		
	A	B	C	D	THICKNESS 'T'	DIAMETER	NUMBER	L
URBAN AREAS	300	300	240	30	12	12	4	400
RURAL AREAS	300	300	240	30	12	12	4	400

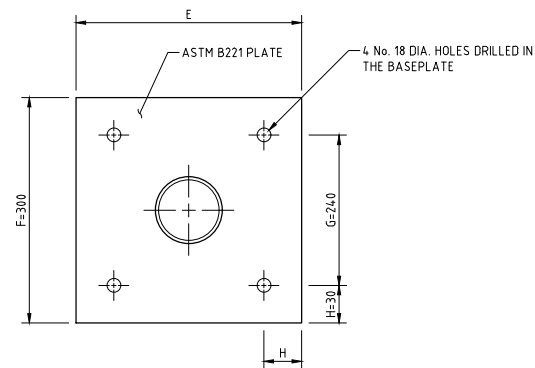
CONCRETE FOUNDATION DATA		
h	b	l
600	600	600
900	600	600



ELEVATION



DETAIL A



STREET NAME SIGN TYPE F DETAILS
WITH BASE PLATED POST

BASE PLATE AND BOLT DATA								
POST TYPE	BASE PLATE					BOLTS		
	E	F	G	H	THICKNESS 'T'	DIAMETER	NUMBER	L
TYPE C	300	300	240	30	14	14	4	400

CONCRETE FOUNDATION DATA			
MOUNTING HEIGHT (m)	DIMENSIONS (mm)		
	POST TYPE-C		
	h	b	l
1.5 TO 2.1	900	600	600

NOTES:

- ALL DIMENSIONS ARE IN MILLIMETRES UNLESS OTHERWISE STATED.
- ALL MATERIALS AND WORKMANSHIP SHALL BE IN ACCORDANCE WITH THE CURRENT Q.C.S. UNLESS OTHERWISE AGREED WITH THE ENGINEER.
- DIRECTIONAL SIGNS SHALL COMPLY WITH THE REQUIREMENTS OF THE LATEST EDITIONS OF BS 873 AND THE QATAR TRAFFIC CONTROL MANUAL.
- STANDARD DETAILS SHOW THE MINIMUM FOUNDATION SIZE AND DEPTH IN ACCORDANCE WITH THE QATAR TRAFFIC CONTROL MANUAL. FOR EACH SIGN THE CONTRACTOR SHALL PREPARE DETAILED CALCULATIONS AND WORKSHOP DRAWINGS TO DEMONSTRATE THE SUITABILITY OF THE PROPOSED FOUNDATION FOR LOCAL CONDITIONS.
- DIMENSION OF CIRCULAR POST

TYPE - B	76.1 x 3.2
TYPE - C	88.9 x 4.0
TYPE - D	114.3 x 5.0
- THE SIGN SUPPORT SYSTEM SHALL BE DESIGNED TO BE PASSIVELY SAFE AND TO CONFORM WITH THE REQUIREMENTS OF BS EN 12767.
- CONCRETE BASE TO PROJECT 100mm ABOVE FINISHED LEVEL AND HAVE 50mm CHAMFER AS INDICATED.
- SIGN MOUNTING DETAILS ARE INDICATIVE. OTHER DETAILS MAY BE REQUIRED OR APPROVED BY THE ENGINEER BASED ON MANUFACTURER'S TECHNICAL DATA.
- STEEL ANCHOR BOLTS ARE TO BE GRADE 235JR.
- THE POSTS SHALL BE HOT DIPPED GALVANIZED POSTS. THE DRILLING OF HOLES WILL NOT BE ALLOWED AFTER GALVANIZING WHERE THE ENGINEER CONSIDERS THAT THE GALVANIZING WAS DAMAGED DURING TRANSPORTATION. COLD GALVANIZING WILL BE ALLOWED ON AREAS LESS THAN 5 SQ. CM. WITH ENGINEER'S APPROVAL.
- FOR LATERAL AND VERTICAL POSITIONS OF TRAFFIC AND DIRECTIONAL SIGNS REFER TO QATAR TRAFFIC CONTROL MANUAL, VOLUME 1 PART 1-TABLE 1.3.
- PLATES SHALL BE MADE OFF STRUCTURAL STEEL GRADE S355 OR ASTM50.

LEGEND:

FGL	FINISHED FOOTWAY LEVEL
FRL	FINISHED ROAD LEVEL
FGL	FINISHED GROUND LEVEL
SRC	SULFATE RESISTANT CEMENT

Rev.	Date	Revision Details	Appd.
2	17MAR17	ISSUED FOR USE	
1	20MAR16	ISSUED FOR USE	
0	15SEP13	ISSUED FOR USE	

هيئة الأشغال العامة
Public Works Authority
P.O.Box 22188
Tel.: (0874) 44950000
Fax.: (0874) 44950999
www.ashghal.gov.qa

PA
PROJECTS AFFAIRS

QCS Section:
Section 6 - Road Works
Part 13 - Traffic Signs, Markings and Studs

Drawing Title:
STREET NAME SIGNS
FOUNDATION DETAILS
SIGN TYPE 'A' & 'F'

Approved:	Sheet No: 1 OF 1
Date: MARCH 2019	Scale: N.T.S.
Drawing Number: SD 6-13-118	Revision: 2