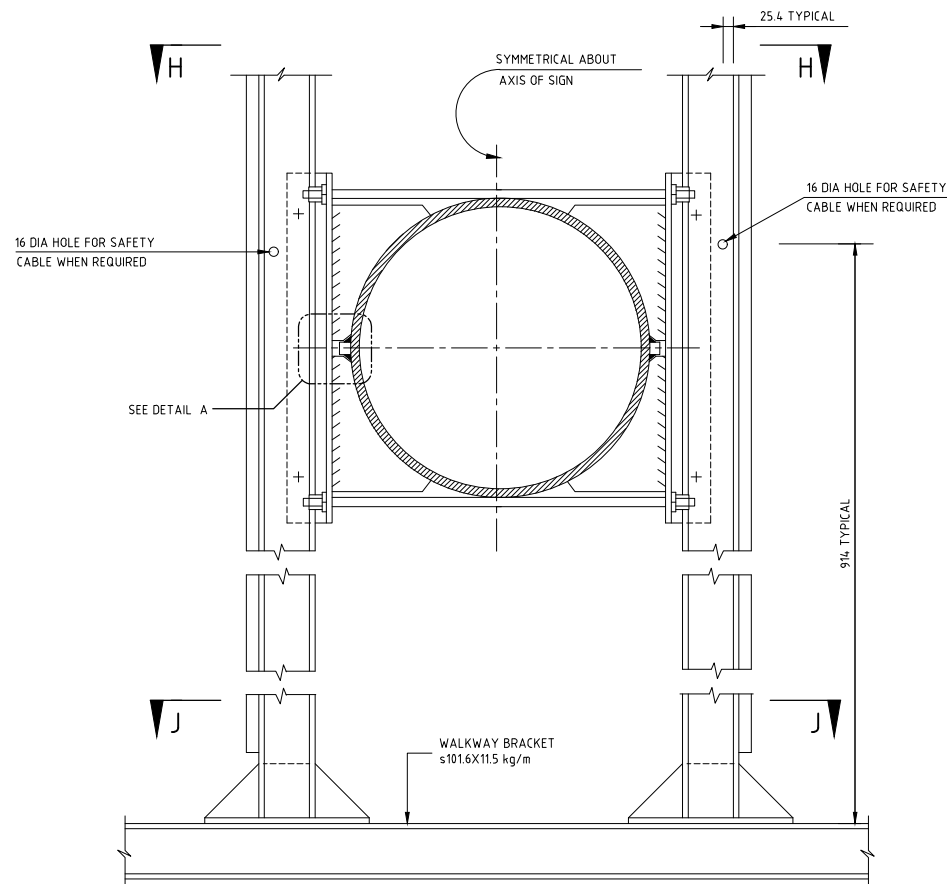
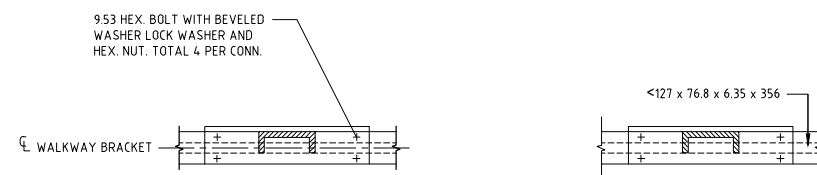


VIEW H - H

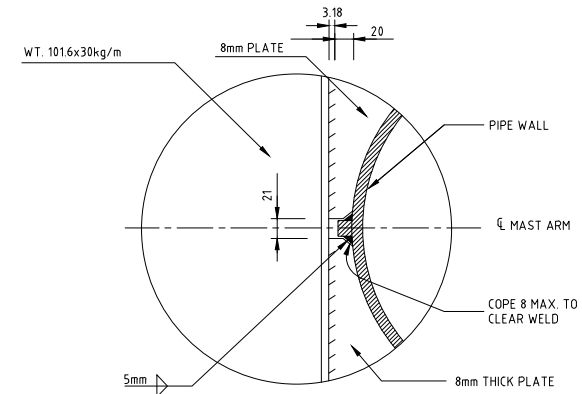


DOUBLE PANEL
(SEE NOTE 4)

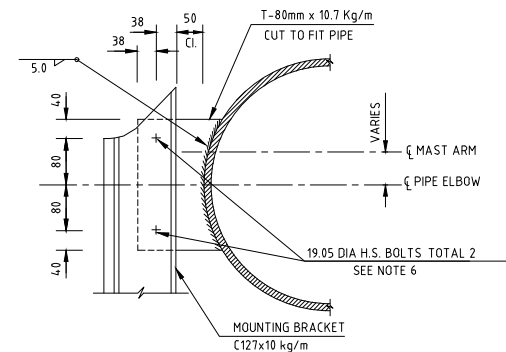
MOUNTING BRACKET ASSEMBLY DETAILS



SECTION J - J



DETAIL A



DETAIL B

(MOUNTING BRACKET ON ELBOW)

NOTES:

1. ALL DIMENSIONS ARE IN MILLIMETRES UNLESS OTHERWISE STATED.
2. ALL MATERIALS AND WORKMANSHIP SHALL BE IN ACCORDANCE WITH THE CURRENT Q.C.S. UNLESS OTHERWISE AGREED WITH THE ENGINEER.
3. THE CONTRACTOR SHALL SUBMIT SHOP DRAWINGS AND CALCULATIONS FOR THE ENGINEER'S APPROVAL PRIOR TO FABRICATION.
4. ASSEMBLY DETAILS SHOWN APPLY TO TANGENT PORTION OF PIPE ONLY. FOR MOUNTING BRACKET ON ELBOW SEE DETAIL 'B' ON DRG No. SD 6-13-203. FOR DETAILS NOT SHOWN OR NOTED SEE SINGLE PANEL.
5. FOR GANTRY LOCATIONS REFER TO TRAFFIC SIGNS SERIES DRAWINGS.
6. THE EXTERIOR MOUNTING BRACKETS TO FACE OUTWARDS TO ACCOMMODATE THE WALKWAY CHAIN ANGLE.

Rev.	Date	Revision Details	Appd.
2	17MAR19	ISSUED FOR USE	
1	20MAR16	ISSUED FOR USE	
0	15SEP13	ISSUED FOR USE	

هيئة الأشغال العامة
Public Works Authority

P.O.Box 22188
Tel. : (0974) 44950000
Fax. : (0974) 44950999
www.ashghal.gov.qa

قطر تستحق الأفضل
Qatar Deserves The Best

PA PROJECTS AFFAIRS

QCS Section:
Section 6 - Road Works
Part 13 - Traffic Signs, Markings and Studs

Drawing Title:

SIGN GANTRY DETAILS

Approved:	Sheet No: 2 OF 2
Date: MARCH 2019	Scale: N.T.S.
Drawing Number: SD 6-13-204	Revision: 2