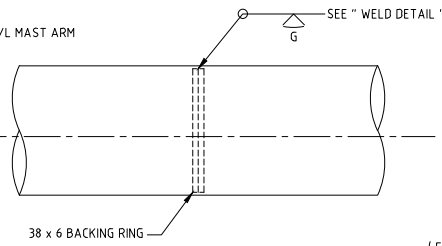
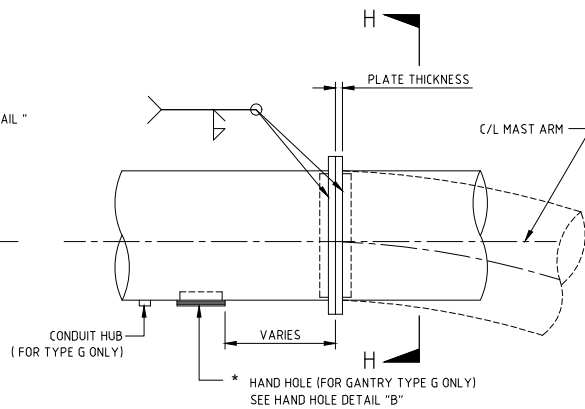


MAST ARM END DETAIL
(FOR "SINGLE POST TYPE" ONLY)

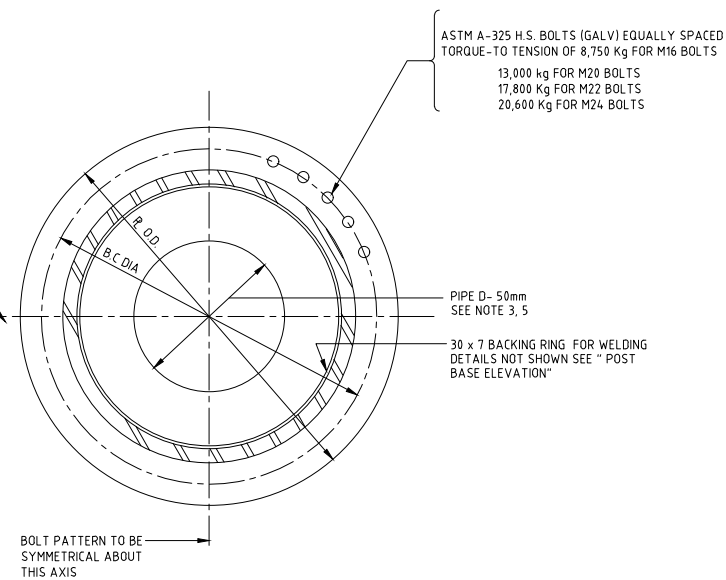


SHOP SPLICE

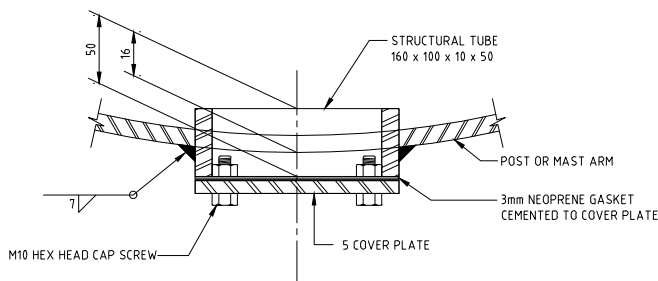


FIELD SPLICE

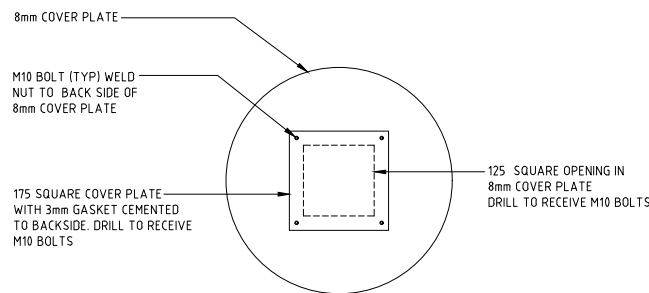
* LOCATE HAND HOLE AT NEAREST
HANGER ON MAST ARM



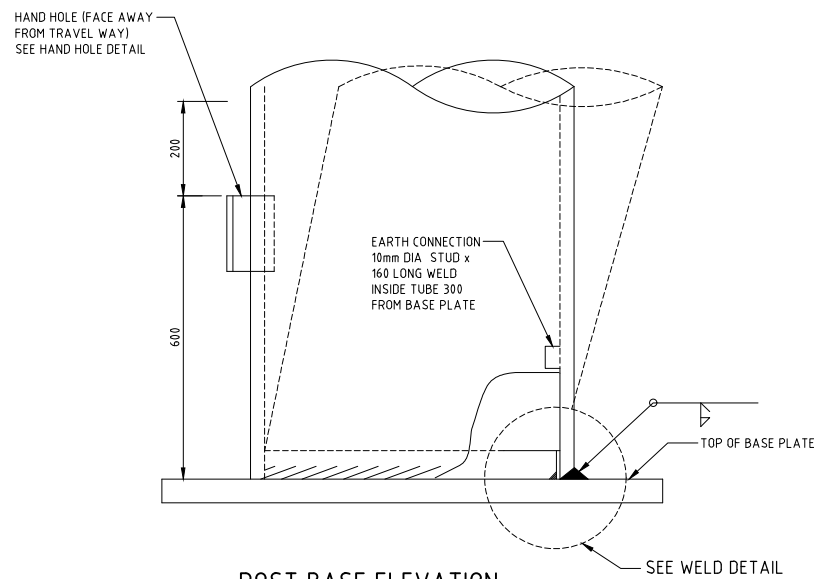
SECTION H - H



HAND HOLE DETAIL B
(MAST ARM AND POST)

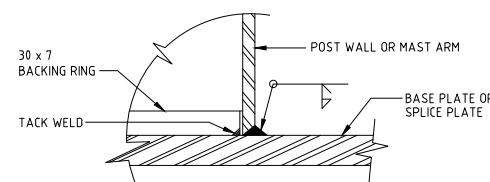


COVER PLATE HAND HOLE DETAIL "A"



POST BASE ELEVATION

FIELD SPLICE				
PIPE DIAMETER	PLATE THICKNESS	H.S. BOLTS	* B.C. DIAMETER	* PLATE O.D.
273.0 mm	32 mm	20 - M16	336 mm	400 mm
323.9 mm	32 mm	17 - M20	388 mm	452 mm
406.4 mm	32 mm	22 - M20	470 mm	534 mm
508.0 mm	38 mm	18 - M24	584 mm	660 mm
558.8 mm	38 mm	20 - M24	635 mm	712 mm
609.6 mm	38 mm	24 - M24	686 mm	762 mm
660.4 mm	38 mm	26 - M24	736 mm	812 mm
762.0 mm	40 mm	26 - M24	838 mm	914 mm
812.8 mm	40 mm	28 - M24	890 mm	968 mm
863.6 mm	40 mm	30 - M24	940 mm	1016 mm



WELD DETAIL

NOTES:

1. ALL DIMENSIONS ARE IN MILLIMETRES UNLESS OTHERWISE STATED.
2. ALL MATERIALS AND WORKMANSHIP SHALL BE IN ACCORDANCE WITH THE CURRENT Q.C.S. UNLESS OTHERWISE AGREED WITH THE ENGINEER.
3. PLACE SINGLE THIN BEAD OF SILICONE CAULKING COMPOUND AROUND HOLE PRIOR TO BOLTING. CAULKING NOT TO INTERFERE WITH FRICTION BETWEEN PLATES IN BOLTED AREA.
4. PRIME AND PAINT POST INTERIOR FROM BASE PLATE TO 200mm ABOVE LOWER HAND HOLE - UNLESS POST IS GALVANIZED
5. "D" IS INSIDE DIAMETER OF "EXTRA STRONG PIPE".
6. DESIGN BASED ON CAPACITY OF STANDARD PIPE.
7. PLACE HAND HOLE AND CONDUIT HUB PERPENDICULAR TO AXIS OF SIGN AND AWAY FROM APPROACHING TRAFFIC. DRILL AND TAP FOR 25mm. DIA. CONDUIT HUB ADJACENT TO MAST ARM HAND HOLES ONLY.

2	17MAR19	ISSUED FOR USE	
1	20MAR16	ISSUED FOR USE	
0	15SEP13	ISSUED FOR USE	
Rev.	Date	Revision Details	Appd.

هيئة الأشغال العامة
Public Works Authority

P.O.Box 22188
Tel.: (0974) 44950000
Fax.: (0974) 44950999
www.aashghal.gov.qa



قطر تستحق الأفضل
Qatar Deserves The Best

PA
PROJECTS AFFAIRS

QCS Section:
Section 6 - Road Works
Part 13 - Traffic Signs, Markings and Studs

Drawing Title:
**SIGN GANTRY
STRUCTURAL FRAMING
DETAILS**

Approved:	Sheet No: 1 OF 1
Date: MARCH 2019	Scale: N.T.S.
Drawing Number: SD 6-13-205	Revision: 2