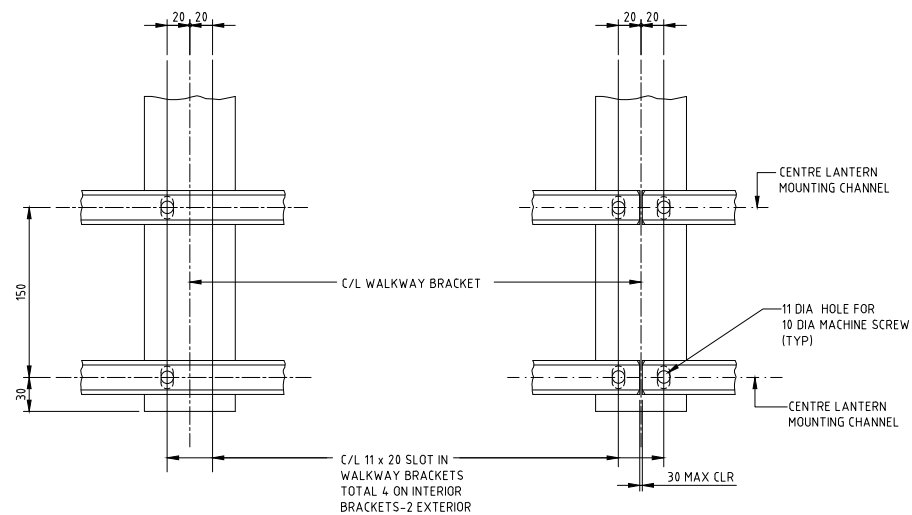
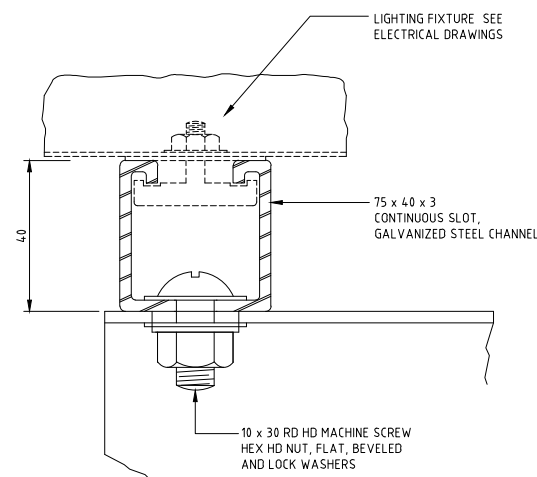


WALKWAY DETAILS



TYPICAL CONNECTION

CONNECTION AT SPLICE



LANTERN MOUNTING CHANNEL DETAILS

- NOTES:
1. ALL DIMENSIONS ARE IN MILLIMETRES UNLESS OTHERWISE STATED.
  2. ALL MATERIALS AND WORKMANSHIP SHALL BE IN ACCORDANCE WITH THE CURRENT Q.C.S. UNLESS OTHERWISE AGREED WITH THE ENGINEER.
  3. WELDED TYPE GRATING SHALL HAVE 32 x 4 BEARING BARS AT 30mm CENTERS WITH 7mm DIAMETER (OR EQUAL) CROSS BARS AT 100mm CENTERS. IF MECHANICAL LOCK GRATING IS USED, IT SHALL BE EQUAL IN STRENGTH TO THE WELDED TYPE. ALTERNATIVE HOLD - DOWN CLIPS SHALL BE SUBMITTED TO THE ENGINEER FOR APPROVAL.
  4. WALKWAY GRATING AND LANTERN MOUNTING CHANNELS TO BE CONTINUOUS ( NO SPLICES ) OVER AS MANY WALKWAY BRACKETS AS PRACTICALLY CONSISTENT WITH FABRICATION, EASE OF HANDLING AND ASSEMBLY.

2	17MAR19	ISSUED FOR USE	
1	20MAR16	ISSUED FOR USE	
0	15SEP13	ISSUED FOR USE	
Rev.	Date	Revision Details	Appd.

هيئة الأشغال العامة  
Public Works Authority

P.O.Box 22188  
Tel. : (0874) 44950000  
Fax. : (0874) 44950999  
www.asghal.gov.qa

قطر نسحق الأفضل  
Qatar Deserves The Best

**PA**  
PROJECTS AFFAIRS

QCS Section:  
Section 6 - Road Works  
Part 13 - Traffic Signs, Markings and Studs

Drawing Title:

COLLAPSIBLE SAFETY  
RAILING DETAILS

Approved:	Sheet No: 2 OF 2
Date: MARCH 2019	Scale: N.T.S.
Drawing Number: SD 6-13-207	Revision: 2