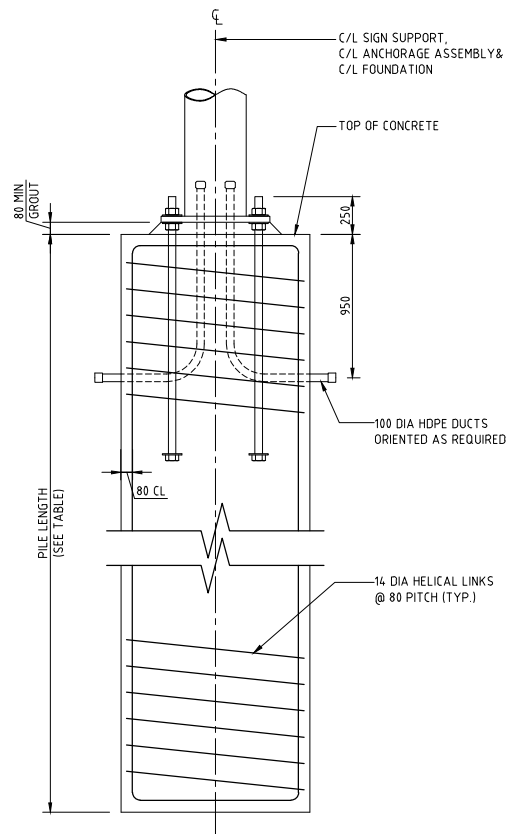
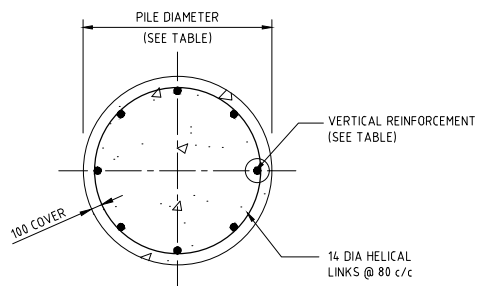


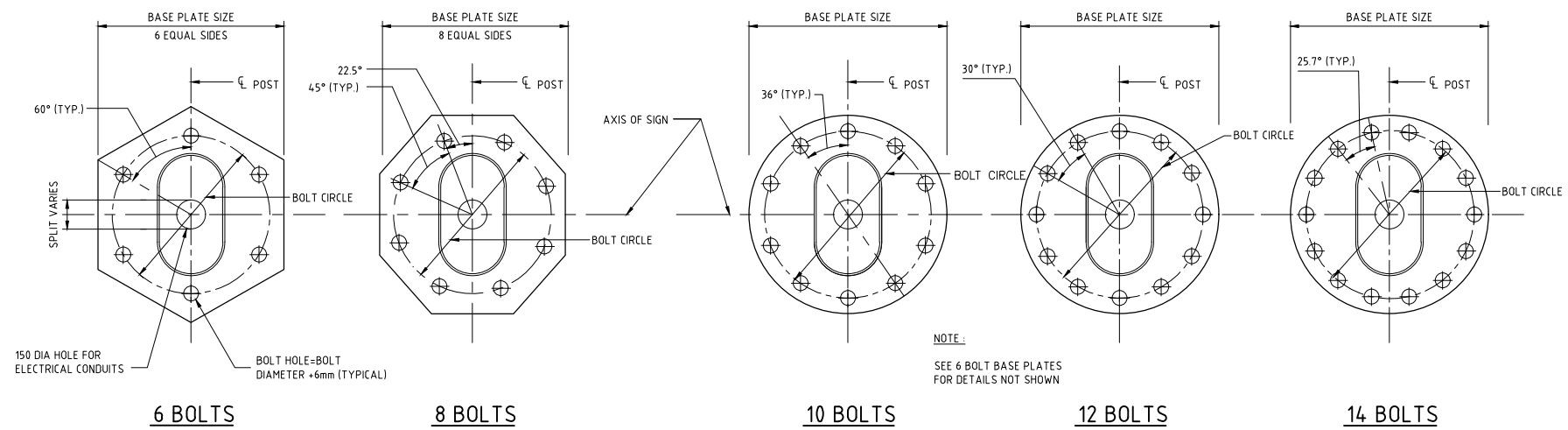
TOP PLAN



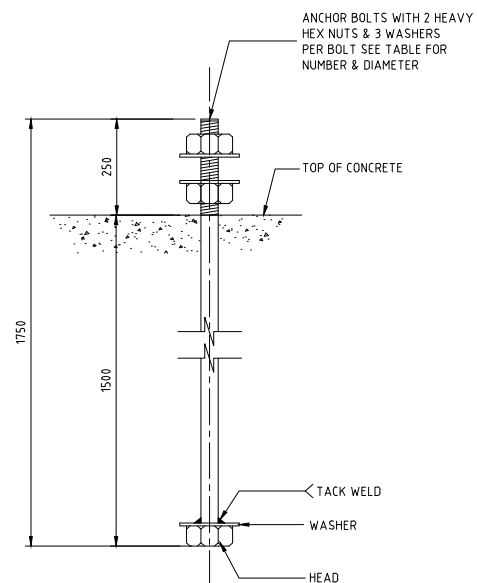
SECTION A-A



SECTION B-B



BASE PLATE DETAILS



ANCHOR BOLT DETAIL

CIDH FOUNDATION DETAILS			
FOUNDATION TYPE	PILE DIAMETER	PILE LENGTH	VERTICAL REINFORCEMENT
A	1.1 m	4.50 m	19 - 25 ø
B	1.1 m	5.50 m	19 - 25 ø
C	1.3 m	6.25 m	22 - 28 ø
D	1.3 m	7.00 m	22 - 28 ø
E	1.4 m	7.50 m	19 - 32 ø
F	1.4 m	8.00 m	19 - 32 ø
G	1.5 m	8.75 m	22 - 32 ø

BASE PLATE AND BLOT DETAILS			
STRUCTURE TYPE	ANCHOR NO. & DIA	BASE PLATE SIZE (mm x mm)	BOLT CIRCLE (mm)
GI	6 - 50 mm	648 x 40	574
GII	6 - 60 mm	796 x 50	710
GIII	8 - 60 mm	912 x 55	792
GIV	10 - 60 mm	1074 x 55	894
GV	12 - 60 mm	1176 x 55	996
GVI	12 - 60 mm	1226 x 60	1046
GVII	14 - 60 mm	1328 x 60	1148
CI	6 - 50 mm	632 x 45	556
CII	10 - 50 mm	860 x 50	710
CII	8 - 60 mm	956 x 55	840
CIV	10 - 60 mm	1172 x 55	992
CV	10 - 60 mm	1224 x 55	1044

NOTES:

- ALL DIMENSIONS ARE IN MILLIMETRES UNLESS OTHERWISE STATED.
 - ALL MATERIALS AND WORKMANSHIP SHALL BE IN ACCORDANCE WITH THE CURRENT Q.C.S. UNLESS OTHERWISE AGREED WITH THE ENGINEER.
 - PILE SHALL BE FORMED TO 150 MINIMUM BELOW GROUND SURFACE TO OBTAIN SMOOTH FINISH FOR EXPOSED PORTION.
 - DESIGN PILE LENGTH SHALL ASSUME RESTRAINT TO LATERAL FORCES TO BE PROVIDED BY UNDISTURBED GROUND ONLY.
 - BOLT TEMPLATE SHALL BE PROVIDED DURING INSTALLATION OF ANCHOR BOLTS.
 - FOR GANTRY LOCATIONS REFER TO TRAFFIC SIGNS SERIES DRAWINGS.
 - REFER TO DRG No. SD 6-13-201 & SD 6-13-202 FOR GANTRY STRUCTURE.
 - STRUCTURAL STEELWORK TO BE GRADE S355 OR ASTM A50 AND GALVANIZED IN ACCORDANCE WITH QCS.
 - BOLT HOLE EDGE DISTANCES 1250 ASSUMES BASE PLATES ARE NOT FABRICATED BY EITHER SHEARING OR HAND FLAME CUTTING.
 - SIGN GANTRY SHALL BE DESIGNED TO BE PASSIVELY SAFE IN CONFORMANCE WITH BS EN 12767 OR SHALL BE PROTECTED WITH AN APPROVED VEHICLE RESTRAINT SYSTEM.
- CONCRETE:**
- FOUNDATION CONCRETE SHALL BE MINIMUM GRADE SRC 40.
- REINFORCEMENT:**
- ALL REINFORCEMENT SHALL BE TYPE 2 DEFORMED, MINIMUM GRADE B500, CONFORMING TO BS 4449.
 - MINIMUM LAP LENGTH 55x DIA.
 - MINIMUM COVER TO REINFORCEMENT TO BE 75mm UNLESS OTHERWISE NOTED.

Rev.	Date	Revision Details	Appd.
2	17MAR19	ISSUED FOR USE	
1	20MAR16	ISSUED FOR USE	
0	15SEP13	ISSUED FOR USE	

هيئة الأشغال العامة
Public Works Authority

P.O.Box 22188
Tel. : (0974) 44950000
Fax : (0974) 44950999
www.ashghal.gov.qa

قطر تستحق الأفضل
Qatar Deserves The Best

PA
PROJECTS AFFAIRS

QCS Section:
Section 6 - Road Works
Part 13 - Traffic Signs, Markings and Studs

Drawing Title:
SIGN GANTRY BASE DETAILS

Approved:	Sheet No: 1 OF 1
Date: MARCH 2019	Scale: N.T.S.
Drawing Number: SD 6-13-208	Revision: 2