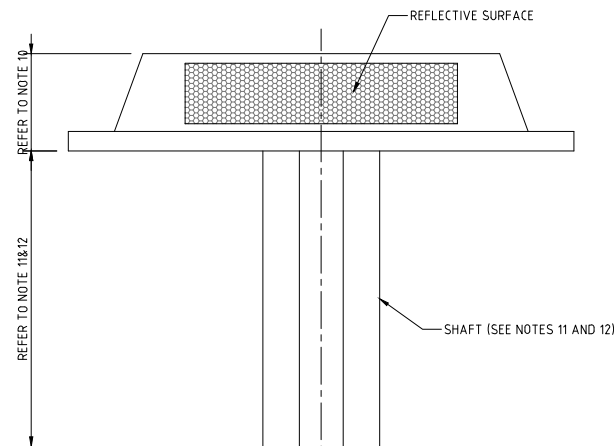
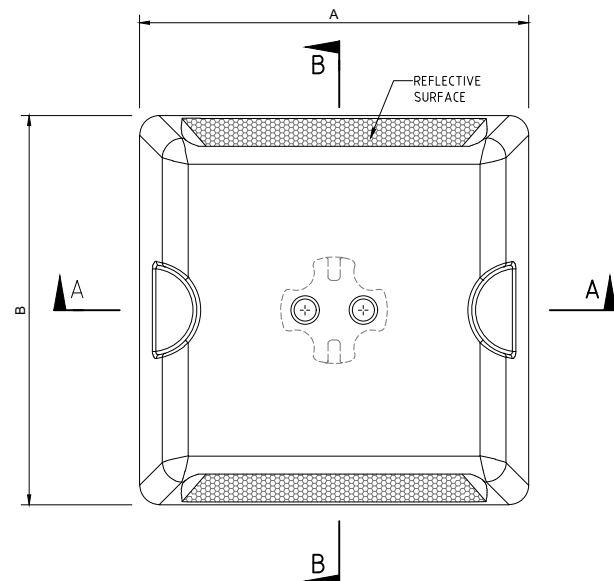


PLAN

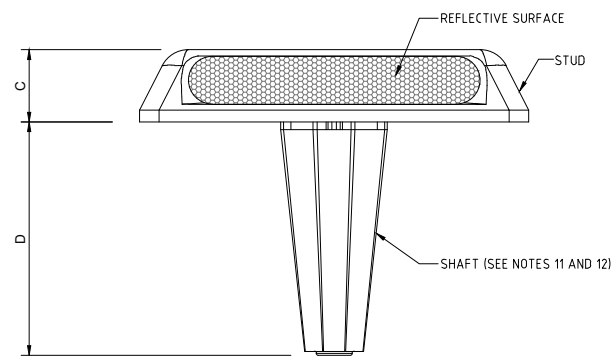


ELEVATION

INTEGRAL STUD AND ANCHORAGE

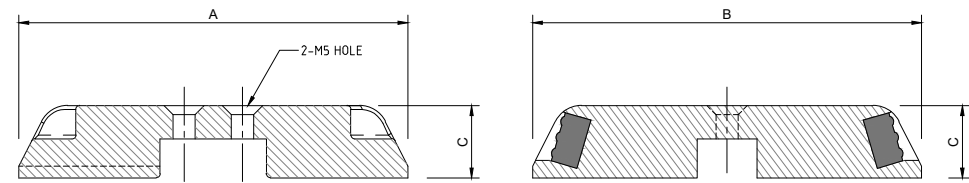


PLAN



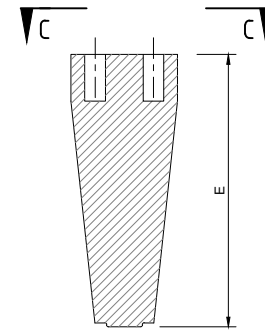
ELEVATION

ALTERNATIVE TWO PIECE STUD AND ANCHORAGE

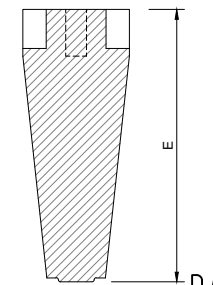


SECTION A - A

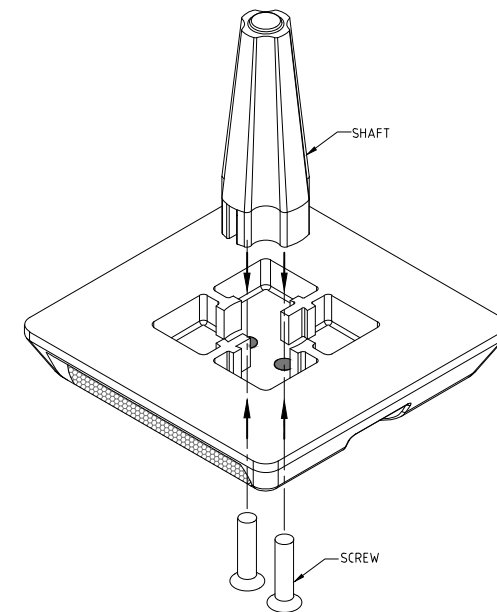
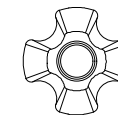
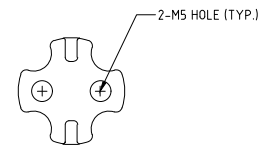
SECTION B - B



SECTION C - C (TOP)



SECTION D - D (BOTTOM)



ISOMETRIC VIEW (FROM BELOW)

NOTES:

1. ALL DIMENSIONS ARE IN MILLIMETRES UNLESS OTHERWISE STATED.
2. ALL MATERIALS AND WORKMANSHIP SHALL BE IN ACCORDANCE WITH THE CURRENT Q.C.S. AND INTERIM ADVICE NOTE (IAN) 041 UNLESS OTHERWISE AGREED WITH THE ENGINEER.
3. REFLECTIVE ROAD STUDS (REFLECTING RAISED PAVEMENT MARKERS) SHALL COMPLY WITH THE REQUIREMENTS OF THE LATEST EDITION OF THE QATAR TRAFFIC CONTROL MANUAL. AND BE APPROVED FOR USE BY P.W.A.
4. REFLECTIVE ROAD STUDS TO WITHSTAND A MECHANICAL LOAD OF 60 TON.
5. SLOPE OF REFLECTING FACE TO BE 20°.
6. REFLECTIVE MATERIAL TO BE ALIGNED TO FACE ONCOMING TRAFFIC.
7. DIMENSION 'A' TO 'E' FOR ALTERNATIVE TWO PIECE STUD AND ANCHORAGE PRODUCTS TO BE CONFIRMED BY MANUFACTURER AND APPROVAL OF THE P.W.A.
8. ALSO FOR DIMENSIONS REFER TO ASHGHAL'S VENDOR LIST.
9. FOR GLASS ELEMENTS REFER TO ASHGHAL'S VENDOR LIST.
10. THE ROAD STUDS SHALL MEASURE MINIMUM 100 MM X 100 MM X 20 (maximum +2) MM AND FOR TRUCKS ROADS THE ROAD STUDS SHALL MEASURE MINIMUM 150 MM X 150 MM X 20 (maximum +2) MM.
11. THE SHAFT SHALL BE "ANTI-TWIST/HOT-TITE", MINIMUM 50 MM LONG FOR ALL ROADS.
12. FOR TRUCK ROADS THE SHAFTS SHALL BE "ANTI-TWIST/HOT-TITE", MINIMUM 75 MM LONG.

3	15MAR20	ISSUED FOR USE	
2	20MAR19	ISSUED FOR USE	
1	20MAR16	ISSUED FOR USE	
0	15SEP13	ISSUED FOR USE	
Rev.	Date	Revision Details	Appd.

هيئة الأشغال العامة  
Public Works Authority

P.O.Box: 22188  
Tel.: 00974 44950000  
Fax: 00974 44950999

قطر يستحق الأفضل  
Qatar Deserves The Best  
www.ashghal.gov.qa

QCS Section: Section 6 - Road Works  
Part 13 - Traffic Signs, Markings and Studs

Drawing Title:

REFLECTIVE ROAD STUDS

Approved:	Sheet No: 1 OF 1
Date: MARCH 2020	Scale: 1:1 on A1
Drawing Number: SD 6-13-501	Revision: 3