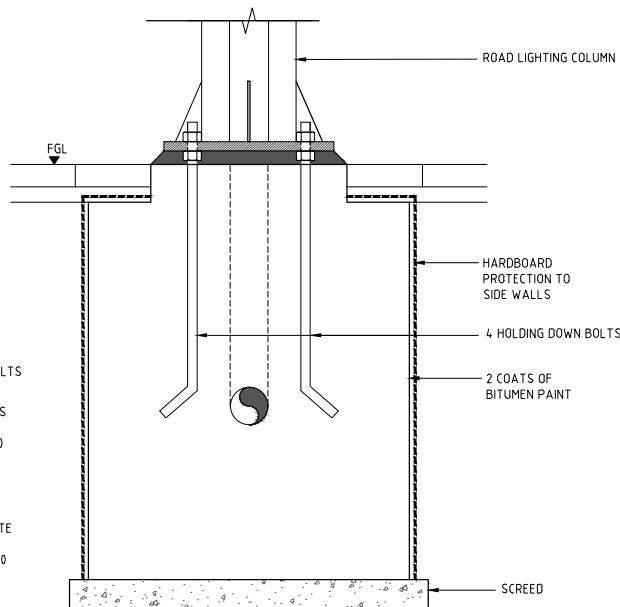
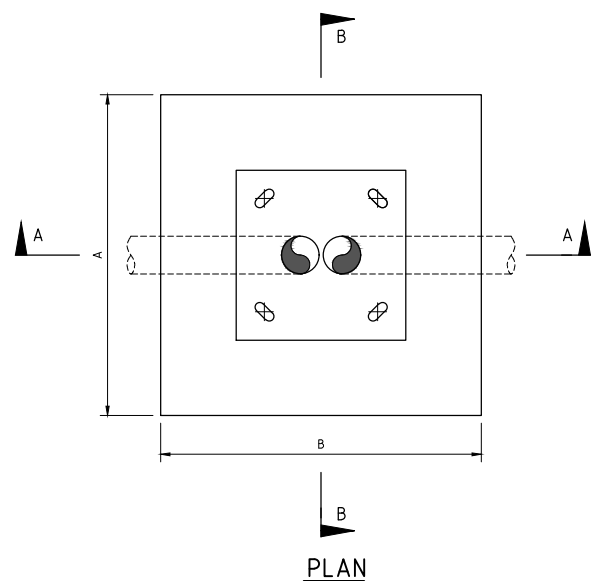


SECTION A - A



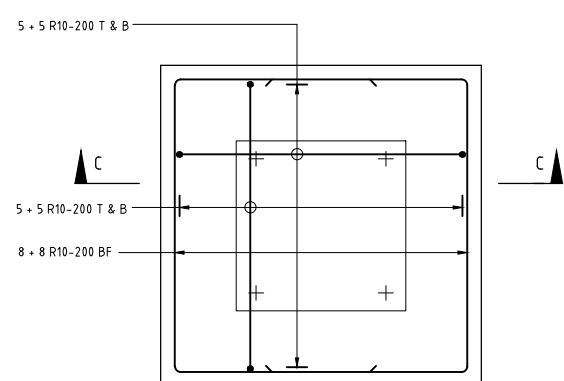
SECTION B - B



PLAN

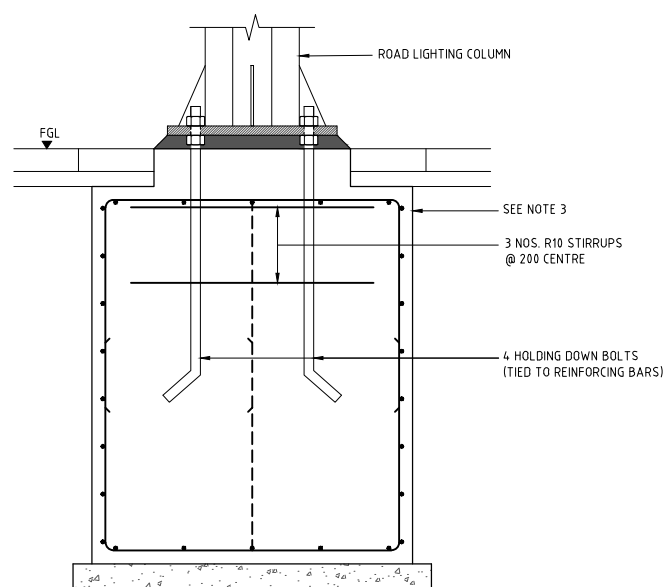
LIGHTING COLUMN HEIGHT (m)	A	B	C
8	750	750	1000
10	850	850	1000
12	1000	1000	1000

TYPICAL ROAD LIGHTING FOUNDATION DETAILS

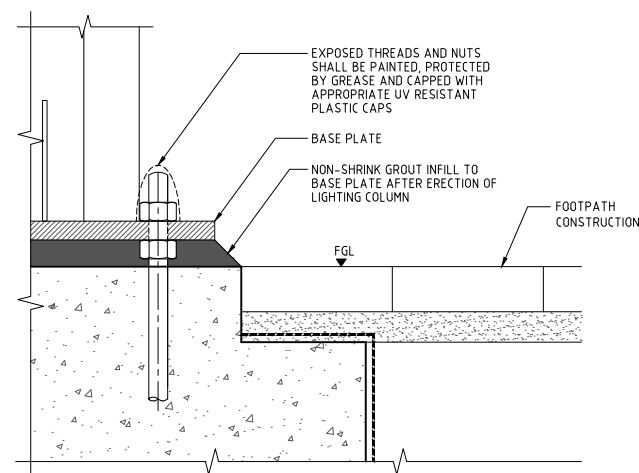


PLAN

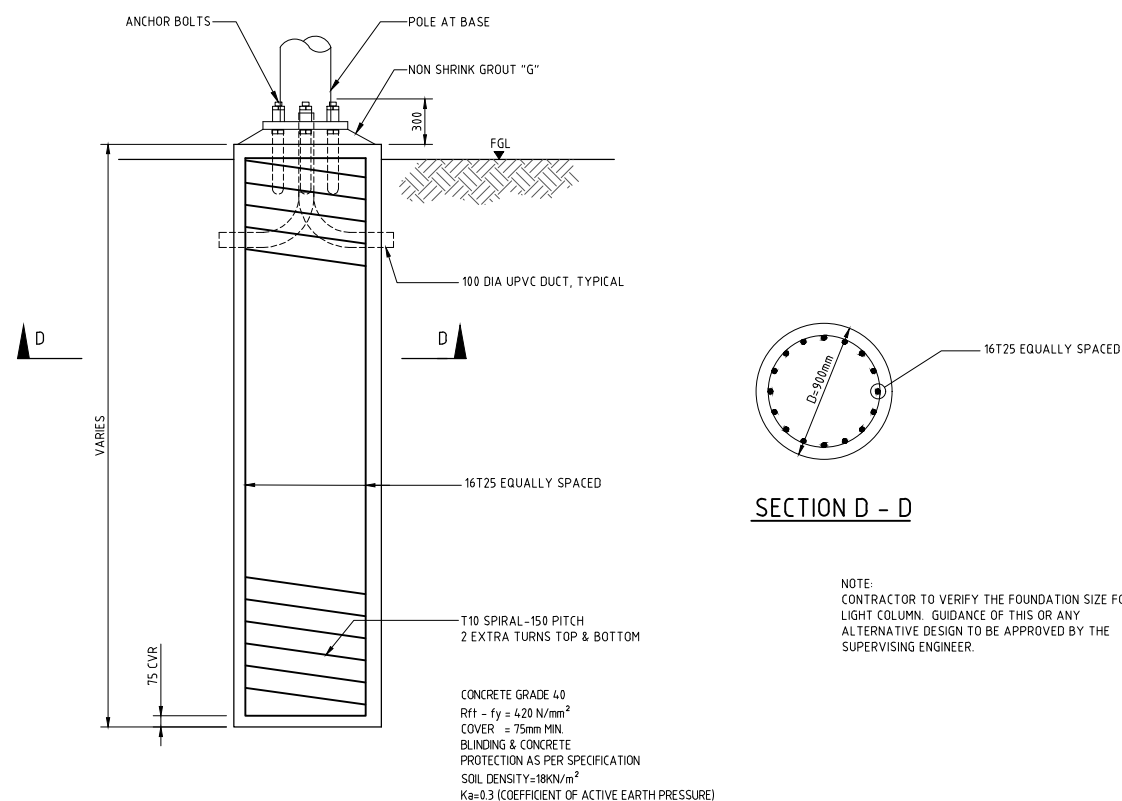
TYPICAL REINFORCEMENT DETAILS



SECTION C - C



DETAIL-X



SECTION D - D

NOTE:  
CONTRACTOR TO VERIFY THE FOUNDATION SIZE FOR LIGHT COLUMN. GUIDANCE OF THIS OR ANY ALTERNATIVE DESIGN TO BE APPROVED BY THE SUPERVISING ENGINEER.

OPTION 1: CIDH FOUNDATION DETAILS FOR ROAD LIGHTING COLUMN

## NOTES:

- ALL DIMENSIONS ARE IN MILLIMETRES UNLESS OTHERWISE STATED.
- ALL MATERIALS AND WORKMANSHIP SHALL BE IN ACCORDANCE WITH THE CURRENT Q.C.S. UNLESS OTHERWISE AGREED WITH THE ENGINEER.
- CONCRETE FOUNDATIONS SHALL COMPLY WITH THE RELEVANT SECTION OF THE CURRENT Q.C.S. AND MEET WITH THE COLUMN MANUFACTURER'S REQUIREMENTS.
- COLUMN FOUNDATION DETAILS FOR ALL COLUMNS TO BE CONFIRMED BY MANUFACTURER. THE DESIGN OF THE REINFORCEMENT DETAIL FOR THE COLUMN FOUNDATION SHALL BE BASED ON COMPLIANCE WITH THE REQUIREMENTS OF THE CONTRACT SPECIFICATION AND THE COLUMN MANUFACTURER'S RECOMMENDATIONS.
- FOUNDATION DETAILS FOR LIGHT COLUMNS GREATER THAN 12m TO BE RECOMMENDED BY COLUMN MANUFACTURER FOR THE CLIMATIC CONDITIONS.
- THE FOUNDATION DEPTH IS INDICATIVE. THE FOUNDATIONS ARE TO BE DESIGNED FOR ACTUAL FORCES GIVEN BY POLE MANUFACTURER AND FOR SOIL PARAMETERS AT SITE.
- FOUNDATIONS FOR PASSIVELY SAFE LIGHTING COLUMNS TO BE IN ACCORDANCE WITH BS EN 12767.
- FOUNDATION DIMENSIONS ARE DEPENDENT ON THE HEIGHT OF HIGH MAST COLUMN PLUS LUMINAIRE CONFIGURATION. THE CONTRACTOR SHALL PREPARE DETAILED CALCULATIONS AND WORKSHOP DRAWINGS TO DEMONSTRATE THE SUITABILITY OF THE PROPOSED FOUNDATION FOR LOCAL CONDITIONS.
- REINFORCEMENT DESIGNATIONS TO BS4466:1989 ALL REINFORCEMENT IS GRADE 460 TYPE 2 (T) UNLESS OTHERWISE NOTED.
- THE GAP BETWEEN BASE PLATE AND TOP FOUNDATION SHALL BE GROUTED. IT IS NOT ALLOWED THE VOID/GAP BETWEEN THE BASE PLATE AND TOP FOUNDATION. ALSO PROVIDE THE SAFETY CAP ON EACH BOLT AT THE TOP OF THE BASE.

Rev.	Date	Revision Details	Appd.
2	20JAN23	ISSUED FOR USE	
1	20MAR16	ISSUED FOR USE	
0	15SEP13	ISSUED FOR USE	

Public Works Authority  
P.O.Box 22188  
Tel.: (0974) 44950000  
Fax.: (0974) 44950999  
www.ashghal.gov.qa

**PA**  
PROJECTS AFFAIRS

QCS Section:  
Section 6 - Road Works  
Part 15 - Road Lighting

Drawing Title:

TYPICAL FOUNDATION  
DETAILS

Approved:	Sheet No: 1 OF 1
Date: MARCH 2016	Scale: N.T.S.
Drawing Number: SD 6-15-602	Revision: 2