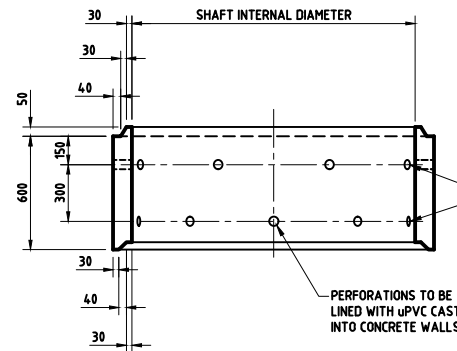
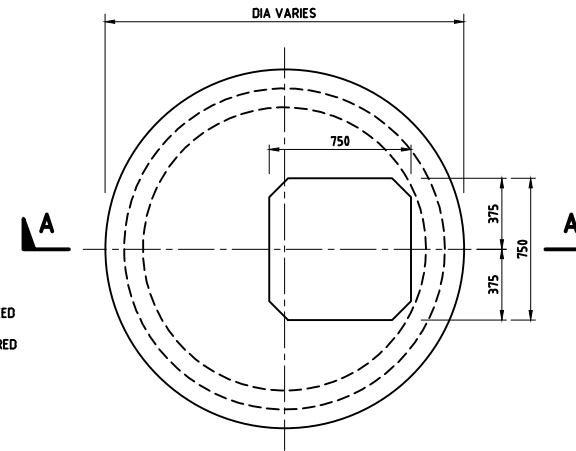


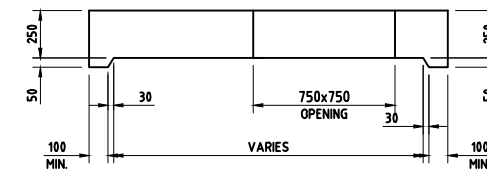
PLAN OF SOAKAWAY



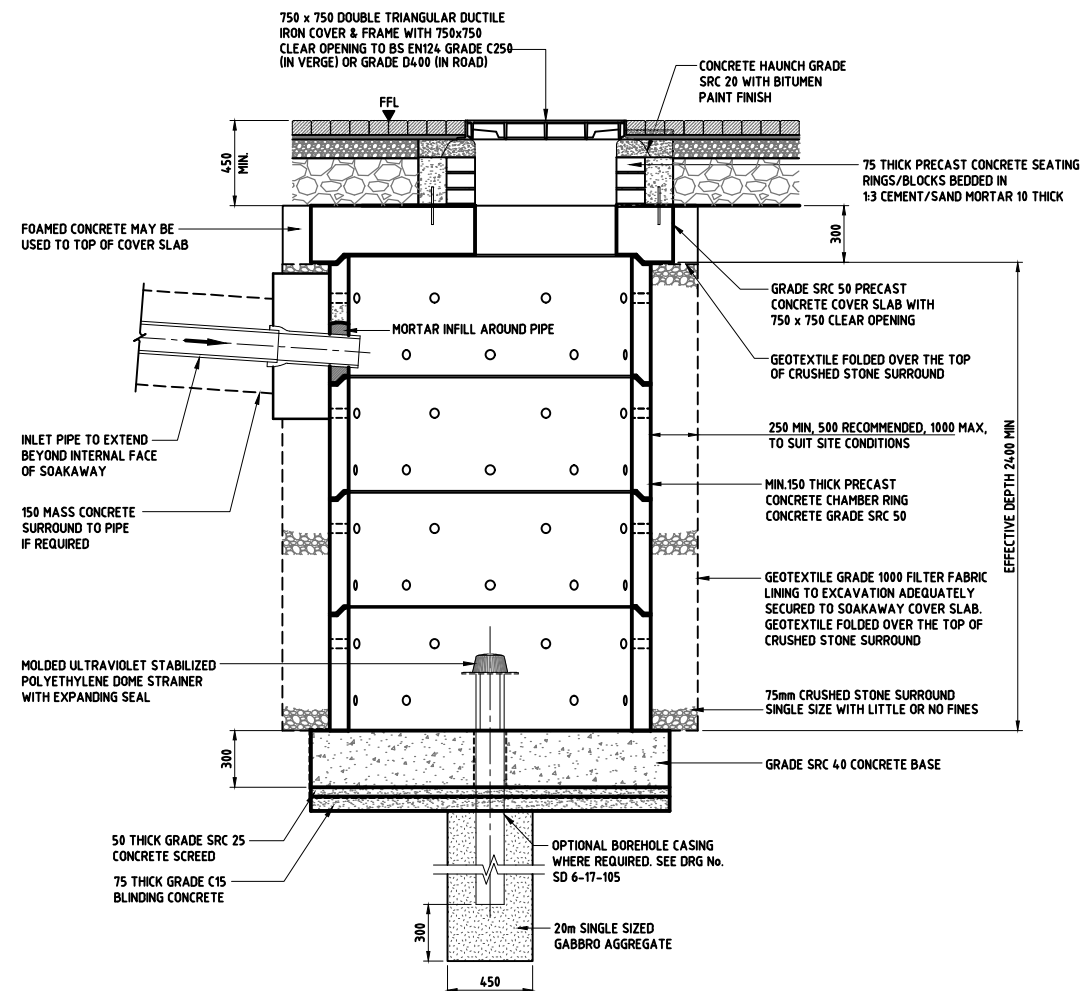
SECTION ON CHAMBER RING



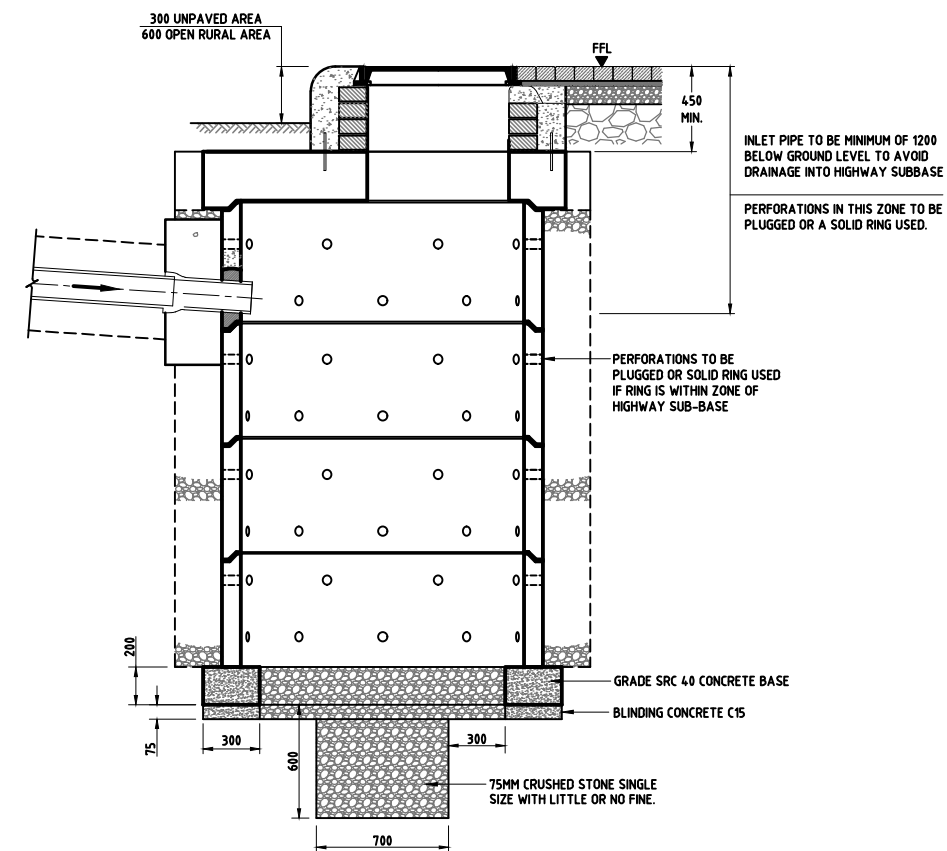
PLAN AT ROOF LEVEL



SECTION A-A
COVER SLAB FOR SOAKAWAY CHAMBER



STANDARD SOAKAWAY
WITH CONCRETE BASE



STANDARD SOAKAWAY
WITH CONCRETE BASE RING

NOTES:

1. ALL DIMENSIONS ARE IN MILLIMETRES UNLESS OTHERWISE STATED.
2. ALL MATERIALS AND WORKMANSHIP SHALL BE IN ACCORDANCE WITH THE CURRENT Q.C.S. UNLESS OTHERWISE AGREED WITH THE ENGINEER.
3. WHERE THERE IS A DISCREPANCY BETWEEN THE REQUIREMENTS IN THE SPECIFICATION AND THOSE SHOWN ON THIS DRAWING THE SPECIFICATION TAKE PRECEDENCE.
4. VARIATION TO STANDARD DETAILS ARE PERMISSIBLE TO MEET SITE SPECIFIC REQUIREMENTS SUBJECT TO ENGINEER'S APPROVAL.
5. ROCKER PIPE IS 600 IN LENGTH OR 15xD WHICHEVER IS GREATER.
6. D.I. MANHOLE COVERS SHALL BE BADGED 'SURFACE WATER' IN ENGLISH AND ARABIC.
7. STRUCTURAL DESIGN OF COVER SLABS SHALL BE BY CONTRACTOR.
8. CHAMBER TO BE DESIGNED FOR FULL HIGHWAY LOADING.
9. ALL REINFORCEMENT TO BE HIGH YIELD DEFORMED TYPE 2, GRADE 500N/mm². BARS TO BS 4449:2005.
10. SOAKAWAY MAY BE USED WHEN GEOTECHNICAL INVESTIGATIONS CONFIRM SUITABILITY OF GROUND CONDITIONS, INFILTRATION CALCULATIONS TO BE SUBMITTED FOR APPROVAL.
11. SEE SD 8-4-106 FOR STRUCTURAL NOTES AND DETAILS.
12. ALL INTERNAL AND EXTERNAL SURFACES OF PRECAST UNITS TO HAVE TWO COATS OF SOLVENT FREE EPOXY PAINT.POLYMER RESIN CONCRETE SOAKAWAY AS NOT REQUIRE EPOXY PAINT.

| | | | |
|------|-----------|------------------|-------|
| 4 | APR 19 | ISSUED FOR USE | |
| 3 | 01 MAR 19 | UPDATED ISSUE | |
| 2 | 01MAY16 | ISSUED FOR USE | |
| 1 | 01DEC15 | ISSUED FOR USE | |
| 0 | 15SEP13 | ISSUED FOR USE | |
| Rev. | Date | Revision Details | Appd. |

هيئة الأشغال العامة
Public Works Authority

P.O.Box: 22188
Tel.: 00974 44950000
Fax: 00974 44950999

قطر تستحق الأفضل
Qatar Deserves The Best
www.ashghal.gov.qa

PROJECTS AFFAIRS

QCS Section: Section 6 - Road Works
Part 17 - Road Drainage

| | |
|-----------------------------|------------------|
| Drawing Title: | |
| SOAKAWAY DETAILS | |
| Approved: | Sheet No: 1 OF 1 |
| Date: APRIL 2019 | Scale: N.T.S. |
| Drawing Number: SD 6-17-104 | Revision: 4 |