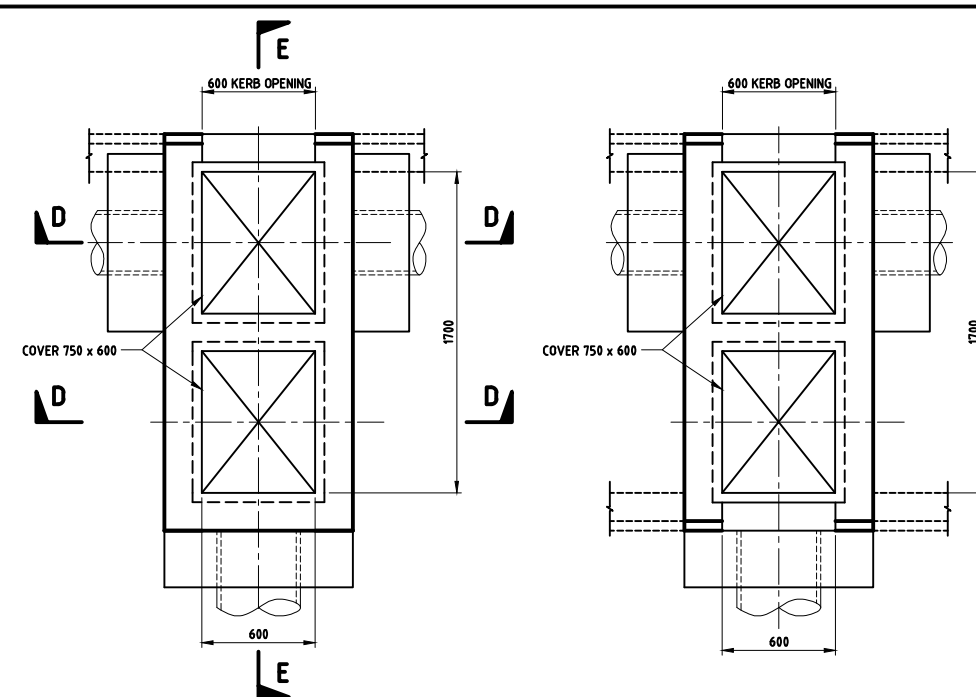


**CATCH BASIN TYPE-1**  
( KERB ON ONE SIDE ONE KERB OPENING )

**CATCH BASIN TYPE-7**  
( KERB ON ONE SIDE NO KERB OPENING )

**CATCH BASIN TYPE-2**  
( KERB ON TWO SIDES ONE KERB OPENING )

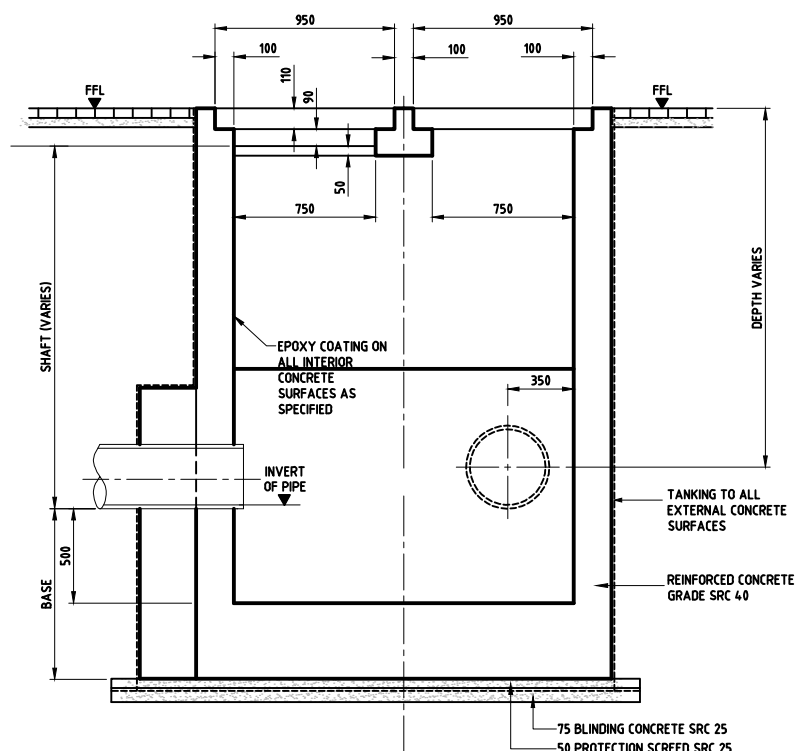
**CATCH BASIN TYPE-3**  
( KERB ON TWO SIDES TWO KERB OPENING )



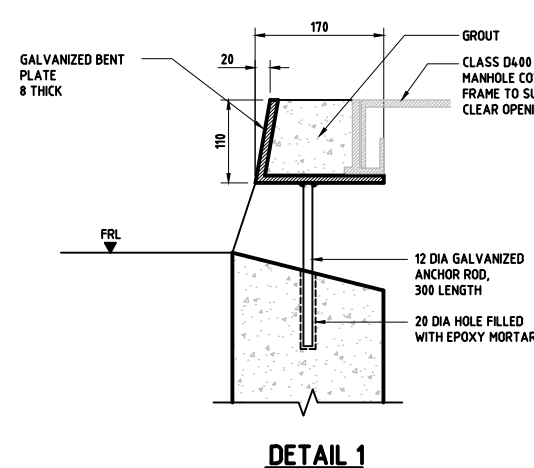
**CATCH BASIN TYPE-4**  
( KERB ON ONE SIDE ONE KERB OPENING )

**CATCH BASIN TYPE-5**  
( KERB ON ONE SIDE NO KERB OPENING )

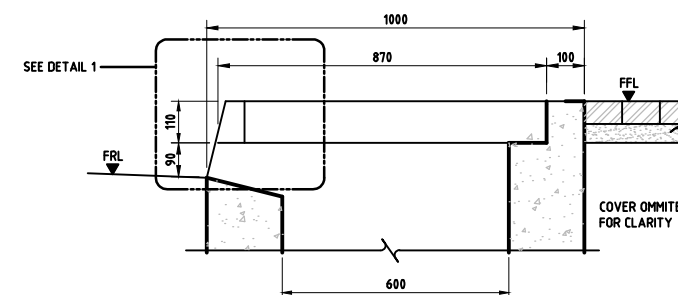
**CATCH BASIN TYPE-6**  
( KERB ON TWO SIDE TWO KERB OPENING )



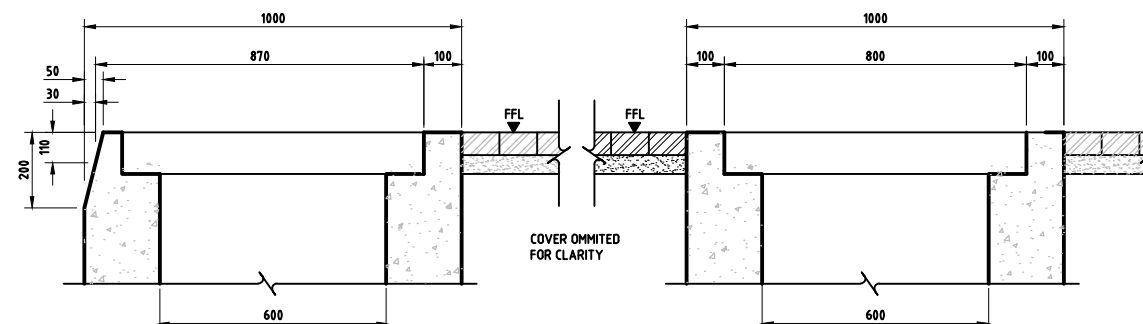
**SECTION A-A**



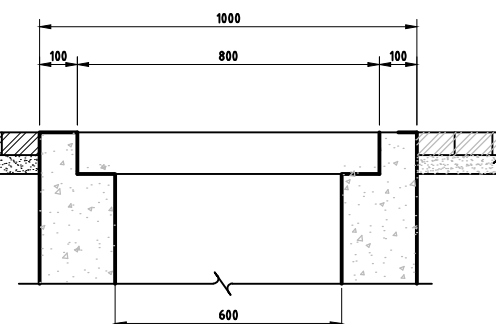
**DETAIL 1**



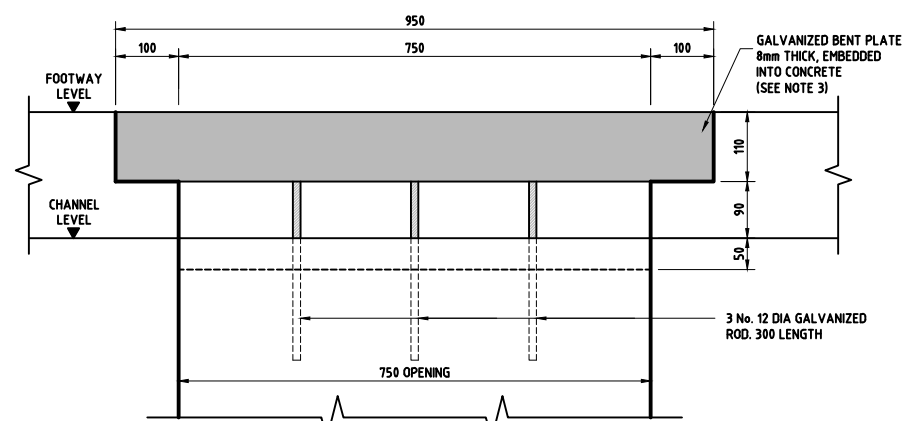
**SECTION B-B**



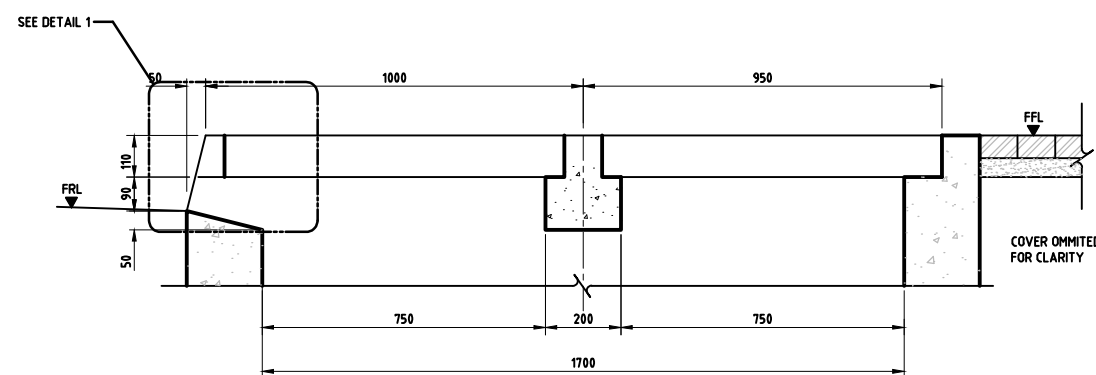
**SECTION C-C**



**SECTION D-D**



**KERB IN-FILL SUPPORT AT OPENING**  
SEE NOTE 3



**SECTION E-E**

#### NOTES:

1. ALL DIMENSIONS ARE IN MILLIMETRES UNLESS OTHERWISE STATED.
2. ALL MATERIALS AND WORKMANSHIP SHALL BE IN ACCORDANCE WITH THE CURRENT Q.C.S. UNLESS OTHERWISE AGREED WITH THE ENGINEER.
3. DUCTILE IRON COVERS OR GRATING AND FRAMES ARE TO BE IN ACCORDANCE WITH B.S. EN124. ALTERNATIVELY, SINGLE UNIT CONTAINING DUCTILE IRON COVER, FRAME AND GRATE FOR KERB INLET MANUFACTURED TO BS EN 124- D400 CAN BE SUBMITTED FOR APPROVAL.
4. ALL EXTERNAL FACES OF CONCRETE BELOW GROUND TO BE TANKED REFER TO DRAWING No. SD 8-4-103.

#### LEGEND:

- FRL FINISHED ROAD LEVEL  
FFL FINISHED FOOTWAY LEVEL  
SRC SULFATE RESISTING CONCRETE

5	OCT 19	ISSUED FOR USE	
4	APR 19	ISSUED FOR USE	
3	01 MAR 19	REVALIDATED ISSUE	
2	01 MAY 16	ISSUED FOR USE	
1	01 DEC 15	ISSUED FOR USE	
0	15 SEP 13	ISSUED FOR USE	
Rev.	Date	Revision Details	Appd.

هيئة الأشغال العامة  
Public Works Authority

P.O. Box: 22188  
Tel.: 00974 44950000  
Fax: 00974 44950999

**PA**  
PROJECTS AFFAIRS

قطر تستحق الأفضل  
Qatar Deserves The Best  
www.ashghal.gov.qa

QCS Section:  
Section 6 - Road Works  
Part 17 - Road Drainage

Drawing Title:  
**CATCH BASIN DETAILS**

Approved:	Sheet No: 1 OF 1
Date: OCT 2019	Scale: N.T.S.
Drawing Number: SD 6-17-106	Revision: 5