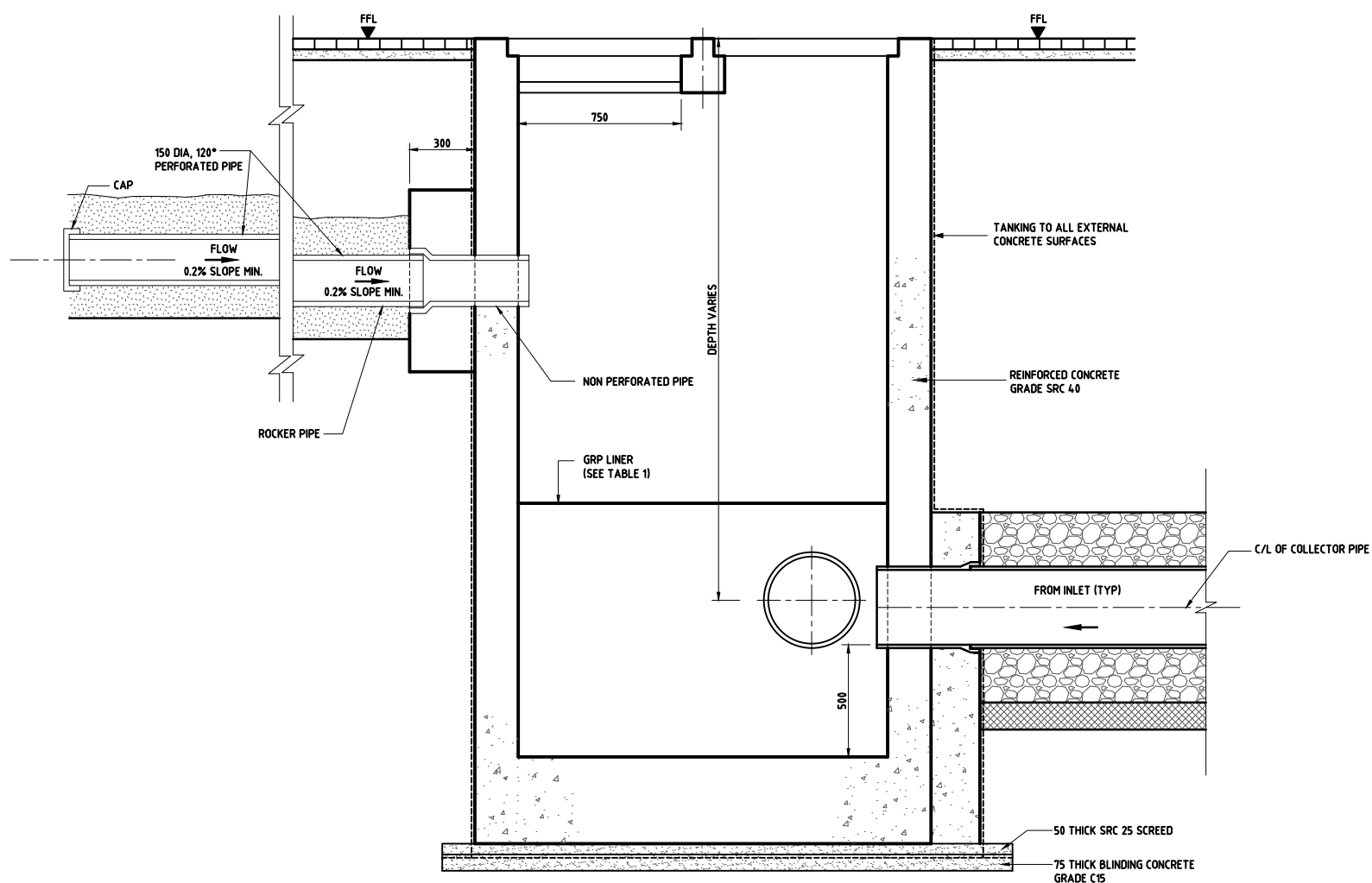
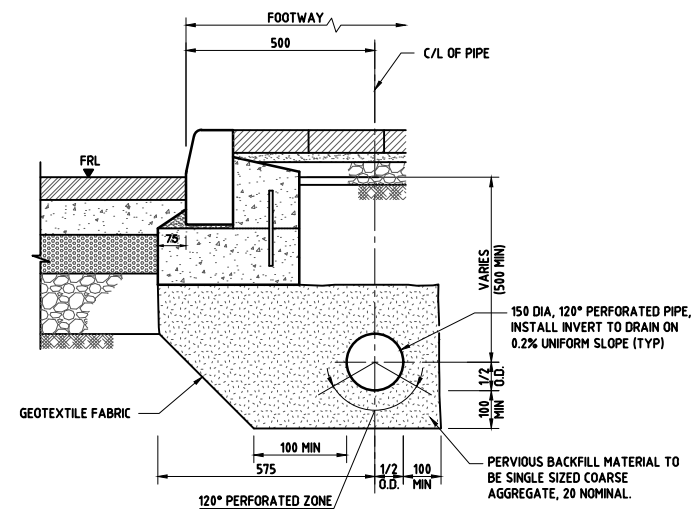


PLAN VIEW



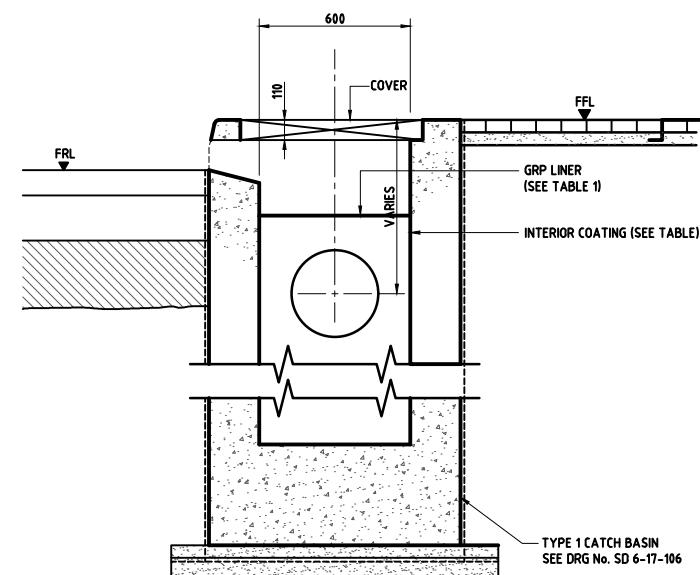
**SECTION A - A
TYPICAL ELEVATION
PAVEMENT SUBBASE DRAINAGE INSTALLATION**



**SECTION C - C
TYPICAL SECTION FOR ASPHALT ROADS
(SHOWN WITH ASPHALT PAVING, ALSO APPLICABLE FOR INTERLOCKING VEHICULAR PAVERS)**

TABLE-1

INTERNAL LININGS	
CONCRETE MANHOLES	GRP LINER TO WALLS AND BENCHING TO 300mm ABOVE INLET PIPE CROWN LEVEL THEN 2 COATS OF SOLVENT FREE EPOXY PAINT TO ALL REMAINING INTERNAL SURFACES
POLYMER RESIN CONCRETE (PRC) MANHOLES, PRECAST MANHOLES ONLY	NO LINING TO WALLS AND COVER SLAB REQUIRED. IF PRC NOT USED FOR BENCHING, GRP LINING TO BENCHING TO BE USED AS PER QCS.



**SECTION B - B
TYPICAL SECTION FOR MAIN ROADS
CATCH BASIN TYPE -1**

NOTES:

- ALL DIMENSIONS ARE IN MILLIMETRES UNLESS OTHERWISE STATED.
- ALL MATERIALS AND WORKMANSHIP SHALL BE IN ACCORDANCE WITH THE CURRENT Q.C.S. UNLESS OTHERWISE AGREED WITH THE ENGINEER.
- DUCTILE IRON COVERS OR GRATING AND FRAMES ARE TO BE IN ACCORDANCE WITH B.S. EN124. ALTERNATIVELY, SINGLE UNIT CONTAINING DUCTILE IRON COVER, FRAME AND GRATE FOR KERB INLET MANUFACTURED TO BS EN 124 D400 CAN BE SUBMITTED FOR APPROVAL.
- ALL EXTERNAL FACES OF CONCRETE BELOW GROUND TO BE TANKED. REFER TO DRG. No SD 8-4-103.
- SEE DRAWING No. SD 6-17-106 FOR CATCH BASIN DETAILS.

LEGEND:

- FFL FINISHED FOOTWAY LEVEL
FRL FINISHED ROAD LEVEL

5	OCT 19	ISSUED FOR USE	
4	APR 19	ISSUED FOR USE	
3	01 MAR 19	REVALIDATED ISSUE	
2	01 MAY 16	ISSUED FOR USE	
1	01 DEC 15	ISSUED FOR USE	
0	15 SEP 13	ISSUED FOR USE	

Rev.	Date	Revision Details	Appd.
------	------	------------------	-------

هيئة الأشغال العامة
Public Works Authority

P.O. Box: 22188
Tel.: 00974 44950000
Fax: 00974 44950999

PA
PROJECTS AFFAIRS

قطر تستحق الأفضل
Qatar Deserves The Best
www.ashghal.gov.qa

QCS Section:
Section 6 - Road Works
Part 17 - Road Drainage

Drawing Title:
**PAVEMENT SUBBASE
DRAINAGE DETAILS**

Approved:	Sheet No: 1 OF 1
Date: OCT 2019	Scale: N.T.S.
Drawing Number: SD 6-17-108	Revision: 5