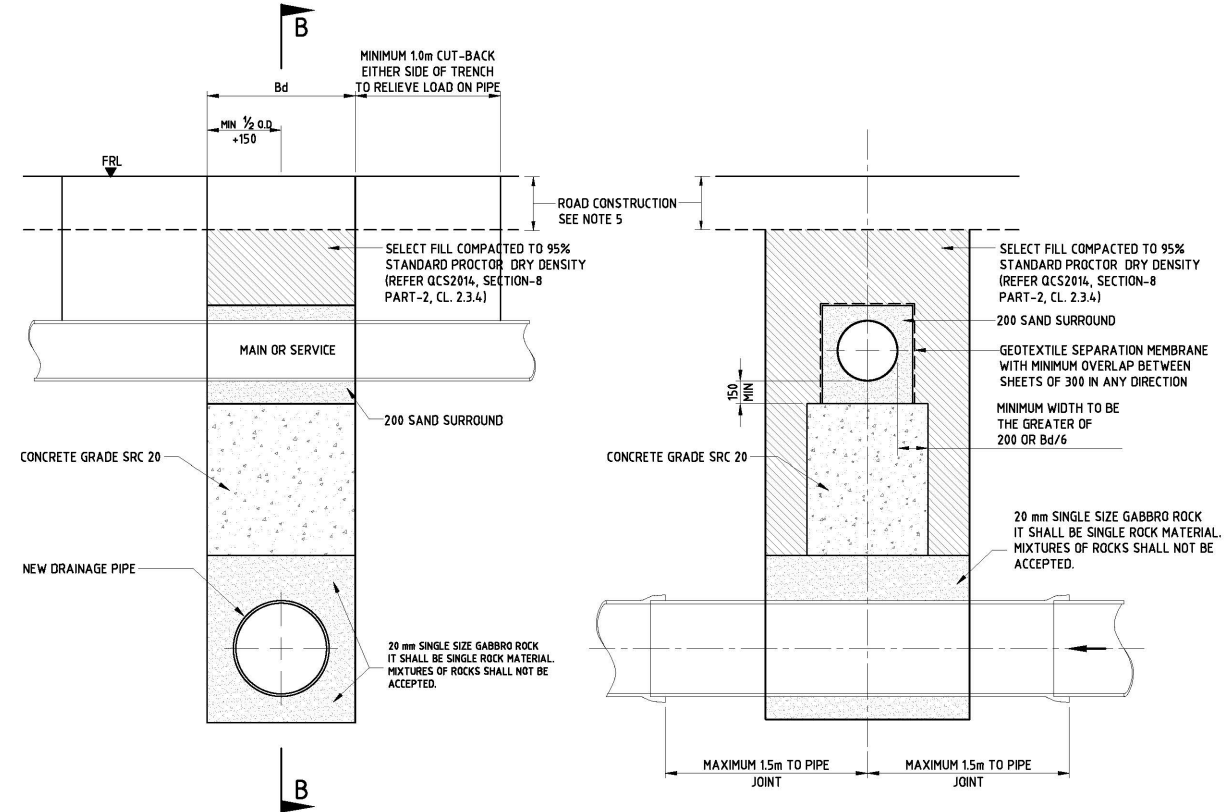


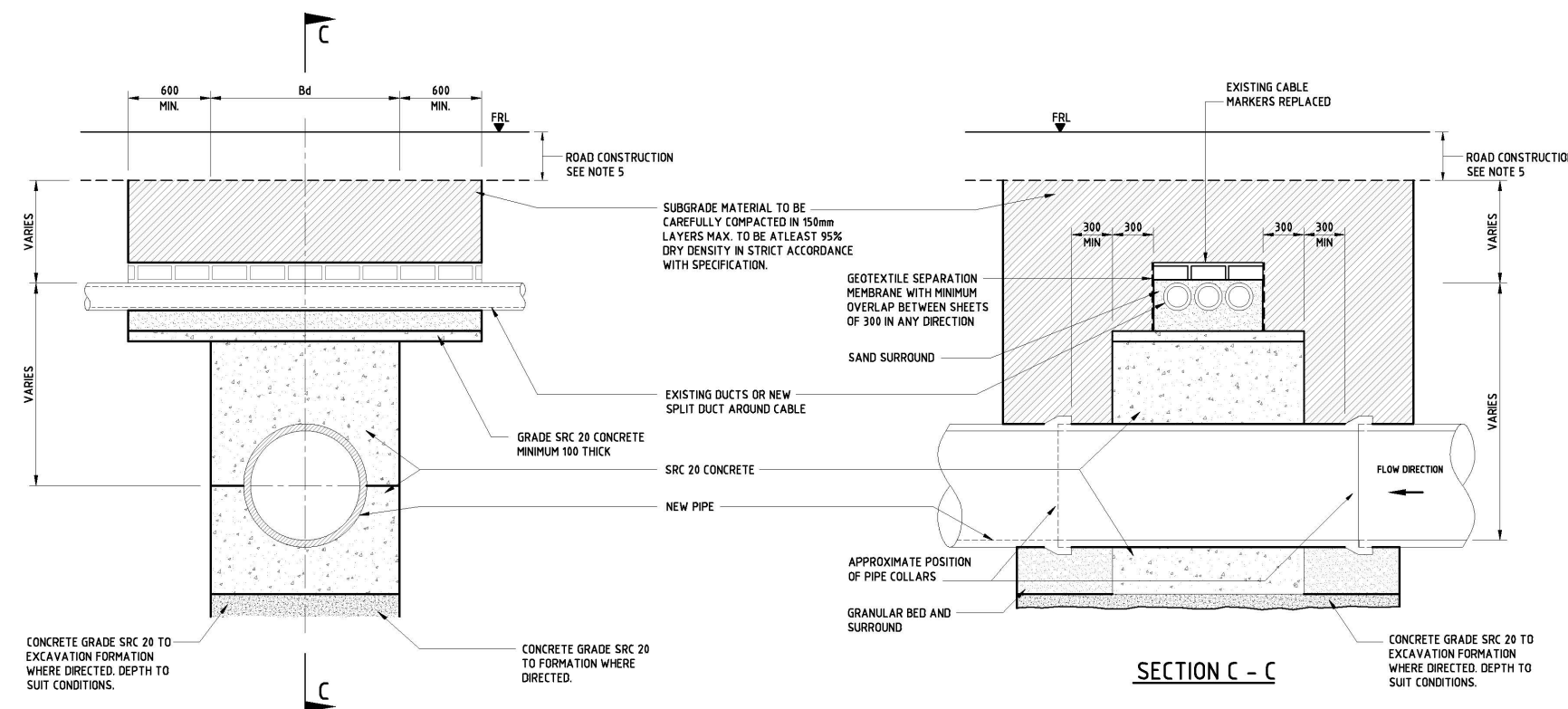
SECTION A - A

PERMANENT SUPPORT TO MAINS AND SERVICES



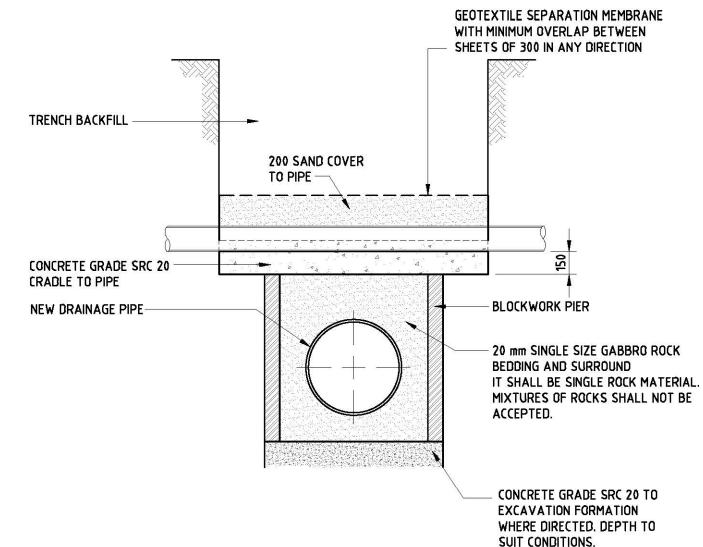
SECTION B - B

ALTERNATIVE METHOD OF SUPPORT



SECTION C - C

PERMANENT SUPPORT TO HV ELECTRICITY CABLES



SHALLOW PIPE CROSSING

NOTES:

1. ALL DIMENSIONS ARE IN MILLIMETRES UNLESS OTHERWISE STATED.
2. ALL MATERIALS AND WORKMANSHIP SHALL BE IN ACCORDANCE WITH THE CURRENT Q.C.S. UNLESS OTHERWISE AGREED WITH THE ENGINEER.
3. METHOD OF PERMANENT SUPPORT TO BE CONFIRMED BY UTILITY OWNER/PROVIDER.
4. PROVIDE MARKER TAPE ABOVE PIPELINES AND UTILITIES IN ACCORDANCE WITH THE Q.C.S.
5. SEE REINSTATEMENT DETAIL DRAWINGS SD 6-1-201 TO SD 6-1-205 FOR CONSTRUCTION IN EXISTING PAVEMENT. THESE REINSTATEMENT DRAWINGS ARE NOT APPLICABLE FOR NEW ROAD CONSTRUCTION.
6. GEOTEXTILE SHALL BE NONWOVEN NEEDLE-PUNCHED GEOTEXTILE MANUFACTURED FOR SUBSURFACE DRAINAGE APPLICATIONS AS PER QCS 2014, SECTION 6, PART 18, CLAUSE 18.2.2

LEGEND:

FRL FINISHED ROAD LEVEL

8	JULY 24	REPLACE IGNEOUS OR METAMORPHIC WITH GABBRO	
7	FEB 22	REPLACE GABBRO WITH IGNEOUS OR METAMORPHIC	
6	MAR 21	GABBRO, BACKFILL TEXT MODIFIED	
5	MAR 20	NOTE ON GEOTEXTILE ADDED	
4	APR 19	ISSUED FOR USE	
3	01 MAR 19	REVALIDATED ISSUE	
2	04 APR 16	ISSUED FOR USE	
1	01 DEC 15	ISSUED FOR USE	
0	15 SEP 13	ISSUED FOR USE	
Rev.	Date	Revision Details	Appd.

هيئة الأشغال العامة
Public Works Authority

P.O. Box: 22188
Tel.: 00974 44950000
Fax: 00974 44950999

قطر تستحق الأفضل
Qatar Deserves The Best
www.ashghal.gov.qa

PROJECTS AFFAIRS
QCS Section:
Section 8 - Drainage Works
Part 2 - Earthworks

Drawing Title:
**MAINS AND SERVICES
SUPPORT DETAILS
IN TRENCHES**

Approved:	Sheet No: 1 OF 1
Date: MARCH 2021	Scale: 1:25 on A1
Drawing Number: SD 8-2-306	Revision: 8