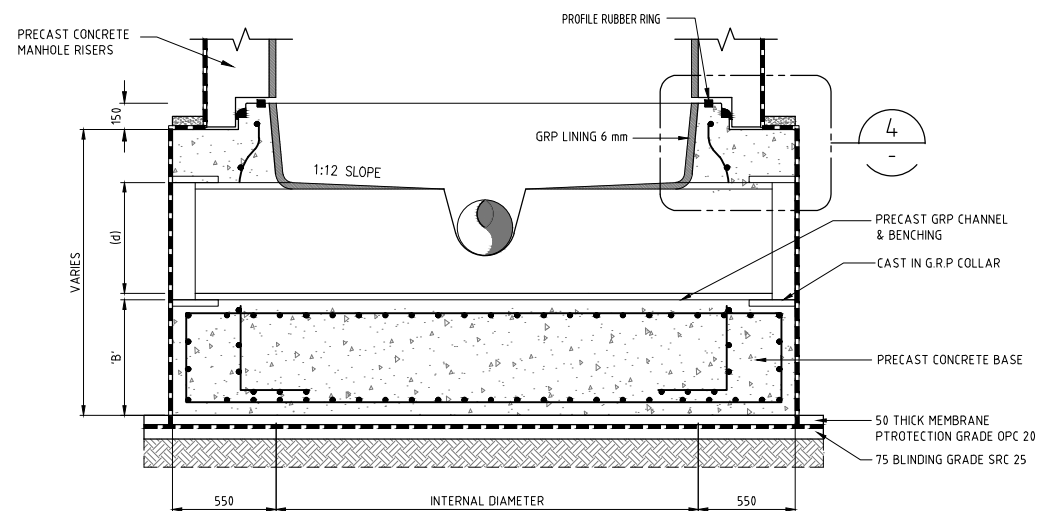
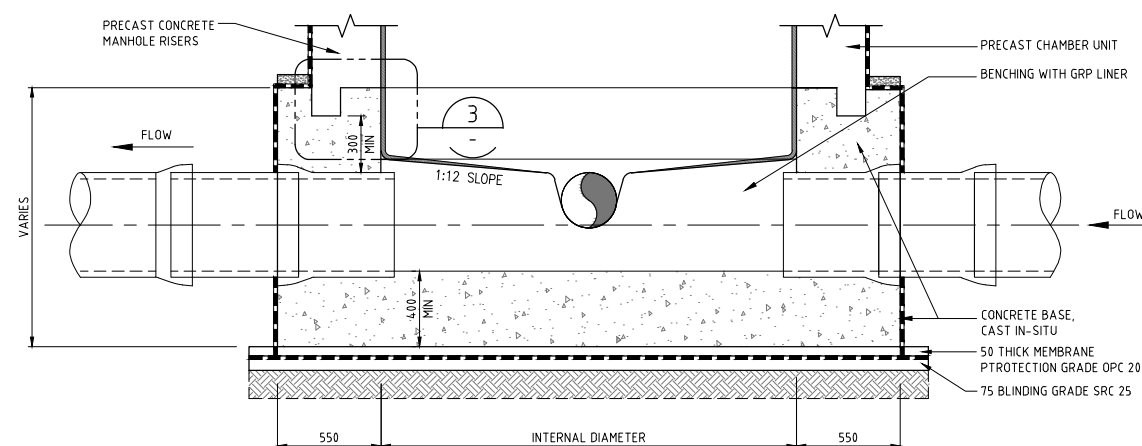


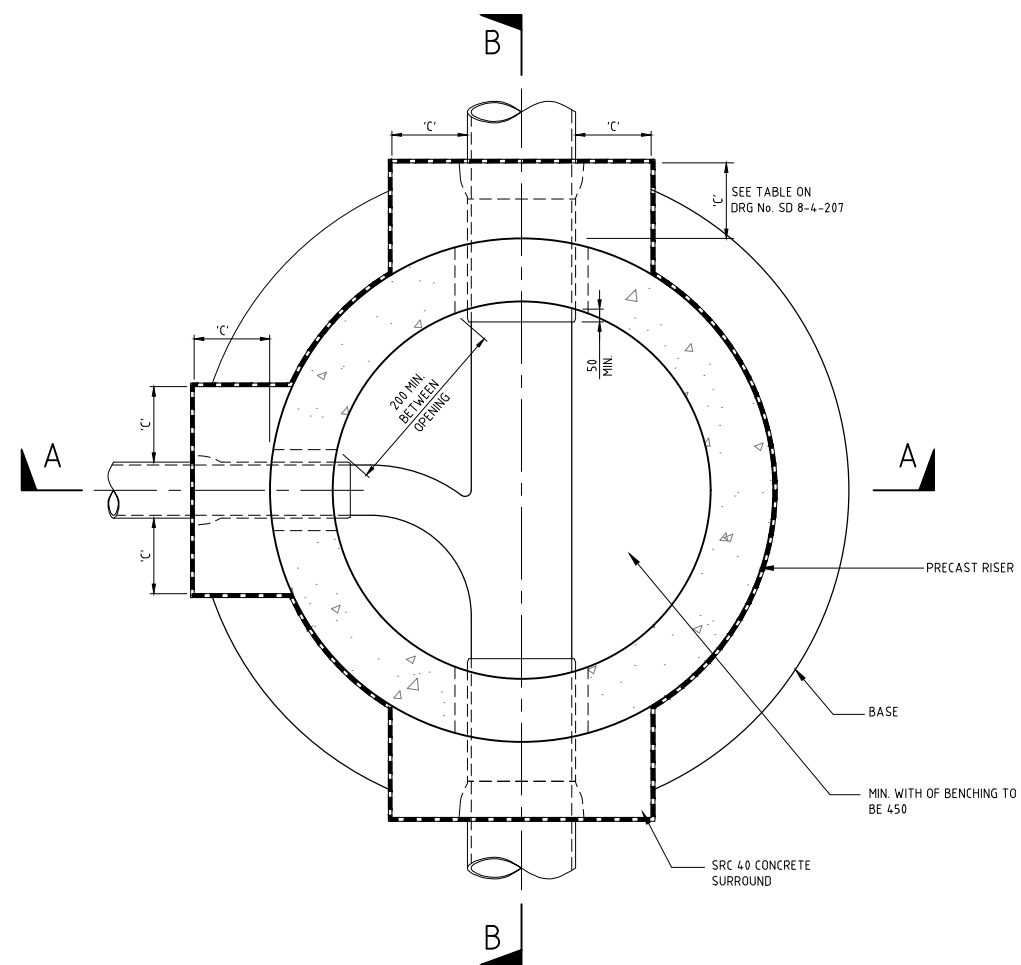
SECTION A - A
MANHOLE BASE



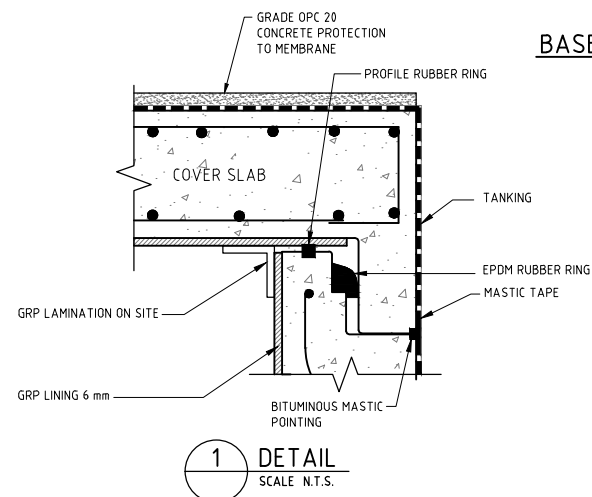
SECTION B - B
OPTIONAL PRECAST BENCH AND CONNECTIONS



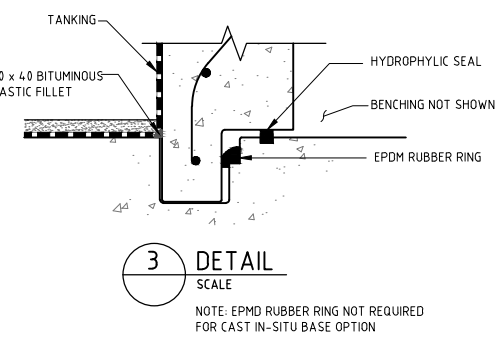
SECTION B - B
OPTIONAL CAST IN-SITU BASE



BASE PLAN VIEW

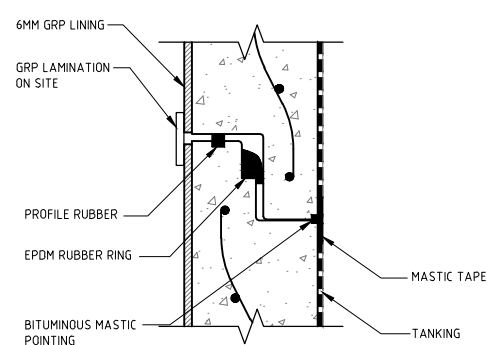


1 DETAIL
SCALE N.T.S.

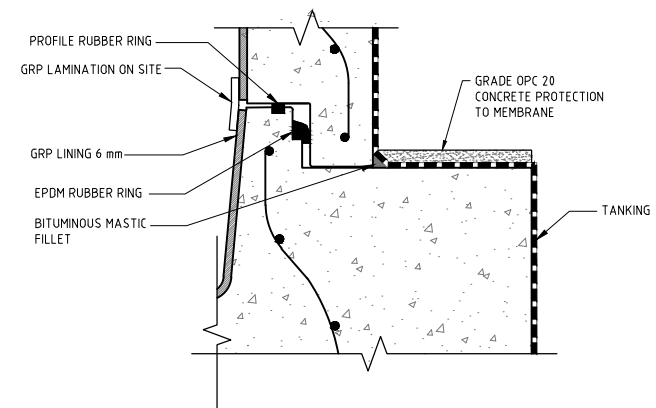


3 DETAIL
SCALE

NOTE: EPDM RUBBER RING NOT REQUIRED FOR CAST IN-SITU BASE OPTION



2 DETAIL
SCALE



4 DETAIL
SCALE

NOTES:

- ALL DIMENSIONS ARE IN MILLIMETRES UNLESS OTHERWISE STATED.
- ALL MATERIALS AND WORKMANSHIP SHALL BE IN ACCORDANCE WITH THE CURRENT Q.C.S. UNLESS OTHERWISE AGREED WITH THE ENGINEER.
- SEE DRAWING NO. SD 8-4-106 FOR STRUCTURAL NOTES AND DETAILS.
- ALL EXTERNAL FACES OF CONCRETE TO BE TANKED AS SHOWN ON DRG. NO. SD 8-4-103.
- ALL INTERNAL SURFACES OF MANHOLES TO BE LINED WITH GRP LINER AS SPECIFIED.
- FOR DETAILS OF BENCHING & BRANCH PIPES SEE DRG NO. SD 8-4-201.
- ALL CONCRETE COVER FOR REINFORCEMENT TO BE 75mm.
- LIFTING HOOKS TO BE REMOVED AND GROUTED PRIOR TO TANKING OR LINING.
- ALL MANHOLES SHALL BE DESIGNED CONSTRUCTED OF REINFORCED CONCRETE AND DESIGNED TO SUIT INDIVIDUAL PROJECT REQUIREMENTS. SHOP DRAWINGS SUBMITTAL SHALL DETAIL ALL PIPE PENETRATIONS, PIPE LAYOUTS, JOINT, AND REINFORCEMENT DETAILS.
- STABILITY CHECKS TO BE UNDERTAKEN IN ACCORDANCE WITH INDIVIDUAL PROJECT REQUIREMENTS. WALL AND BASE SLAB THICKNESS MAY BE INCREASED TO RESIST FLOATATION FOR DEEP MANHOLES.
- ALL STRUCTURAL CONCRETE SHALL BE SRC 50 IN ACCORDANCE WITH CURRENT QCS.
- PIPE OPENINGS WILL NOT BE PERMITTED THROUGH JOINT. DISTANCE FROM TOP OR BOTTOM OF ANY CAST OPENING SHALL BE A MINIMUM OF 150 PLUS JOINT DEPTH.
- ALL INCOMING PIPES SHALL BE LAID SOFFIT TO SOFFIT WITH THE OUTGOING PIPE UNLESS A RAMP/BACKDROP IS CONSTRUCTED.
- FOR BACKDROP CONNECTIONS SEE DRG No. SD 8-4-209.
- PRECAST CONCRETE MANHOLES TO BE IN ACCORDANCE WITH BS EN 1917:2002
- ALL JOINTS FOR PRECAST MANHOLE TO BE IN ACCORDANCE WITH ASTM C443.
- ALL PRECAST MANHOLES TO BE SUPPLIED BY ASHGHAL APPROVED MANUFACTURERS.

LEGEND:

GRP GLASS REINFORCED PLASTIC

3	APR 19	ISSUED FOR USE	
2	01 MAR 19	REVALIDATED ISSUE	
1	23NOV15	ISSUED FOR USE	
0	15SEP13	ISSUED FOR USE	

Rev.	Date	Revision Details	Appd.
------	------	------------------	-------

هيئة الأشغال العامة
Public Works Authority

P.O. Box: 22188
Tel.: 00974 44950000
Fax: 00974 44950999

قطر تستحق الأفضل
Qatar Deserves The Best
www.ashghal.gov.qa

PROJECTS AFFAIRS
QCS Section:
Section 8 - Drainage Works
Part 4 - Pipeline Installation

Drawing Title:
**FOUL SEWER
PRECAST MANHOLE
BASE DETAIL**

Approved:	Sheet No: 1 OF 1
Date: APRIL 2019	Scale: N.T.S.
Drawing Number: SD 8-4-208	Revision: 3