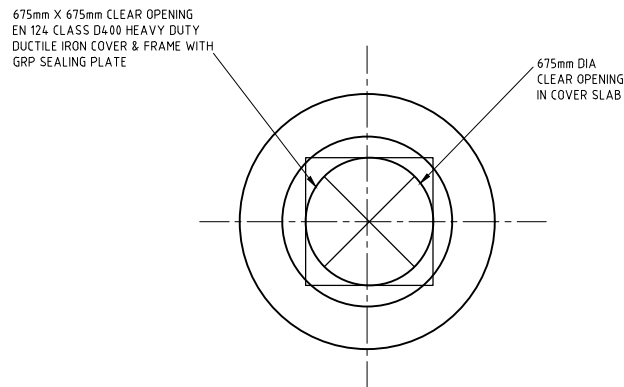
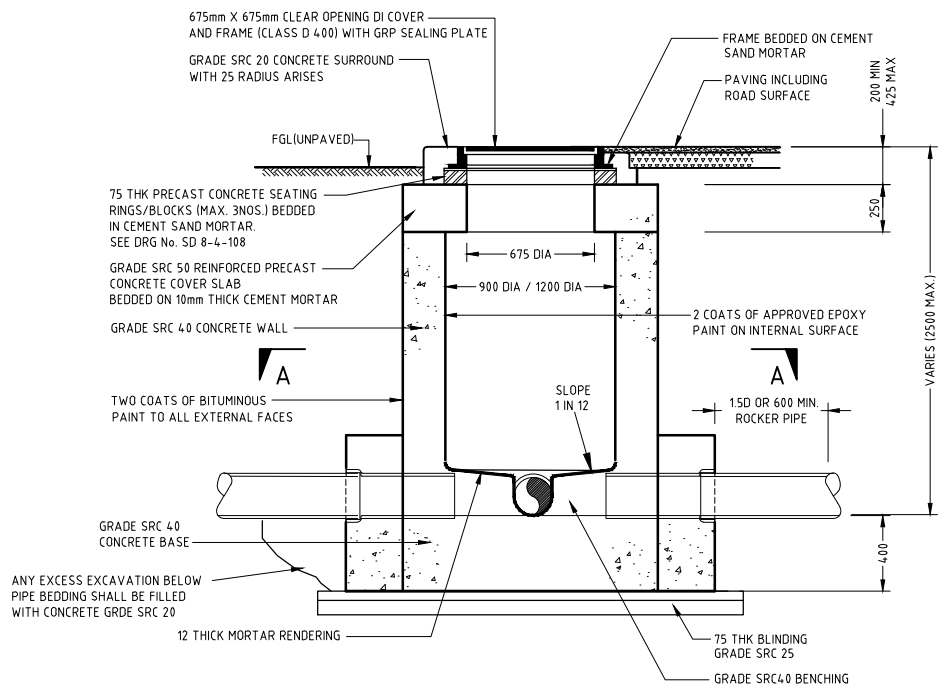


SECTION A-A  
N.T.S.



PLAN ON COVER SLAB  
N.T.S.



SECTION B-B  
N.T.S.

MH1 MANHOLE DETAILS				
OUTLET PIPE DIAMETER	CHAMBER DIA	BASE SLAB THICKNESS	WALL THICKNESS	DEPTH RANGE TO INVERT
200/300	900	400	225	UP TO 1.5m
200/300*	1200	400	250	>1.5m<=2.5m

\* WHEN POPULATION EQUIVALENT EXCEEDS 500

NOTES:

1. ALL DIMENSIONS ARE IN MILLIMETRES UNLESS OTHERWISE STATED.
2. ALL MATERIALS AND WORKMANSHIP SHALL BE IN ACCORDANCE WITH THE CURRENT Q.C.S. UNLESS OTHERWISE AGREED WITH THE ENGINEER.
3. WHERE THERE IS A DISCREPANCY BETWEEN THE REQUIREMENTS IN THE SPECIFICATION AND THOSE SHOWN ON THIS DRAWING THE SPECIFICATION SHALL BE FOLLOWED UNLESS DIRECTED OTHERWISE BY THE ENGINEER.
4. VARIATION TO STANDARD DETAILS ARE PERMITTED TO MEET SITE SPECIFIC REQUIREMENTS SUBJECT TO THE APPROVAL OF THE ENGINEER.
5. ALL JOINTS BETWEEN PIPES AND CONCRETE SHALL BE WATERTIGHT.
6. ROCKER PIPE SHALL BE 600mm IN LENGTH OR 1.5 x D WHICHEVER IS GREATER.
7. INTERNAL SURFACES OF MANHOLES SHALL BE PAINTED WITH TWO COATS OF APPROVED EPOXY PAINT. ALL EXTERNAL SURFACES SHALL BE PAINTED WITH TWO COATS OF APPROVED BITUMINOUS PAINT.
8. ALL INCOMING AND THE OUT GOING PIPES SHALL BE LAID SOFFIT TO SOFFIT.
9. CONTRACTOR SHALL SUBMIT DESIGN CALCULATIONS AND SHOP DRAWINGS FOR THE APPROVAL OF THE ENGINEER.

5	JUN 22	ISSUED FOR USE	
4	OCT 19	ISSUED FOR USE	
3	APR 19	ISSUED FOR USE	
2	01 MAR 19	REVALIDATED ISSUE	
1	23NOV15	ISSUED FOR USE	
0	15SEP13	ISSUED FOR USE	
Rev.	Date	Revision Details	Appd.

هيئة الأشغال العامة  
Public Works Authority

P.O.Box: 22188  
Tel.: 00974 44950000  
Fax: 00974 44950999

قطر تستحق الأفضل  
Qatar Deserves The Best  
www.ashghal.gov.qa

QCS Section:  
Section 8 - Drainage Works  
Part 4 - Pipeline Installation

Drawing Title:  
  
MANHOLE 1 (MH1)  
DETAILS  
CAST IN SITU

Approved:	Sheet No:	1 OF 1
Date:	Scale:	N.T.S
Drawing Number:	Revision:	

SD 8-4-212

5