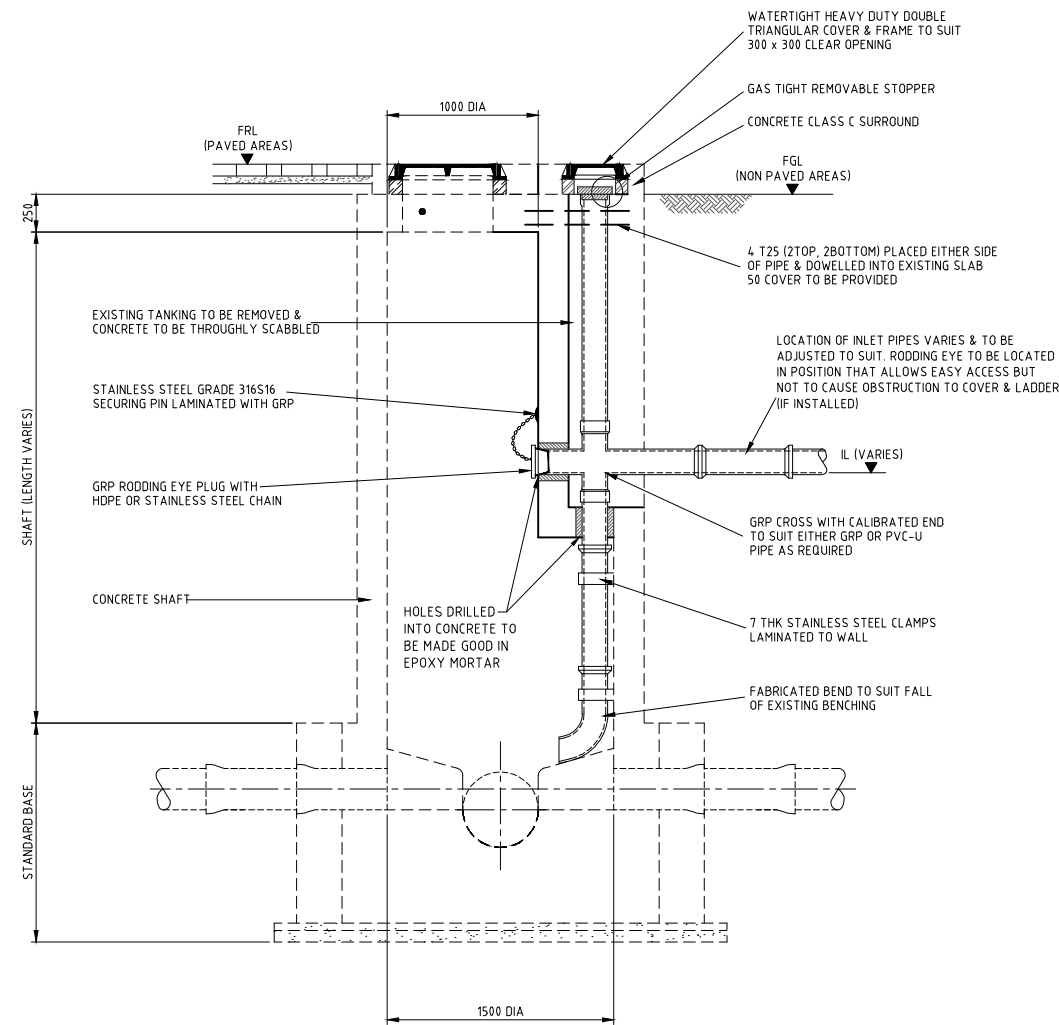


DETAIL FOR EXISTING 1500 DIA SHAFT



DETAIL FOR EXISTING 1500 DIA SHAFT WITH REDUCER SLAB

#### NOTES:

1. ALL DIMENSIONS ARE IN MILLIMETRES UNLESS OTHERWISE STATED.
2. ALL MATERIALS AND WORKMANSHIP SHALL BE IN ACCORDANCE WITH THE CURRENT Q.C.S. UNLESS OTHERWISE AGREED WITH THE ENGINEER.
3. THE DETAILS ON THIS DRAWING ARE GENERAL AND MAY ONLY BE CARRIED OUT WHERE APPLICABLE AS APPROVED BY THE ENGINEER AND DNDD FOR EACH INDIVIDUAL CASE.
4. MANHOLES TO BE WATERTIGHT.
5. ALL EXTERNAL FACES OF CONCRETE BELOW GROUND TO BE TANKED REFER TO DRG No. SD 8-4-103 FOR DETAILS.
6. ALL INTERNAL FACES OF CONCRETE TO BE PROTECTED AS SPECIFIED. SEE DRG No. SD 8-4-106.
7. MAXIMUM OF 2 INTERNAL DROPS PER MANHOLE.

#### LEGEND:

GRP	GLASS REINFORCED PLASTIC
HDPE	HIGH DENSITY POLYETHYLENE
IL	INVERT LEVEL
FRL	FINISHED ROAD LEVEL
FGL	FINISHED GROUND LEVEL

3	APR 19	ISSUED FOR USE	
2	01 MAR 19	REVALIDATED ISSUE	
1	23NOV15	ISSUED FOR USE	
0	15SEP13	ISSUED FOR USE	
Rev.	Date	Revision Details	Appd.

هيئة الأشغال العامة  
Public Works Authority

P.O. Box: 22188  
Tel.: 00974 44950000  
Fax: 00974 44950999

قطر تستحق الأفضل  
Qatar Deserves The Best  
www.ashghal.gov.qa

**PA**  
PROJECTS AFFAIRS

QCS Section:  
Section 8 - Drainage Works  
Part 4 - Pipeline Installation

Drawing Title:  
**INTERNAL BACKDROP  
ON EXISTING MANHOLE**

Approved:	Sheet No: 1 OF 1
Date: APRIL 2019	Scale: 1:25 on A1
Drawing Number: SD 8-4-216	Revision: 3