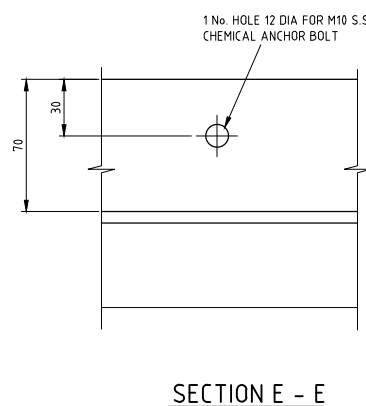
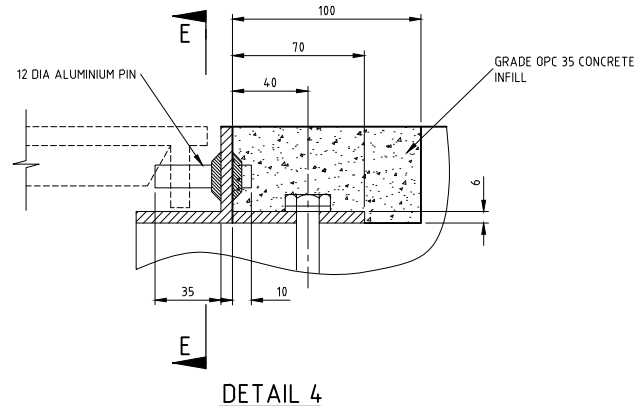
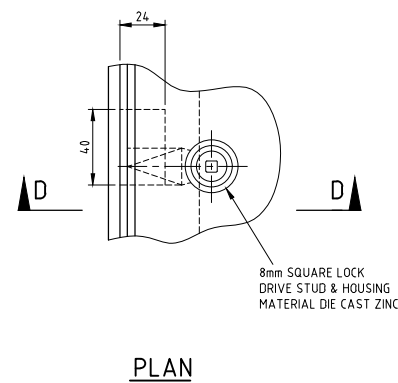
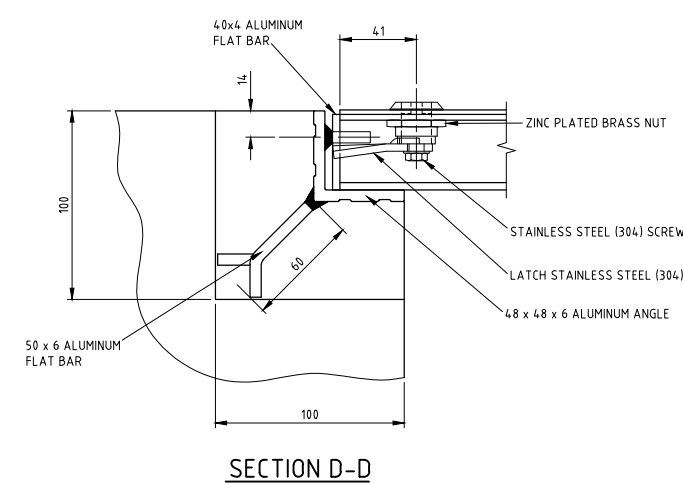


6 ALUMINUM COVER DETAIL
SCALE 1:5

1 LIFTING HANDLE DETAIL
SCALE 1:2

2 ACCESS COVER DETAIL
SCALE 1:2



3 LATCH DETAIL
SCALE 1:2

4 BOLTING STRING DETAIL
SCALE 1:2

- NOTES:**
1. ALL DIMENSIONS ARE IN MILLIMETRES UNLESS OTHERWISE STATED.
 2. ALL MATERIALS AND WORKMANSHIP SHALL BE IN ACCORDANCE WITH THE CURRENT Q.C.S. UNLESS OTHERWISE AGREED WITH THE ENGINEER.
 3. COVERS TO BE TO SECTION 8 PART 6 OF THE SPECIFICATION.
 4. COVERS TO BE OBTAINED FROM AN APPROVED EXPERIENCED MANUFACTURER.
 5. ALUMINUM COVER AND SUPPORTS TO BE DESIGNED FOR NOMINAL LIVE LOADING OF 10 KN/M² AND CAPABLE OF WITHSTANDING 750 kg/m² WITHOUT DEFLECTING MORE THAN 1%, AND WITHOUT DAMAGE OR PERMANENT DEFLECTION.
 6. DISSIMILAR MATERIALS TO BE SEPARATED BY GASKETS.
 7. SEALING TO BE PROVIDED AROUND ENTIRE FRAME BY 33kg DENSITY POLYETHYLENE SEALING STRIP 25mm WIDE.
 8. SURFACE BOXES TO BE PROVIDED AT APPROPRIATE LOCATIONS FOR ACCESS TO VALVE EXTENSION SPINDLES.
 9. ALL STAINLESS STEEL TO BE GRADE 316.
 10. FACES OF THE FRAME WHICH COME INTO CONTACT WITH CEMENT MORTAR OR CONCRETE TO BE PAINTED WITH 2 COATS OF BITUMINOUS PAINT BEFORE INSTALLATION OF THE FRAME.
 11. ALL ALUMINUM GRADE 6063-T6.
 12. ALL STAINLESS STEEL NUTS AND BOLTS TO BE GRADE A4/70 ALL STAINLESS STEEL WASHERS TO BE GRADE A4 (316).
 13. ALL SPINDLE ACCESS COVERS ARE TO BE REMOVABLE TYPE CONNECTED TO STAINLESS STEEL WIRE ROPE.
 14. ALL ACCESS COVERS TO BE SEALED TO MINIMISE THE INGRESS OF WATER INTO THE CHAMBER.

2	APR 19	ISSUED FOR USE	
1	01 MAR 19	REVALIDATED ISSUE	
0	23 NOV 15	ISSUED FOR USE	
Rev.	Date	Revision Details	Appd.
<div> <div> <div>هيئة الأشغال العامة</div> <div>Public Works Authority</div> </div> <div> <div>P.O.Box: 22188</div> <div>Tel.: 00974 44950000</div> <div>Fax: 00974 44950999</div> <div>قطر تستحق الأفضل</div> <div>Qatar Deserves The Best</div> <div>www.ashghal.gov.qa</div> </div> </div>			
<div> <div>PROJECTS AFFAIRS</div> <div>QCS Section:</div> <div>Section 8 - Drainage Works</div> <div>Part 4 - Pipeline Installation</div> </div>			
<div> <div>Drawing Title:</div> <div>SEWAGE RISING MAIN</div> <div>VALVE CHAMBER</div> <div>COVER DETAILS</div> <div>- ALUMINIUM</div> </div>			
Approved:		Sheet No: 1 OF 1	
Date: APRIL 2019		Scale: AS SHOWN	
Drawing Number: SD 8-4-243			Revision: 2