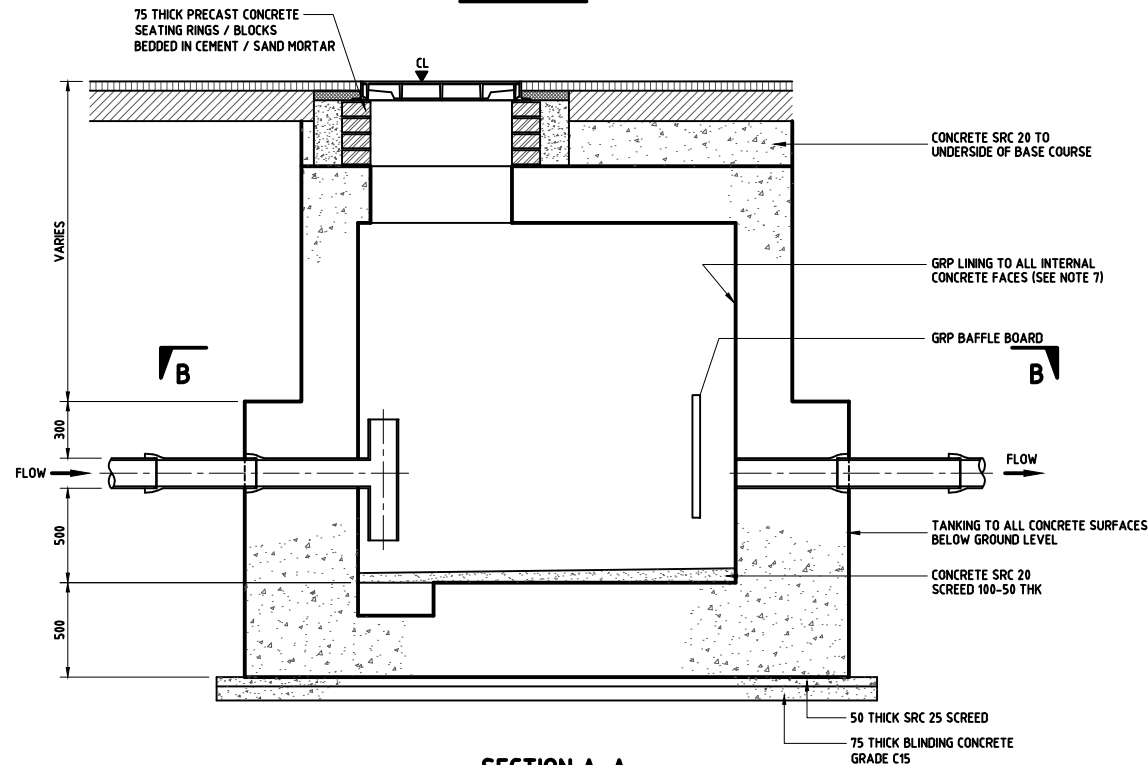
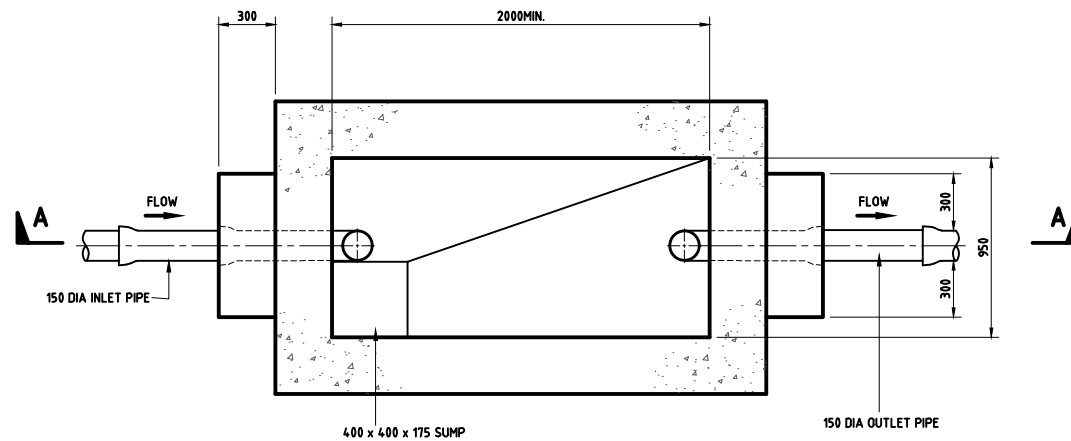


COVER & FRAME TO SUIT 900 x 900 CLEAR
OPENING WITH GRP SEALING PLATE AS
INSTRUCTED BY THE ENGINEER.
CLASS C250 COVER IN OPEN LAND AND
FOOTPATHS, D400 COVER IN CARRIAGEWAY

ROOF PLAN

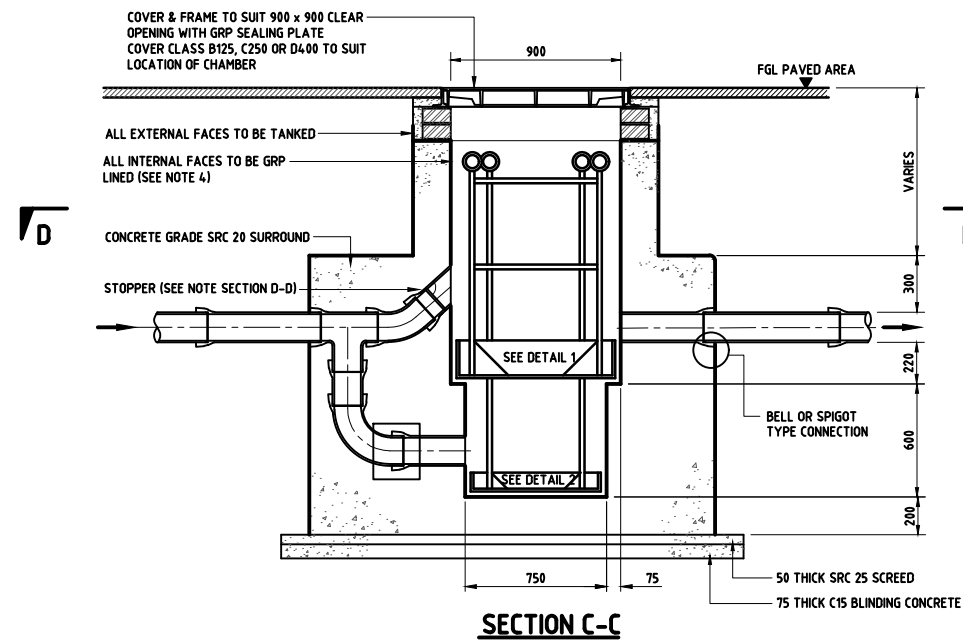


SECTION A-A

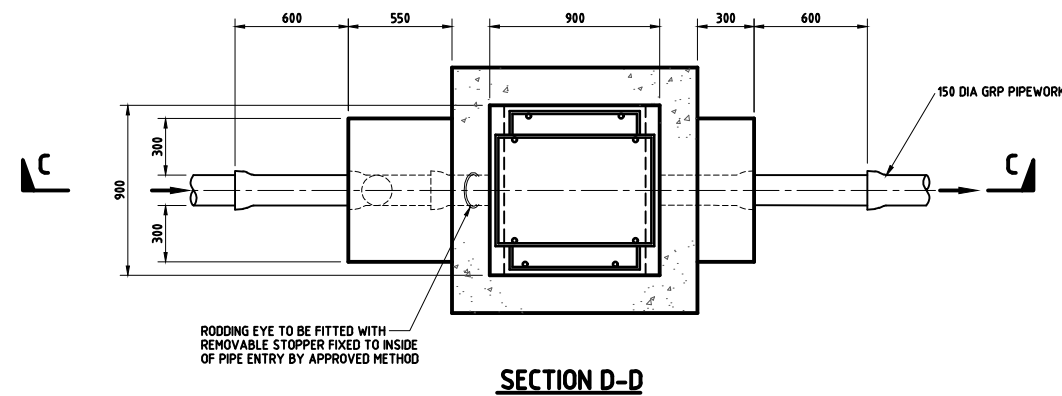


SECTION B-B

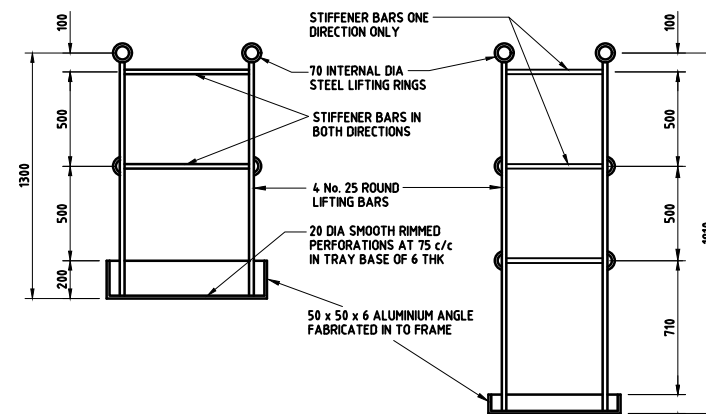
SAND TRAP



SECTION C-C

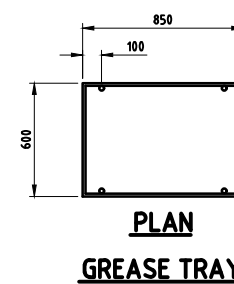


SECTION D-D

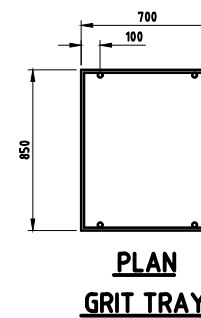


DETAIL 1 PERFORATED GREASE TRAY

TRAYS TO BE FABRICATED IN ALUMINIUM



PLAN GREASE TRAY



PLAN GRIT TRAY

NOTES:

- ALL DIMENSIONS ARE IN MILLIMETRES UNLESS OTHERWISE STATED.
- ALL MATERIALS AND WORKMANSHIP SHALL BE IN ACCORDANCE WITH THE CURRENT Q.C.S. UNLESS OTHERWISE AGREED WITH THE ENGINEER.
- ALL JOINTS BETWEEN PIPEWORK AND CONCRETE ARE TO BE WATERTIGHT.
- RECTANGULAR STRUCTURES TO BE INSITU LAMINATED, SHOULD HAVE MIN. 50mm RADII TO ALL CORNERS
- TRAY FRAMES IN 50 x 50 x 6 ALUMINIUM ANGLE.
- INFILL PANELS TO TRAY FRAMES FROM 6mm ALUMINIUM.
- GRP RIBBED SHEET ASSEMBLED WITH SHUTTERING AND CAST INSITU, JOINTS IN GRP SHEET TO BE LAMINATED LATER.
- ALL CONCRETE TO BE SRC 40 UNLESS OTHERWISE STATED.
- FOR TANKING DETAILS REFER TO DRG No. SD 8-4-103.
- A PRE-FABRICATED GREASE TRAP, DESIRED IN ACCORDANCE WITH BS EN 1825-1 MAY BE PROPOSED AS AN ALTERNATIVE.
- A PRE-FABRICATED SAND TRAP MAY BE PROPOSED AS AN ALTERNATIVE.
- SIZING OF TRAP TO BE SUPPORTED BY ENGINEERING REPORT DESIGN CRITERIA AND CALCULATIONS.

LEGEND:

FGL FINISHED GROUND LEVEL
CL COVER LEVEL

5	OCT 19	ISSUED FOR USE	
4	APR 19	ISSUED FOR USE	
3	01 MAR 19	UPDATED ISSUE	
2	01 MAY 16	ISSUED FOR USE	
1	01 DEC 15	ISSUED FOR USE	
0	15 SEP 13	ISSUED FOR USE	

Rev.	Date	Revision Details	Appd.
------	------	------------------	-------

هيئة الأشغال العامة
Public Works Authority
P.O. Box: 22188
Tel.: 00974 44950000
Fax: 00974 44950999
قطر تستحق الأفضل
Qatar Deserves The Best
www.ashghal.gov.qa

PROJECTS AFFAIRS

QCS Section:
Section 8 - Drainage Works
Part 4 - Pipe Installation

Drawing Title:

SAND TRAP & GREASE TRAP DETAILS

Approved:	Sheet No: 1 OF 1
Date: OCT 2019	Scale: AS SHOWN
Drawing Number: SD 8-4-308	Revision: 5