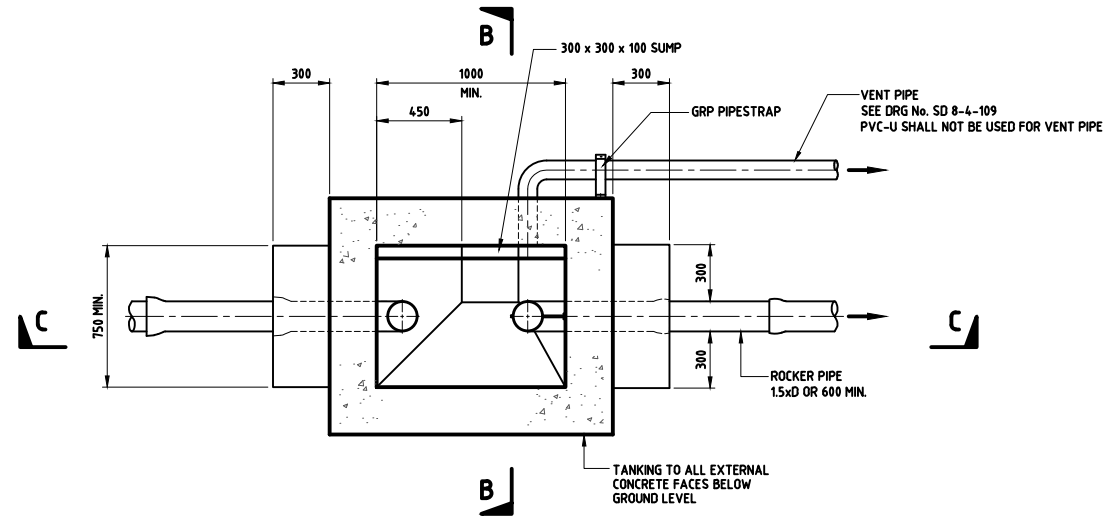
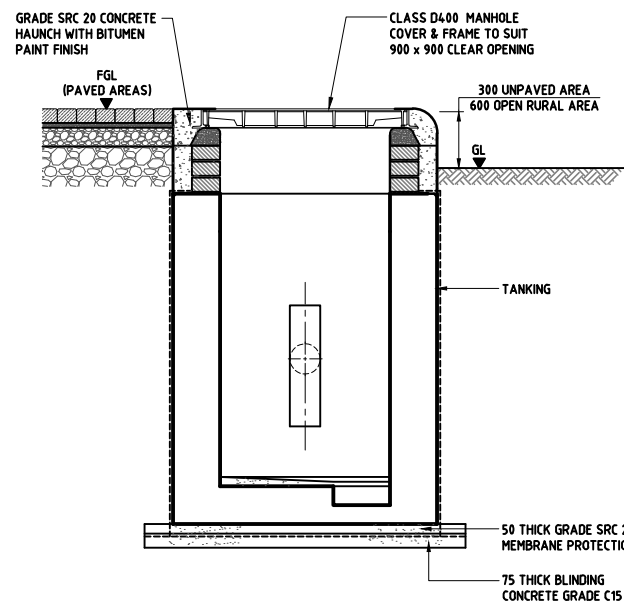


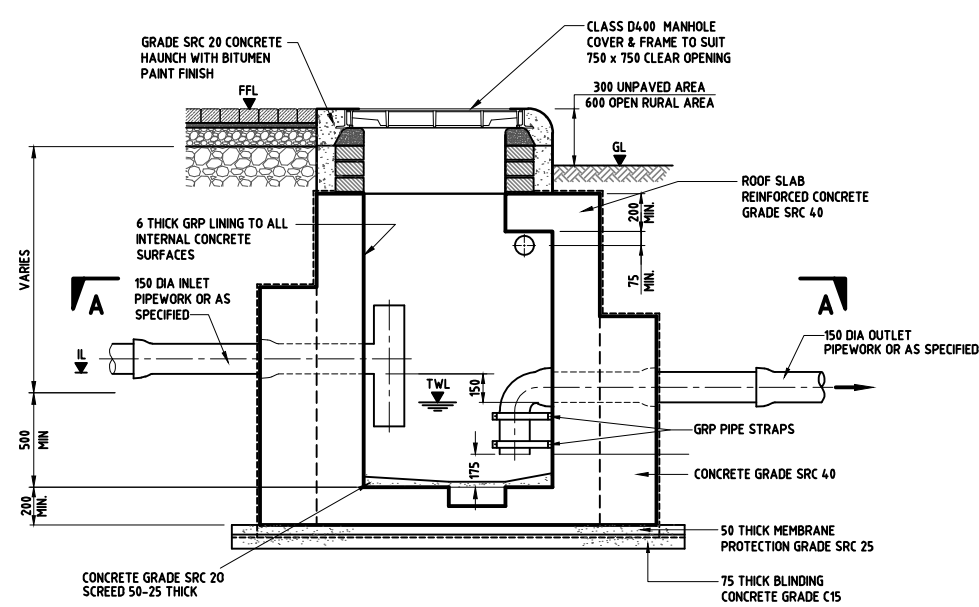
**PLAN AT COVER LEVEL**



**SECTION A-A**



**SECTION B-B**



**SECTION C-C**

**NOTES:**

- ALL DIMENSIONS ARE IN MILLIMETRES UNLESS OTHERWISE STATED.
- ALL MATERIALS AND WORKMANSHIP SHALL BE IN ACCORDANCE WITH THE CURRENT Q.C.S. UNLESS OTHERWISE AGREED WITH THE ENGINEER.
- POSITIONS OF THE INLET AND OUTLET PIPEWORK MAY BE ADJUSTED ON SITE TO SUIT INDIVIDUAL LOCATIONS.
- ALL JOINTS BETWEEN PIPES AND CONCRETE ARE TO BE WATERTIGHT.
- ALL CONCRETE TO BE SRC 40 UNLESS OTHERWISE STATED.
- FOR TANKING DETAILS REFER TO STANDARD DRG No. SD 8-4-103.
- STORAGE VOLUME IN TANK TO BE CALCULATED IN ACCORDANCE WITH REQUIREMENTS OF BS EN 585-1.
- LENGTH OF TANK SHALL BE MINIMUM 3 x WIDTH.
- A PREFABRICATED CLASS 11 PETROL INTERCEPTOR WITH INTEGRAL SLUDGE TRAP BELOW WATER LEVEL TO BS EN 858-1 AND BS EN 858-2 MAY BE PROPOSED AS AN ALTERNATIVE.
- A PRECAST CONCRETE MANHOLES MAY BE USED AS AN ALTERNATIVE. STRUCTURAL DESIGN CALCULATIONS AND SHOP DRAWINGS SHALL BE SUBMITTED FOR APPROVAL BY THE ENGINEER.
- SIZING OF TRAP TO BE SUPPORTED BY ENGINEERING REPORT DESIGN CRITERIA AND CALCULATIONS.

**LEGEND**

FGL	FINISHED GROUND LEVEL
FRL	FINISHED ROAD LEVEL
CL	COVER LEVEL
GRP	GLASS REINFORCED PLASTIC
TWL	TOP OF WATER LEVEL
IL	INVERT LEVEL

5	OCT 19	ISSUED FOR USE	
4	APR 19	ISSUED FOR USE	
3	01 MAR 19	UPDATED ISSUE	
2	04APR16	ISSUED FOR USE	
1	01DEC15	ISSUED FOR USE	
0	15SEP13	ISSUED FOR USE	

Rev.	Date	Revision Details	Appd.

هيئة الأشغال العامة  
Public Works Authority

P.O. Box: 22188  
Tel.: 00974 44950000  
Fax: 00974 44950999  
قطر تستحق الأفضل  
Qatar Deserves The Best  
www.ashghal.gov.qa

PROJECTS AFFAIRS

QCS Section:

Section 8 - Drainage Works

Part 4 - Pipe Installation

Drawing Title:

PETROL INTERCEPTOR  
TYPE 1

Approved: Sheet No: 1 OF 1

Date: OCT 2019 Scale: N.T.S.

Drawing Number: SD 8-4-309 Revision: 5