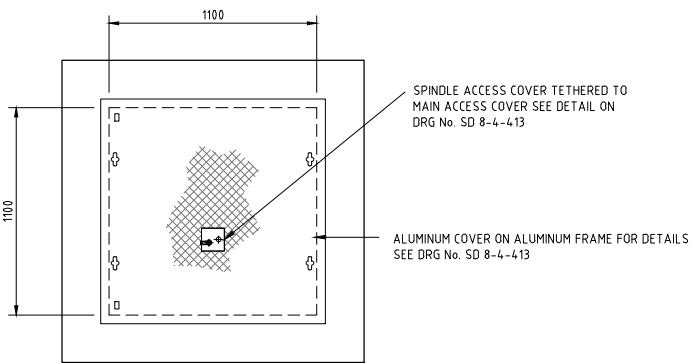
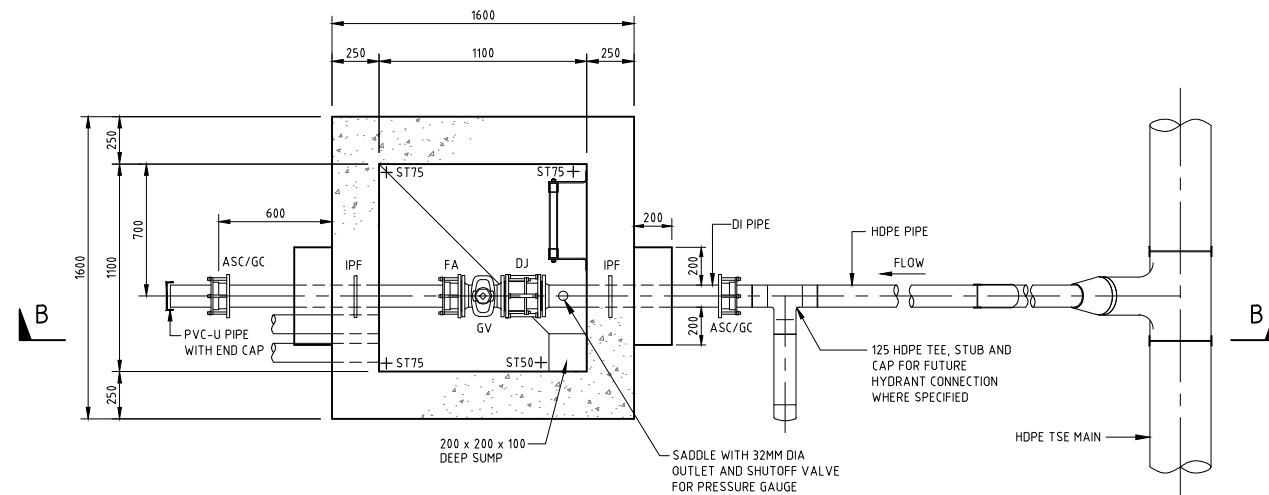


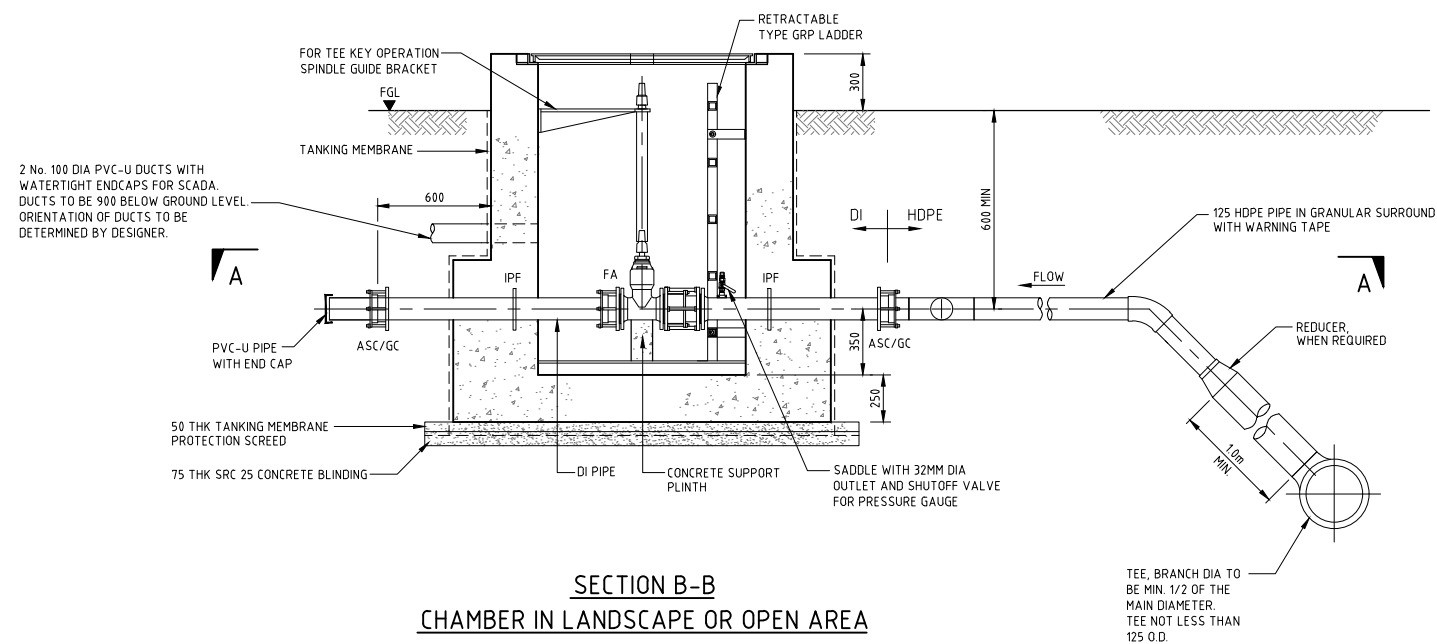
ALL CHAMBERS SHALL BE LOCATED OUT OF CARRIAGEWAY IN ACCESSIBLE AREA.



PLAN ON COVER SLAB



SECTION A - A



SECTION B-B
CHAMBER IN LANDSCAPE OR OPEN AREA

NOTES:

1. ALL DIMENSIONS ARE IN MILLIMETRES UNLESS OTHERWISE STATED.
2. ALL MATERIALS AND WORKSMANSHIP SHALL BE IN ACCORDANCE WITH THE CURRENT C & S UNLESS OTHERWISE AGREED WITH THE ENGINEER.
3. ALL JOINTS BETWEEN CONCRETE AND PIPES SHALL BE WATERTIGHT.
4. ALL EXTERNAL FACES TO BE TANKED IN ACCORDANCE WITH SPECIFICATION FOR TANKING DETAILS SEE DRG NO. SD 8-4-103.
5. ALL INTERNAL SURFACES ARE TO BE COATED AS SPECIFIED IN QCS, USING PAINT COLOUR 00A05 TO BS 4800.
6. ALL DUCTILE IRON PIPEWORK TO BE WRAPPED IN ACCORDANCE WITH THE SPECIFICATION.
7. ALL STRUCTURAL CONCRETE SHALL BE MINIMUM GRADE SRC 4.0 UNLESS OTHERWISE NOTED.
8. SEE DRG NO SD 8-4-106 FOR STRUCTURAL NOTES.
9. 7mm NEOPRENE PAD SHALL BE PLACED BETWEEN ALL VALVES AND CONCRETE SUPPORT PLINTHS.
10. ALL PIPES, VALVES AND FITTINGS WITHIN CHAMBERS SHALL BE DUCTILE IRON, SUITABLE FLEXIBLE COUPLINGS SHALL BE USED TO CONNECT TEE MAINS TO THESE DUCTILE IRON PIPES.
11. VALVE SPINDLES TO BE EXTENDED TO 100 BELOW COVER LEVEL FOR TEE KEY OPERATION. SUPPORT BRACKET FOR SPINDLES TO BE PROVIDED WHEN NECESSARY. VALVE SPINDLE EXTENSIONS ARE NOT REQUIRED WHEN DEPTH TO TOP OF VALVE FROM COVER IS LESS THAN 500.
12. THE CONTRACTOR SHALL PROVIDE THE PIPE SCHEDULE OF FITTINGS FOR THE STRUCTURE PRIOR TO PLACEMENT OF THE ORDER.
13. GATE OR BUTTERFLY VALVES SHALL BE RATED FOR 16 BARs. BUTTERFLY VALVES TO BE USED ON PIPE ABOVE 300.
14. CONCRETE COVER SLAB WITH HEAVY DUTY DI COVER TO BE USED WHEN CHAMBER IS SUBJECT TO VEHICLE TRAFFIC. SEE DRG NO. SD 8-4-44.
15. CHAMBER SCHEDULE BASED ON EQUAL MAIN DIAMETERS IN CHAMBER. ALL OTHER CHAMBER COMBINATIONS TO BE DESIGNED BASED ON INDIVIDUAL CASES.
16. PROVIDE A MINIMUM CLEARANCE OF 300 BETWEEN CHAMBER WALLS AND OUTER FACE OF FLANGE, OR VALVES FOR PIPES LESS THAN 600 DIA. AND 600 CLEARANCE FOR PIPE SIZES 600 DIA AND GREATER.
17. ALL BURIED FLEXIBLE COUPLINGS, FLANGED ADAPTORS AND OTHER FERROUS FITTINGS TO BE PROTECTED WITH MASTIC FILLER, PLASTIC TAPE AND LAMINATED TAPE AS PER QCS.
18. ROCKER PIPE LENGTHS TO BE 600 OR 1.5 x DIAMETER WHICHEVER IS THE GREATER.
19. CHAMBER SCHEDULES ARE BASED ON DI FITTINGS FROM BS EN 545:2010.
20. RETRACTABLE TYPE GRP LADDER WITH SAFETY CAGE IF THE CHAMBER DEPTH IS MORE THAN 3.5 METERS.
21. CHAMBERS WITH ALUMINUM FRAME & COVERS AND ARE LEVELLED ABOVE FINISHED GROUND LEVEL SHALL HAVE ALUMINUM FLASHING OF THE WATER PROOF MEMBRANE AND PROTECTION BOARD.
22. PROVISION FOR PRESSURE GAUGE SHALL BE MADE IN THE CHAMBERS.

LEGEND:

DJ	DISMANTLING JOINT
IPF	INTEGRAL PUDDLE FLANGE
GV	GATE VALVE
DI	DUCTILE IRON
PVC-U	POLYVINYL CHLORIDE - UNPLASTICISED
HDPE	HIGH DENSITY POLYETHYLENE
FGL	FINISHED GROUND LEVEL
SFA	STUB FLANGE ASSEMBLY (MAXIMUM 8 BAR WORKING PRESSURE)
FA	FLANGE ADAPTOR
ASC	ANCHORED STEPPED COUPLING
GC	GRIP COUPLER

5	SEP 19	ISSUED FOR USE	
4	APR 19	ISSUED FOR USE	
3	01 MAR 19	UPDATED ISSUE	
2	11JAN16	ISSUED FOR USE	
1	22JUN15	ISSUED FOR USE	
0	15SEP13	ISSUED FOR USE	
Rev.	Date	Revision Details	Appd.

هيئة الأشغال العامة
Public Works Authority

P.O.Box: 22188
Tel.: 00374 44950000
Fax: 00374 44950999

PA

قطر تستحق الأفضل
Qatar Deserves The Best

www.ashghal.gov.qa

QCS Section: Section 8 - Drainage Works
Part 4 - Pipeline Installation

Drawing Title:

TSE
DISTRIBUTION VALVE
CHAMBER
(ONE VALVE) - HDPE

Approved:	Sheet No:	1 OF 1
Date:	Scale:	1:20 ON A1
Drawing Number:		Revision:
SD 8-4-405		5