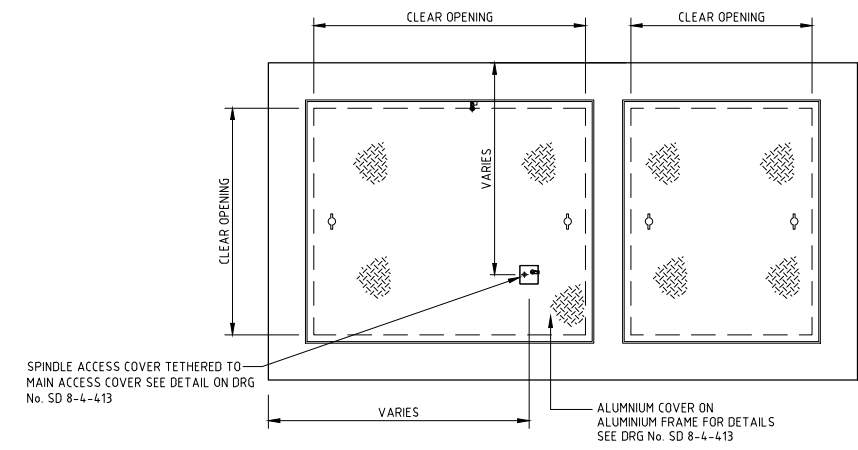
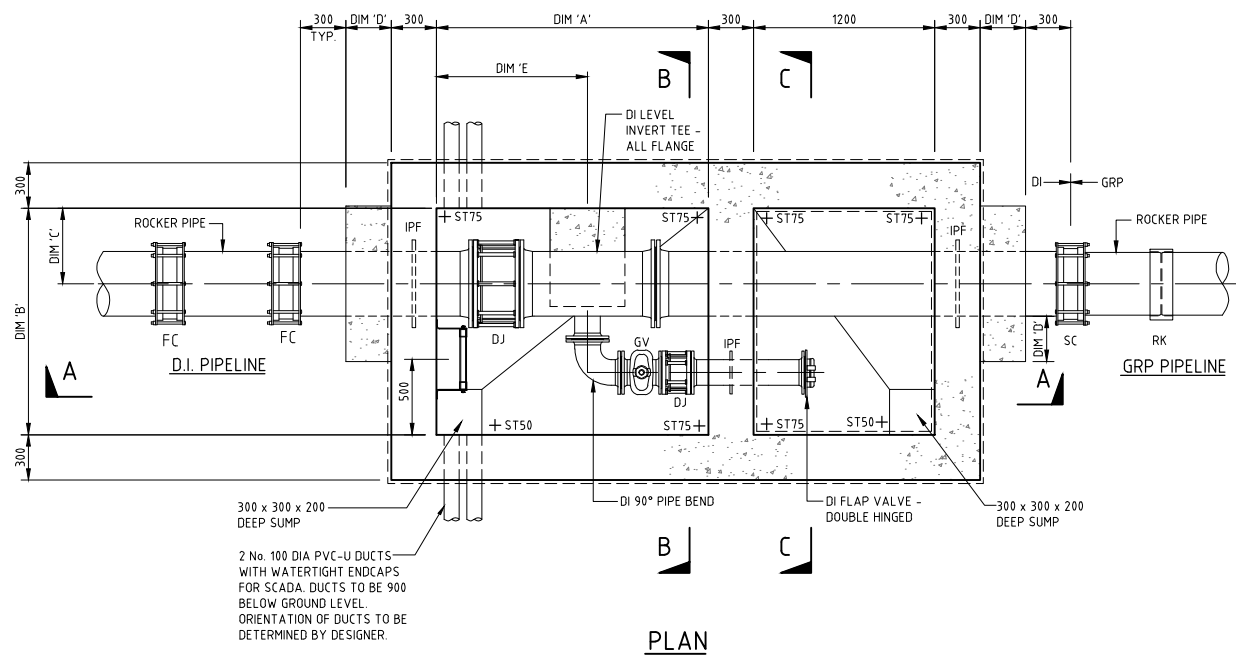


ALL CHAMBERS SHALL BE LOCATED OUT OF CARRIAGEWAY IN ACCESSIBLE AREA.



PLAN

PLAN AT COVER LEVEL

PIPE DIA O.D.	DI FITTINGS	DIM 'A'	DIM 'B'	DIM 'C'	DIM 'D'	WASHOUT DIA
125	100	1600	2200	450	705	80
180	150	1600	2200	450	750	80
250	200	1700	2400	500	850	100
315	250	1800	2400	500	950	100
355	300	1900	2800	550	1000	150

PIPE DIA I.D.	DIM 'A'	DIM 'B'	DIM 'C'	DIM 'D'	DIM 'E'	WASHOUT DIA
300	1900	1900	550	300	900	150
400	2100	2000	600	300	1050	150
500	2200	2200	700	300	1100	200
600	2200	2500	950	500	1150	200
800	2000	2700	1050	500	950	200
900	2100	2800	1100	500	1000	200
1000	2100	2900	1150	500	1000	200
1200	2100	3000	1250	500	1050	200

- NOTES:**
- ALL DIMENSIONS ARE IN MILLIMETRES UNLESS OTHERWISE STATED.
 - ALL MATERIALS AND WORKMANSHIP SHALL BE IN ACCORDANCE WITH THE CURRENT Q.C.S. UNLESS OTHERWISE AGREED WITH THE ENGINEER.
 - ALL JOINTS BETWEEN CONCRETE AND PIPES SHALL BE WATERTIGHT.
 - ALL EXTERNAL FACES TO BE TANKED IN ACCORDANCE WITH SPECIFICATION FOR TANKING DETAILS SEE DRG No. SD 8-4-103.
 - ALL INTERNAL SURFACES ARE TO BE COATED AS SPECIFIED IN QCS, USING PAINT COLOUR 00A05 TO BS 4800.
 - ALL DUCTILE IRON PIPEWORK TO BE WRAPPED IN ACCORDANCE WITH THE SPECIFICATION.
 - ALL STRUCTURAL CONCRETE SHALL BE MINIMUM GRADE SRC 40 UNLESS OTHERWISE NOTED.
 - SEE DRG No SD 8-4-106 FOR STRUCTURAL NOTES.
 - 7mm NEOPRENE PAD SHALL BE PLACED BETWEEN ALL VALVES AND CONCRETE SUPPORT PLINTHS.
 - ALL PIPES, VALVES AND FITTINGS WITHIN CHAMBERS SHALL BE DUCTILE IRON. SUITABLE FLEXIBLE COUPLINGS SHALL BE USED TO CONNECT TSE MAINS TO THESE DUCTILE IRON PIPES.
 - VALVE SPINDLES TO BE EXTENDED TO 100 BELOW COVER LEVEL FOR TEE KEY OPERATION. SUPPORT BRACKET FOR SPINDLES TO BE PROVIDED WHEN NECESSARY. VALVE SPINDLE EXTENSIONS ARE NOT REQUIRED WHEN DEPTH TO TOP OF VALVE FROM COVER IS LESS THAN 500.
 - THE CONTRACTOR SHALL PROVIDE THE PIPE SCHEDULE OF FITTINGS FOR THE STRUCTURE PRIOR TO PLACEMENT OF THE ORDER.
 - GATE OR BUTTERFLY VALVES SHALL BE RATED FOR 16 BARS. BUTTERFLY VALVES TO BE USED ON PIPE ABOVE 300.
 - CONCRETE COVER SLAB WITH HEAVY DUTY D.I. COVER TO BE USED WHEN CHAMBER IS SUBJECT TO VEHICLE TRAFFIC. SEE DRG No. SD 8-4-414.
 - CHAMBER SCHEDULE BASED ON EQUAL MAIN DIAMETERS IN CHAMBER. ALL OTHER CHAMBER COMBINATIONS TO BE DESIGNED BASED ON INDIVIDUAL CASES.
 - PROVIDE A MINIMUM CLEARANCE OF 300 BETWEEN CHAMBER WALLS AND OUTER FACE OF FLANGE, OR VALVES FOR PIPES LESS THAN 600 DIA. AND 600 CLEARANCE FOR PIPE SIZES 600 DIA AND GREATER.
 - ALL BURIED FLEXIBLE COUPLINGS, FLANGED ADAPTORS AND OTHER FERROUS FITTINGS TO BE PROTECTED WITH MASTIC FILLER, MASTIC TAPE AND LAMINATED TAPE AS PER QCS.
 - ROCKER PIPE LENGTHS TO BE 600 OR 1.5 x DIAMETER WHICHEVER IS THE GREATER.
 - CHAMBER SCHEDULES ARE BASED ON DI FITTINGS FROM BS EN 545 2010.
 - THIS DETAIL MAY BE USED WHEN NO CONNECTION TO A PUBLIC STORM DRAIN IS AVAILABLE AND NO SPACE IS AVAILABLE FOR AN OFF-LINE WASHOUT SUMP AS SD 8-4-409.
 - RETRACTABLE TYPE GRP LADDER WITH SAFETY CAGE IF THE CHAMBER DEPTH IS MORE THAN 3.5 METERS.
 - CHAMBERS WITH ALUMINIUM FRAME & COVERS AND ARE LEVELLED ABOVE FINISHED GROUND LEVEL SHALL HAVE ALUMINIUM FLASHING OF THE WATER PROOF MEMBRANE AND PROTECTION BOARD.

- LEGEND:**
- IPF INTEGRAL PUDDLE FLANGE
 - GV GATE VALVE
 - DI DUCTILE IRON
 - ST SCREED THICKNESS
 - C/W COMPLETE WITH
 - FGL FINISHED GROUND LEVEL
 - DJ DISMANTLING JOINT
 - FC D.I. FLEXIBLE COUPLERS
 - RK GRP REKA COUPLING
 - SC STEPPED COUPLING

Rev.	Date	Revision Details	Appd.
6	SEP 19	ISSUED FOR USE	
5	APR 19	ISSUED FOR USE	
4	01 MAR 19	UPDATED ISSUE	
3	31 MAR 16	ISSUED FOR USE	
2	06 JAN 16	ISSUED FOR USE	
1	30 JUN 15	ISSUED FOR USE	
0	15 SEP 13	ISSUED FOR USE	

هيئة الأشغال العامة
Public Works Authority

P.O. Box: 22188
Tel.: 00974 44950000
Fax: 00974 44950999

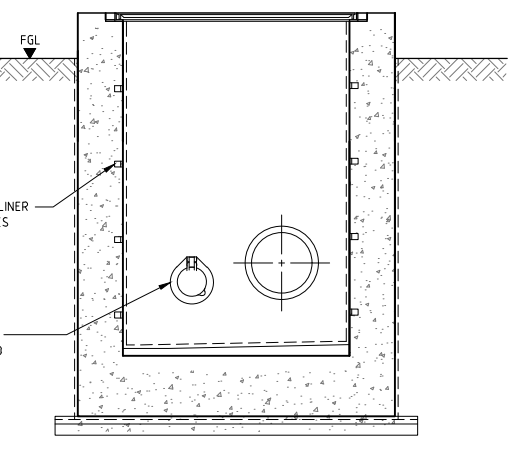
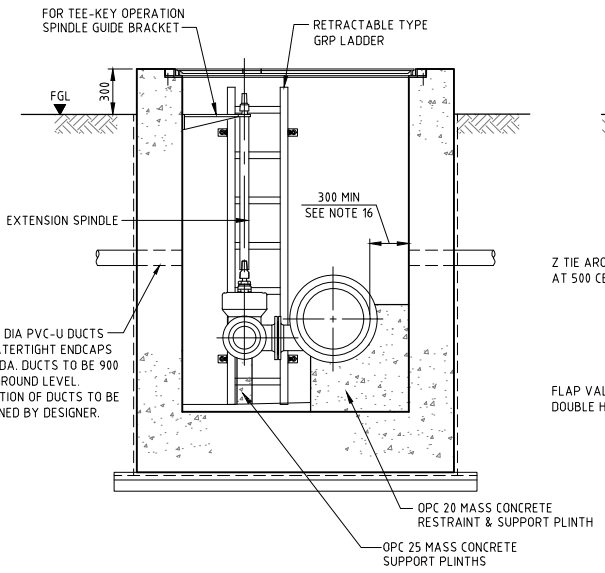
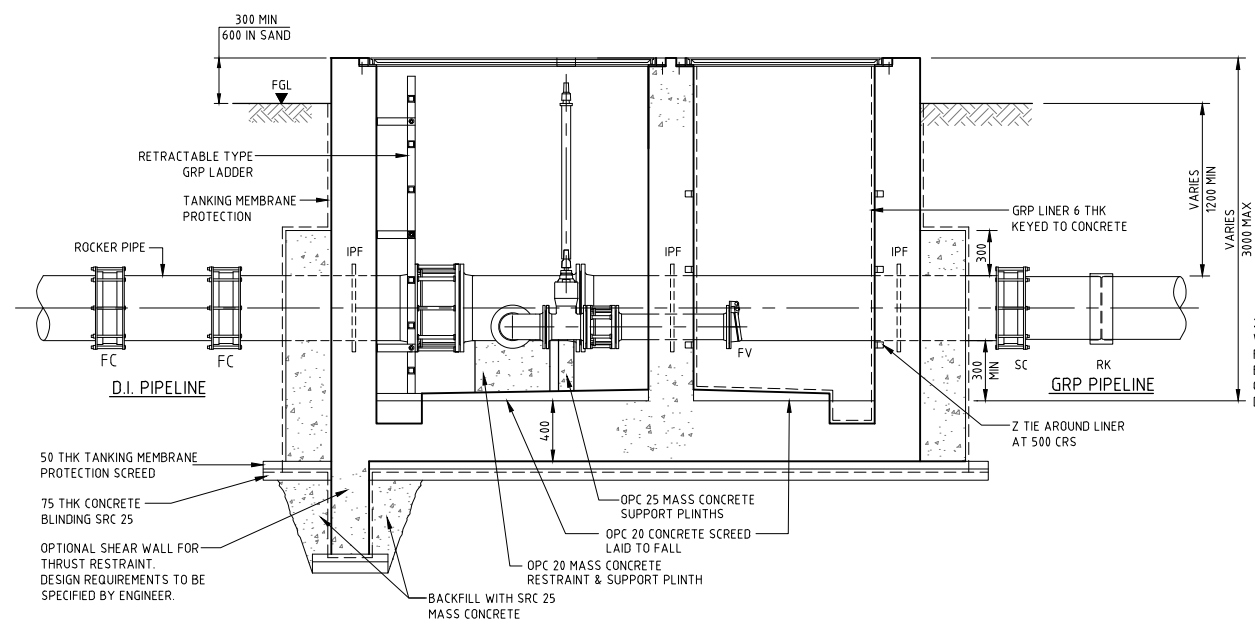
قطر تستحق الأفضل
Qatar Deserves The Best

PA
PROJECTS AFFAIRS
www.ashghal.gov.qa

QCS Section:
Section 8 - Drainage Works
Part 4 - Pipeline Installation

Drawing Title:
TSE ON-LINE WASHOUT CHAMBER

Approved:	Sheet No: 1 OF 1
Date: APRIL 2019	Scale: 1:25 ON A1
Drawing Number: SD 8-4-410	Revision: 6



SECTION A-A

SECTION B-B

SECTION C-C

400mm DIA PIPELINE SHOWN