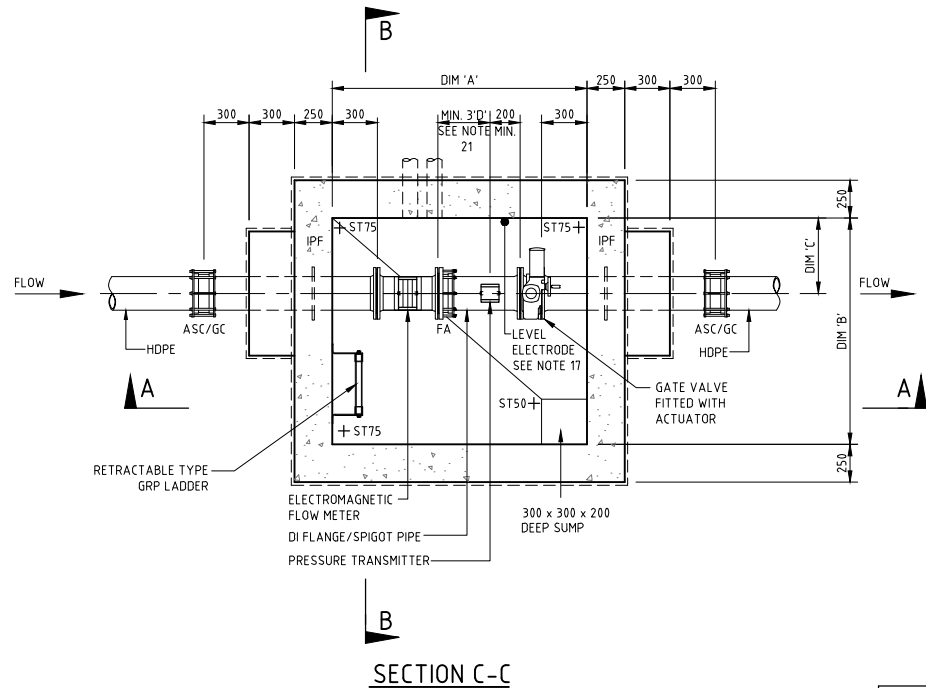
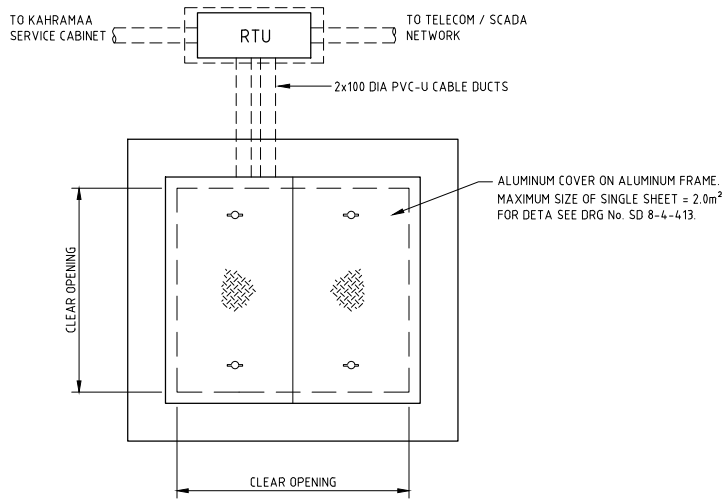


ALL CHAMBERS SHALL BE LOCATED OUT OF CARRIAGEWAY IN ACCESSIBLE AREA.

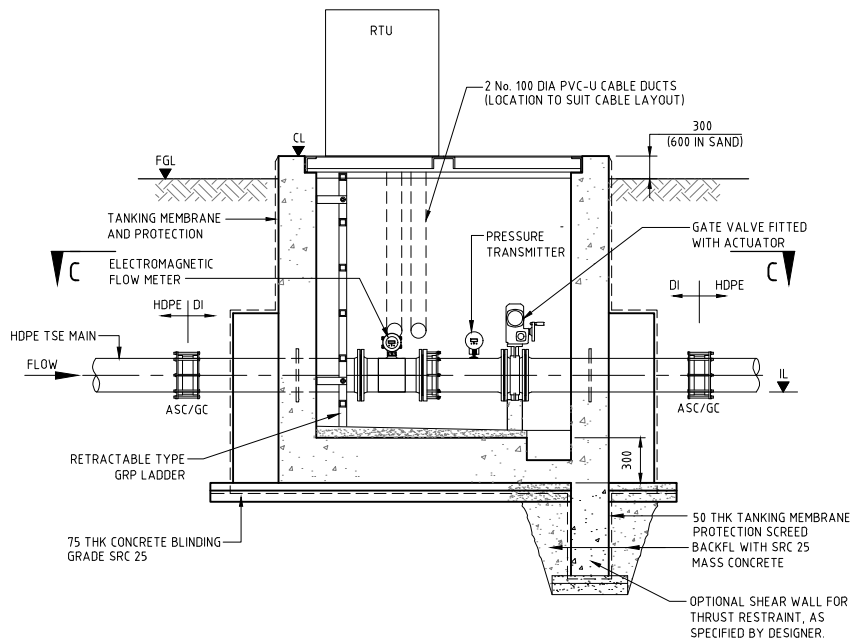


FLOW METER CHAMBER SCHEDULE - HDPE				
PIPE DIA O.D.	DI FITTINGS 'D'	DIM 'A'	DIM 'B'	DIM 'C'
125	100	1600	1300	450
180	150	1900	1300	450
250	200	2100	1400	500
315	250	2400	1400	500
355	300	2600	1500	550

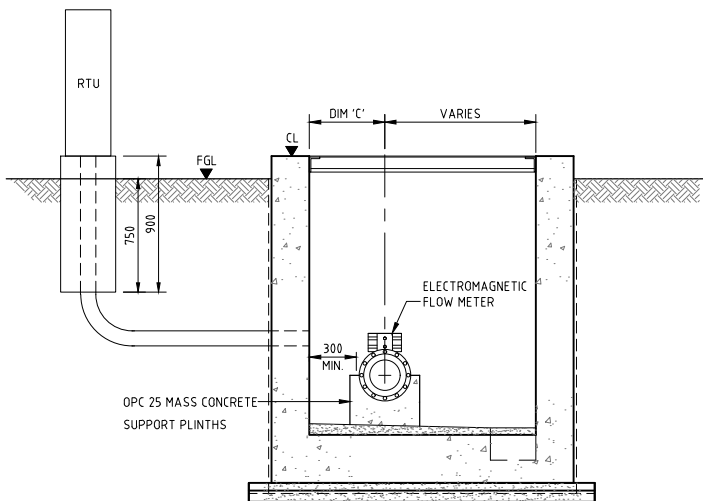
PIPE FITTING SCHEDULE



PLAN AT COVER LEVEL



SECTION A-A



SECTION B-B

- NOTES:**
- ALL DIMENSIONS ARE IN MILLIMETRES UNLESS OTHERWISE STATED.
 - ALL MATERIALS AND WORKMANSHIP SHALL BE IN ACCORDANCE WITH THE CURRENT Q.C.S. UNLESS OTHERWISE AGREED WITH THE ENGINEER.
 - ALL JOINTS BETWEEN CONCRETE AND PIPES SHALL BE WATERTIGHT.
 - ALL EXTERNAL FACES TO BE TANKED IN ACCORDANCE WITH SPECIFICATION AND STANDARD DETAS.
 - ALL INTERNAL SURFACES ARE TO BE COATED AS SPECIFIED IN QCS, USING PAINT COLOUR 00A05 TO BS 4800.
 - ALL DUCTE IRON PIPEWORK TO BE WRAPPED IN ACCORDANCE WITH THE SPECIFICATION.
 - ALL REINFORCED CONCRETE SHALL BE GRADE SRC 40 MIX UNLESS NOTED OTHERWISE.
 - SEE DRG No. SD 8-4-106 FOR STRUCTURAL NOTES.
 - CHAMBERS LOCATED IN PAVED AREAS SUBJECT TO VEHICLE LOADING TO BE CONSTRUCTED WITH DUCTE IRON COVERS, GRADE D400.
 - ALL FLOW MONITORING AND CONTROL EQUIPMENT TO BE ACCORDING TO THE REQUIREMENTS (QCS SECTIONS 8.9 AND 10), WITH REMOTE COMMUNICATIONS COMPATIBILITY. FLOW METER SHALL IDENTIFY FORWARD REVERSE AND NET TOTAL.
 - 7mm NEOPRENE PAD TO BE PLACED BETWEEN ALL VALVES AND CONCRETE PLINTH SUPPORT.
 - FOR SUPPLY LINES LARGER THAN 300 DN, UTILIZE TWO SEPARATE VALVE CHAMBERS, SEE DRG No. SD 8-4-401 & SD 8-4-418.
 - CHAMBER SCHEDULE BASED ON DI FITTINGS FROM BS EN 545:2010.
 - FOR SCADA AND RTU CABINET DETAS SEE SD 8-4-418.
 - LOCATION OF SERVICE CABINET IS INDICATIVE ONLY. THE CONTRACTOR SHALL CONFIRM THE EXACT LOCATION WITH CUSTOMER SERVICES OF KAHRAMAA AND ENGINEER.
 - SEE DRG No. SD 8-4-419 FOR TSE SAMPLING POINT DETA.
 - LEVEL ELECTRODE FIXED TO CHAMBER WALL. ALARM LEVEL = ST+175 TO BE CONFIRMED DURING DESIGN.
 - RTU CIRCUITRY AND ESTABLISHING SCADA CONNECTIONS BY OTHERS.
 - CONTRACTOR IS RESPONSIBLE FOR GENERATING THE SHOP / AS BUT DRAWINGS BASED ON THE AGREED CHANGES DURING CONSTRUCTION AND THE ACTUAL SITE CONDITIONS.
 - THIS LAYOUT IS FOR GUIDANCE ONLY. THE LAYOUT MAY BE MODIFIED TO SUIT SITE CONDITIONS DURING CONSTRUCTION AS AGREED WITH THE ENGINEER.
 - MINIMUM LENGTH OF STRAIGHT PIPEWORK UPSTREAM AND DOWNSTREAM OF FLOWMETER SHALL BE AS PER MANUFACTURER'S RECOMMENDATIONS.
 - RETRACTABLE TYPE GRP LADDER WITH SAFETY CAGE IF THE CHAMBER DEPTH IS MORE THAN 3.5 METERS.
 - CHAMBERS WITH ALUMINUM FRAME & COVERS AND ARE LEVELED ABOVE FINISHED GROUND LEVEL SHALL HAVE ALUMINUM FLASHING OF THE WATER PROOF MEMBRANE AND PROTECTION BOARD.

LEGEND:

ASC	ANCHORED STEPPED COUPLING
CL	COVER LEVEL
DN	DIAMETER NOMINAL
DI	DUCTE IRON
FA	FLANGE ADAPTOR
FGL	FINISHED GROUND LEVEL
GRP	GLASS REINFORCED POLYESTER
HDPE	HIGH DENSITY POLYETHYLENE
IPF	INTEGRAL PUDDLE FLANGE
INVERT	INVERT LEVEL
OPC	ORDINARY PORTLAND CEMENT
RTU	REMOTE TERMINAL UNIT
ST	SCREED THICKNESS
SRC	SULFATE RESISTING CEMENT
PVC-U	POLYVINYL CHLORIDE UNPLASTICIZED
GC	GRIP COUPLER

6	SEP 19	ISSUED FOR USE	
5	APR 19	ISSUED FOR USE	
4	01 MAR 19	UPDATED ISSUE	
3	16SEP15	ISSUED FOR USE	
2	23JUN15	ISSUED FOR USE	
1	18JAN15	ISSUED FOR REVIEW	
0	15SEP13	ISSUED FOR USE	

Rev.	Date	Revision Details	Appd.
------	------	------------------	-------

هيئة الأشغال العامة
Public Works Authority

P.O.Box: 22188
Tel.: 00974 44950000
Fax: 00974 44950999

قطر تستحق الأفضل
Qatar Deserves The Best
www.ashghal.gov.qa

PROJECTS AFFAIRS

QCS Section:
Section 8 - Drainage Works
Part 4 - Pipeline Installation

Drawing Title:

TSE
VALVE AND FLOW METER
CHAMBER
DN 300 OR LESS

Approved:	Sheet No: 1 OF 1
Date: APR 2019	Scale: 1:25 on A1
Drawing Number: SD 8-4-417	Revision: 6